

CUSHING - HATHERLY ELEMENTARY SCHOOL PROJECT



Scituate Public Schools



NEIGHBORHOOD UPDATE

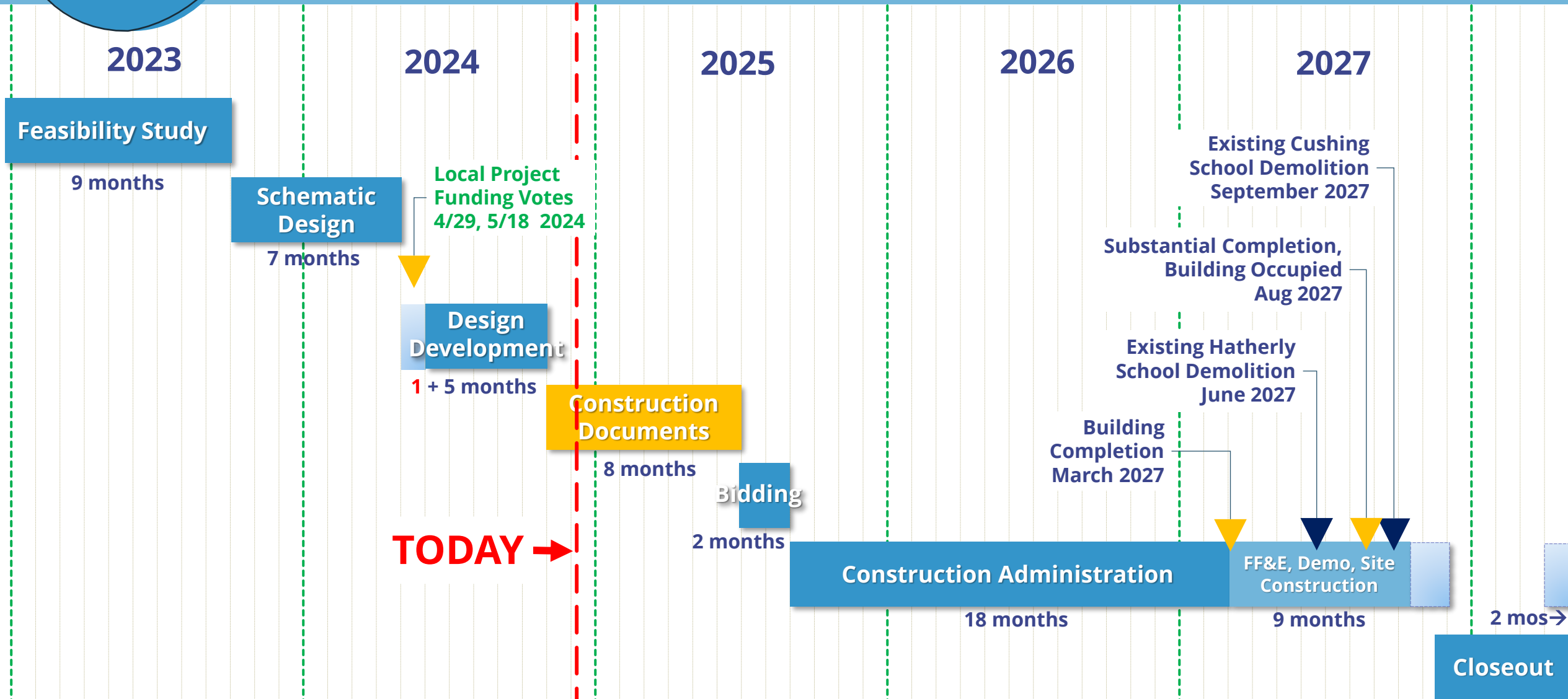
December 18, 2024

Agenda

12/18/24 – Neighborhood Update

- Project Schedule Update
- Budget Update
- Design Process Update
- Summary of Design Updates since Schematic Design Phase

Overall Project Schedule





DD PHASE COST ESTIMATE SUMMARY

The Project is On-Budget

Project Budget Remains \$119.4 Million

All design scope accounted for, including:

- Ann Vinal Road sewer force main replacement & connections
- Site Plan Revisions
- Energy Code Compliance Measures
- Cushing School Abatement, Demolition, Site Leveling

Possible Add-Alternates:

- Flannery Field – Artificial Turf in lieu of Natural Grass
- Terrazzo Floors at Main Public Spaces in lieu of Linoleum

Design Process: Listening to a wide variety of voices



- User Group Meetings (faculty & staff)
- School Building Committee
- SBC Working Group
- Sustainability/Mechanical Working Group
- Playground Working Group
- Safety and Security Working Group
- Librarian Review of Media Center
- Regulatory Meetings: Planning, Conservation Commission, Code Review



LANDSCAPE DD PHASE SITE PLAN

CHANGES SINCE SCHEMATIC DESIGN:

- “Flipped” playground and parking/ drop-off loop
- Added 17 parking spaces: 130 →147
- East drive realigned and retaining wall added to preserve trees and provide more buffer with neighbors
- Added second one-way bus-only entry drive, reconfigured main entry drive alignment, and added second exit lane
- Stormwater basins reconfigured



Aerial View Looking West

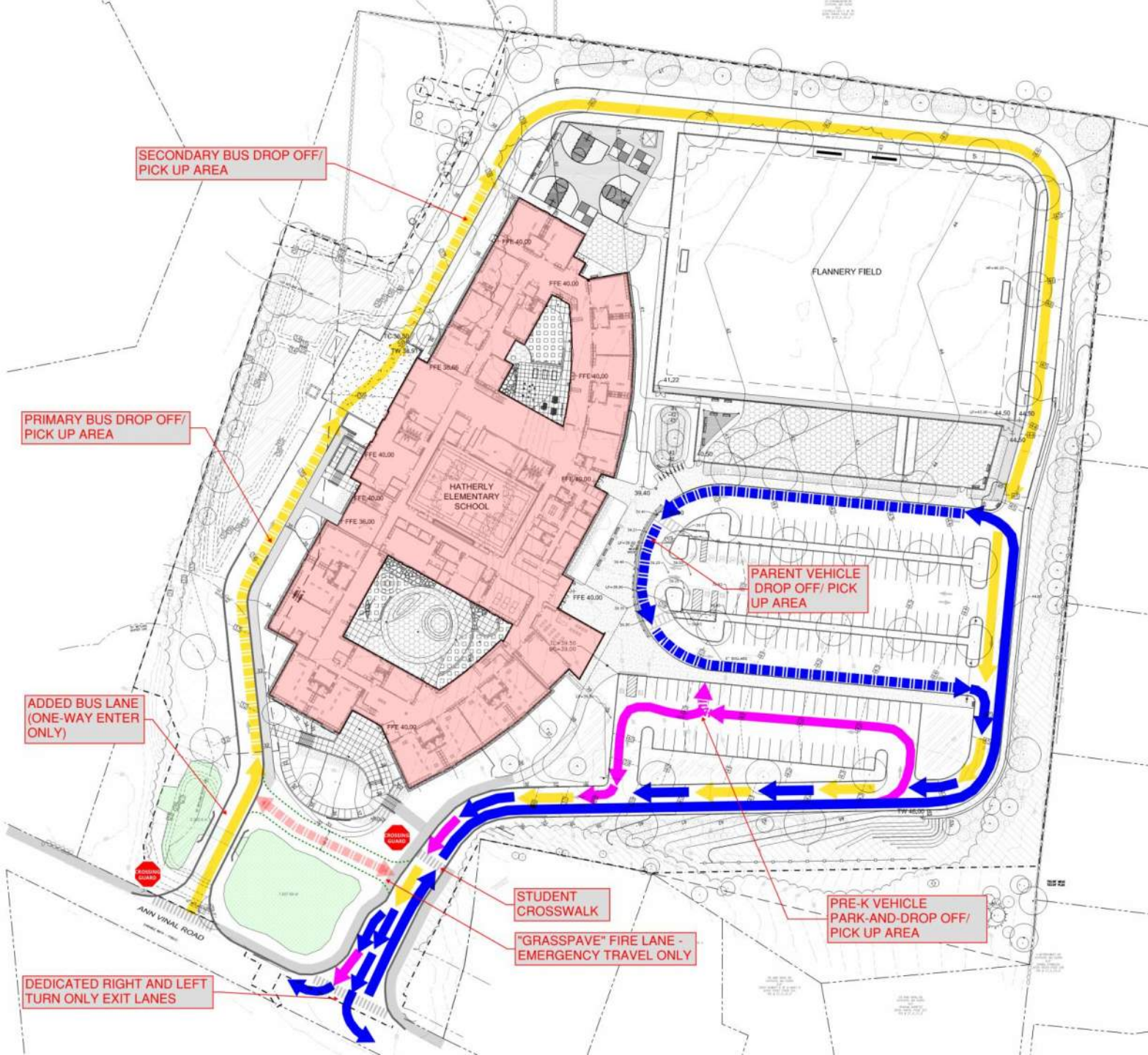


CIVIL / TRAFFIC DESIGN

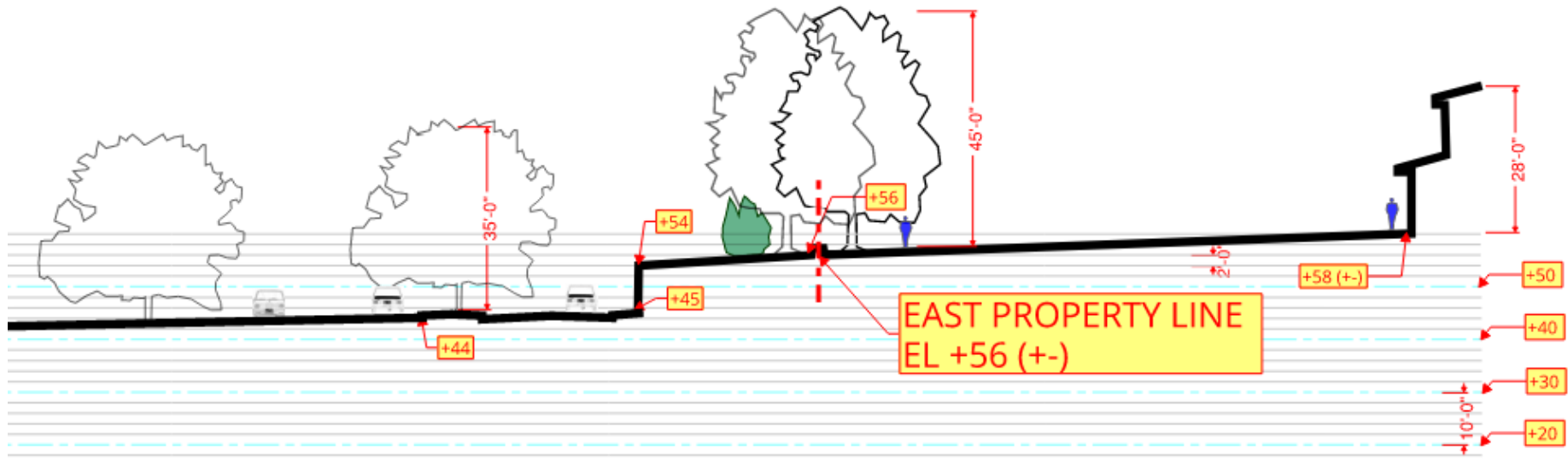
Alternate Site Access

PROPOSED CHANGES:

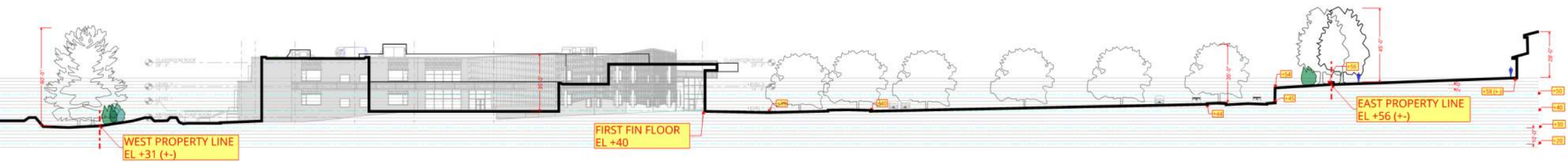
- Added one-way Bus-only entrance
- Shifted main entrance east to maximize stormwater infiltration area
- Added second exit lane at main entrance
- Secondary bioretention area planned next to wetland buffer zone, linked under drive via box culvert
- Maintaining Fire Dept access via "Grasspave" driveway



LANDSCAPE DD PHASE SITE CROSS- SECTIONS

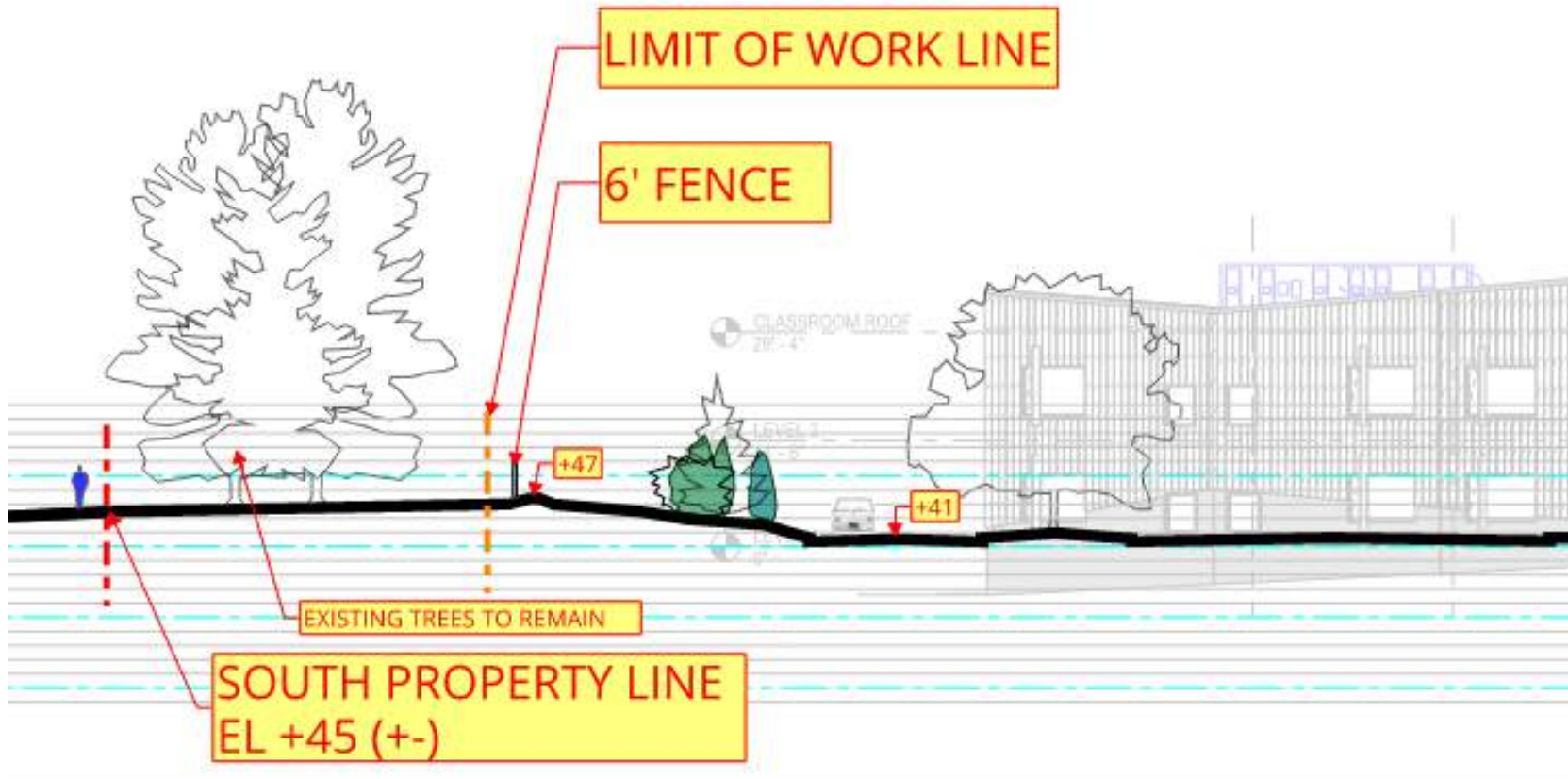


CROSS SECTION DETAIL AT EAST PROPERTY LINE

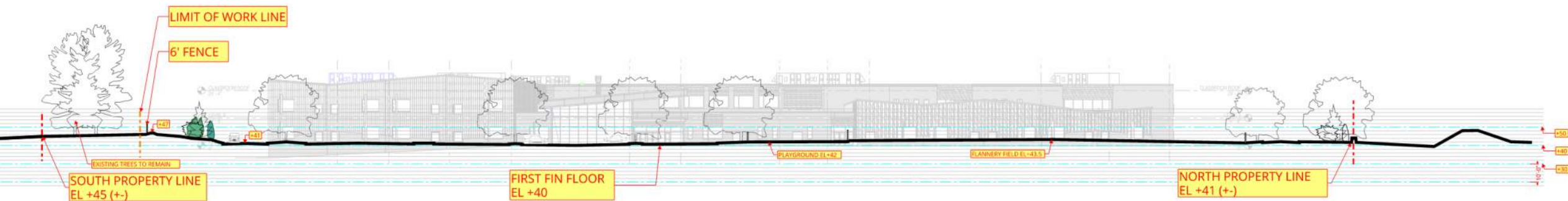


FULL EAST-WEST CROSS SECTION, LOOKING NORTH

LANDSCAPE DD PHASE SITE CROSS- SECTIONS



CROSS SECTION DETAIL AT SOUTH PROPERTY LINE



FULL NORTH-SOUTH CROSS SECTION, LOOKING WEST

CIVIL ENGINEERING: Drainage and Stormwater Strategies

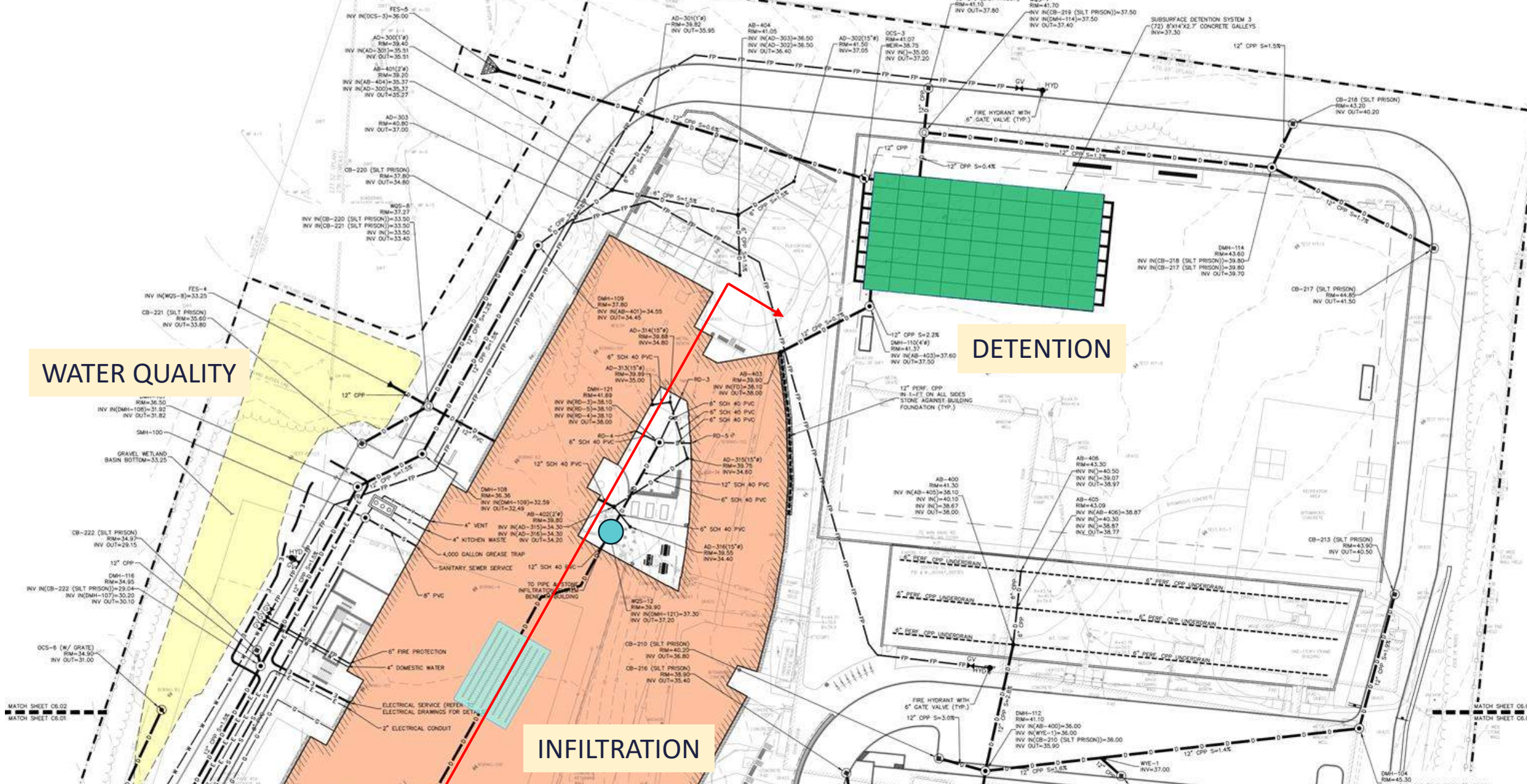
WATER QUALITY

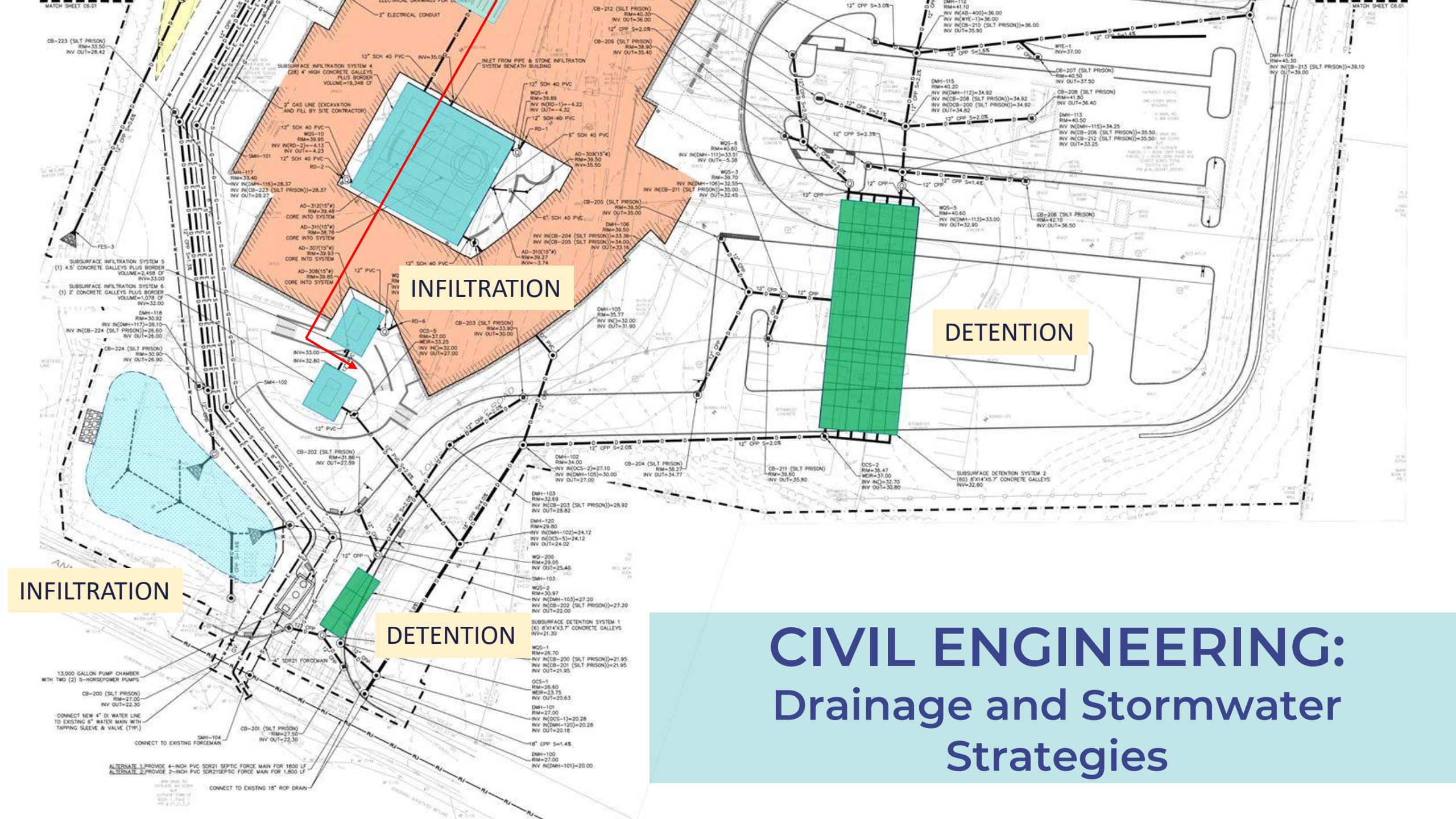
DETENTION

INFILTRATION

MATCH SHEET C6.02
MATCH SHEET C6.01

MATCH SHEET C6.02
MATCH SHEET C6.01





INFILTRATION

DETENTION

INFILTRATION

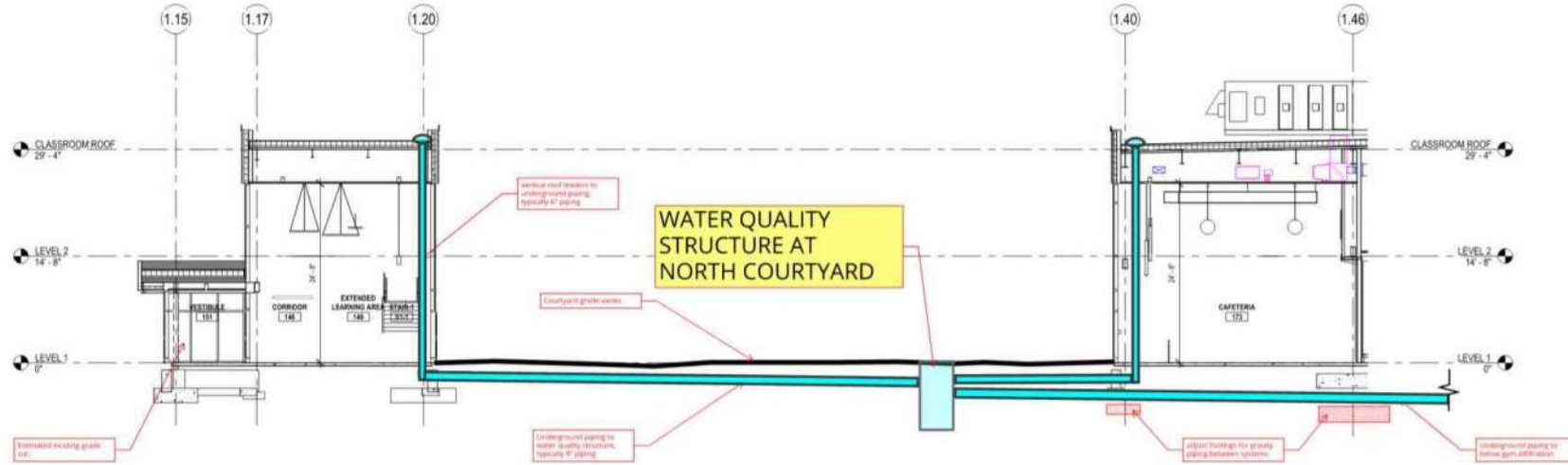
DETENTION

CIVIL ENGINEERING: Drainage and Stormwater Strategies

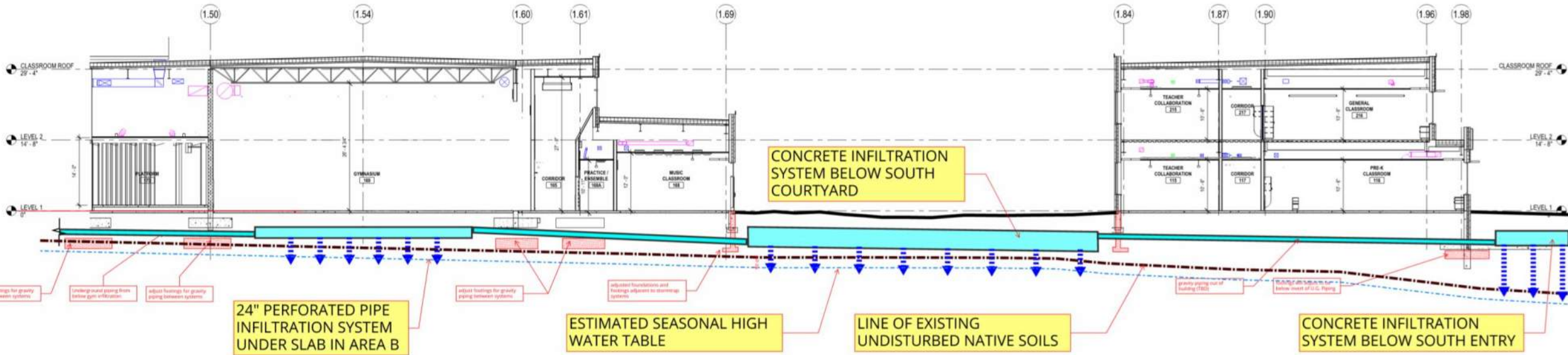
ALTERNATE 1: PROVIDE 4-INCH PVC SDR21 SEPTIC FORCE MAIN FOR 1800 LF
ALTERNATE 2: PROVIDE 2-INCH PVC SDR21 SEPTIC FORCE MAIN FOR 1,800 LF

CONNECT TO EXISTING 18" RCP DRAIN

CIVIL ENGINEERING: Drainage and Stormwater Strategies



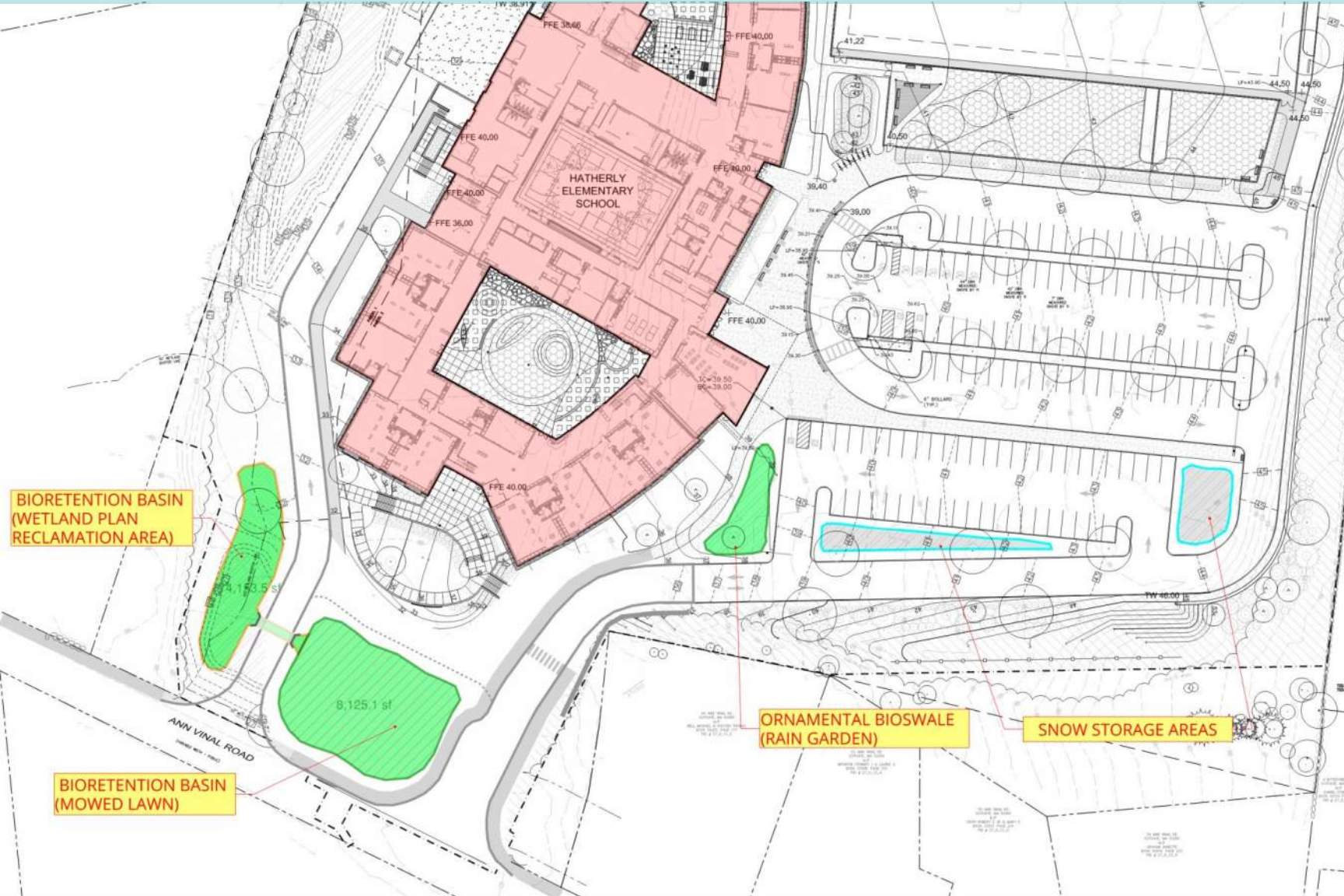
1 BUILDING SECTION - NORTH COURTYARD
1/8" = 1'-0"



2 BUILDING SECTION - GYM AND SOUTH COURTYARD
1/8" = 1'-0"

Building Section Showing Elements of Infiltration System

CIVIL ENGINEERING: Drainage and Stormwater Strategies



Bioswale/Rain Garden



Bioretention Basin. Grass



Bioretention Basin, Planted

Bioretention Basins



PLAYGROUND DESIGN



MEETING TAKE-AWAYS:

- More swings!
- Less age 3-5 equipment in Grade K-2 playground
- More and better shade
- More accessible equipment in South Courtyard
- More basketball courts (or baskets on side)
- Utilize north triangle at grade 5-8 playground
- Higher fence behind courts



Site Entry View



East Building Elevation



East Building Entry Elevation



Main Entry Lobby



Library



Cafeteria and North Courtyard



Extended Learning Area

QUESTIONS?





Scituate Public Schools

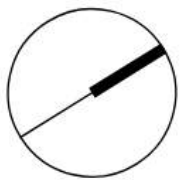
VERTEX[®]

dw
DORE + WHITTIER



Thank You.





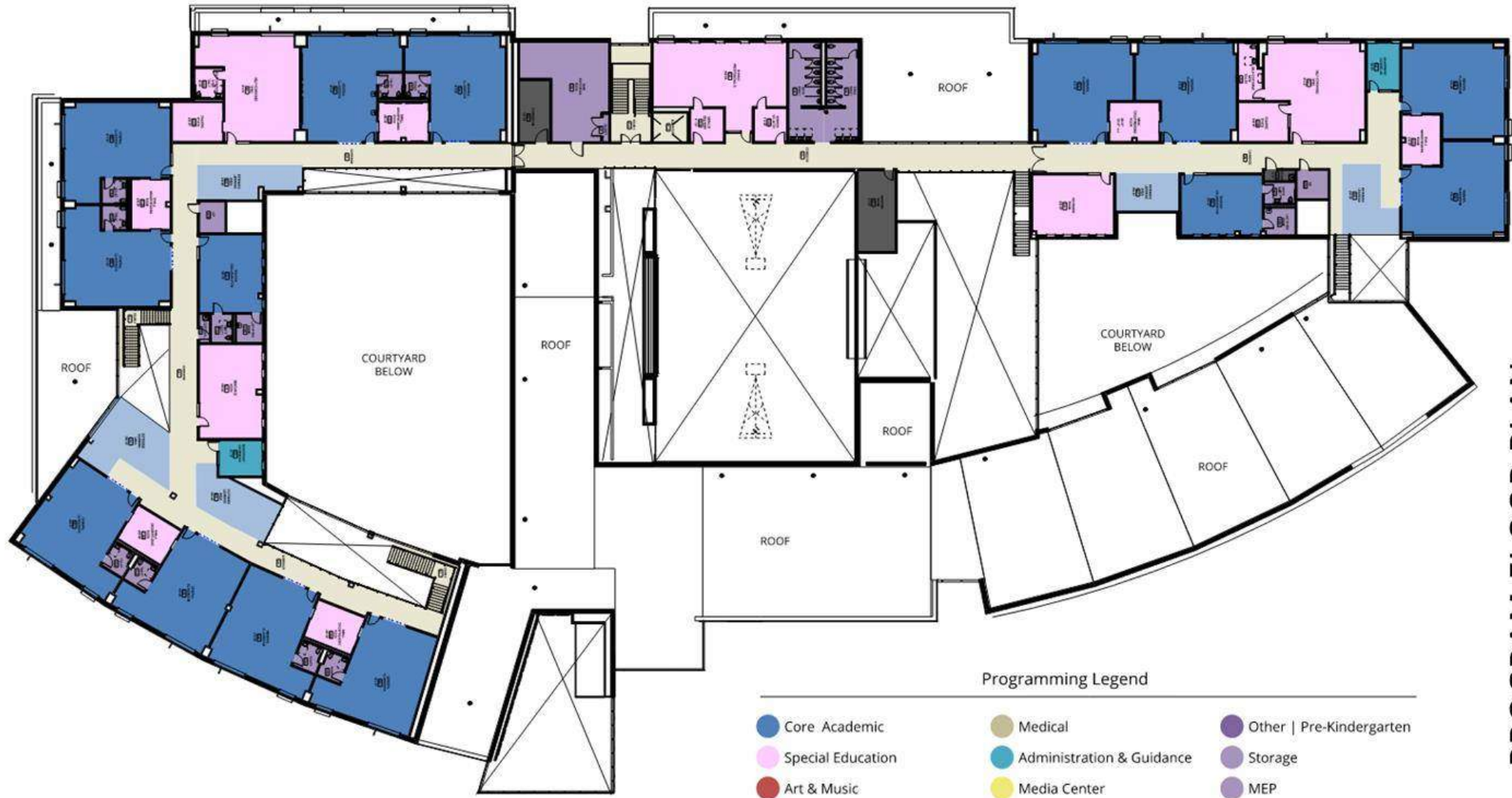
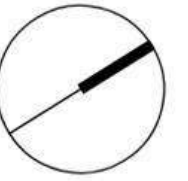
Programming Legend

- | | | |
|-----------------------------|---------------------------|--------------------------|
| Core Academic | Medical | Other Pre-Kindergarten |
| Special Education | Administration & Guidance | Storage |
| Art & Music | Media Center | MEP |
| Health & Physical Education | Custodial & Maintenance | Toilets |
| Dining & Food Service | Dining & Food Service | Circulation |

PROGRAM FLOOR PLAN

Level 1





Programming Legend

Core Academic	Medical	Other Pre-Kindergarten
Special Education	Administration & Guidance	Storage
Art & Music	Media Center	MEP
Health & Physical Education	Custodial & Maintenance	Toilets
Dining & Food Service	Dining & Food Service	Circulation

PROGRAM FLOOR PLAN

Level 2

