

# CUSHING - HATHERLY ELEMENTARY SCHOOL PROJECT



Scituate Public Schools



**SCITUATE SCHOOL COMMITTEE  
PROJECT UPDATE**

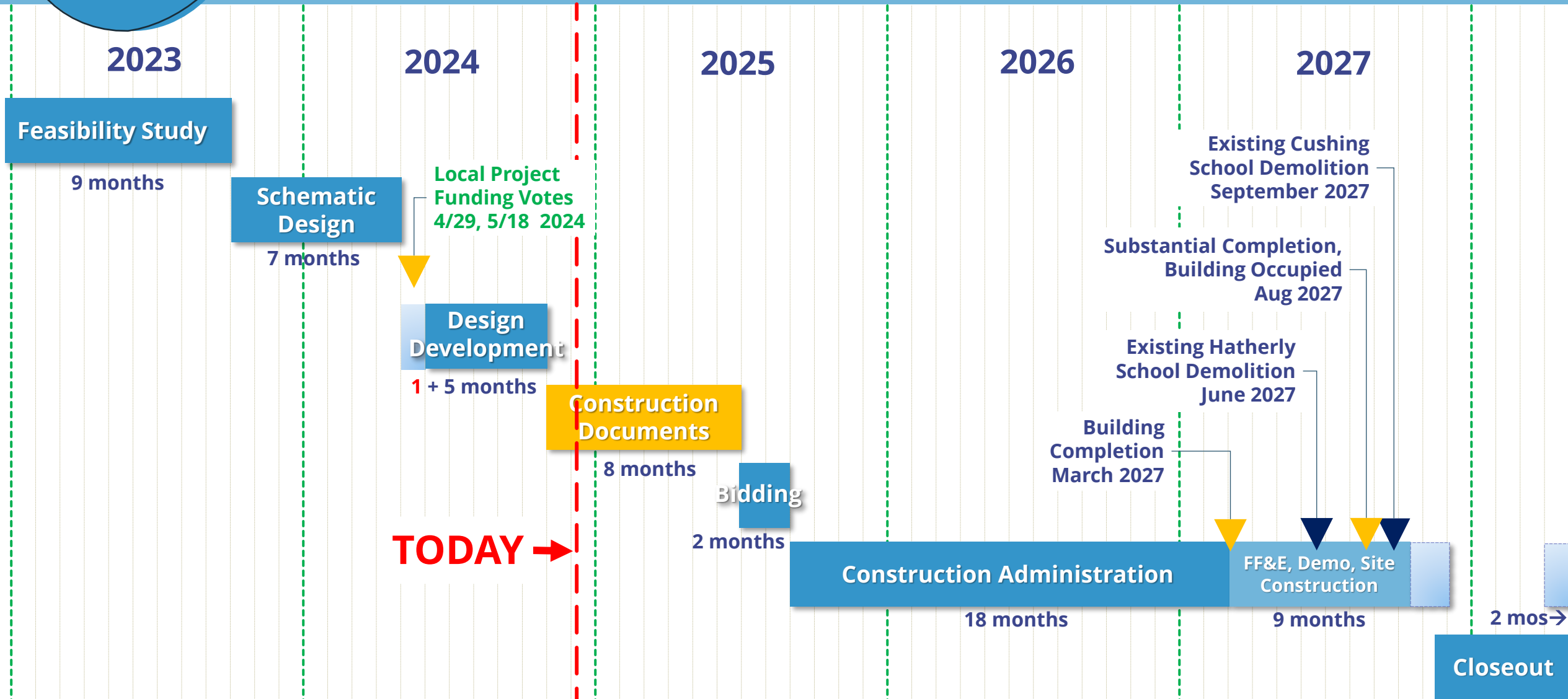
December 9, 2024

# Agenda

## 12/9/24 – School Committee Update

- Project Schedule Update
- Design Process Update
- Budget Update
- Summary of Design Updates since Schematic Design Phase
- Questions?

# Overall Project Schedule



# Design Process: Listening to a wide variety of voices



- User Group Meetings (faculty & staff)
- School Building Committee
- Working Group
- Sustainability/Mechanical Working Group
- Playground Working Group
- Safety and Security Working Group
- Librarian Review of Media Center
- Regulatory Meetings: Planning, Conservation Commission, Code Review



# DD PHASE COST ESTIMATE SUMMARY

## The Project is On-Budget

Project Budget Remains \$119.4 Million

All design scope accounted for, including:

- Ann Vinal Road sewer force main replacement & connections
- Site Plan Revisions
- Energy Code Compliance Measures
- Cushing School Abatement, Demolition, Site Leveling

Possible Add-Alternates:

- Flannery Field – Artificial Turf in lieu of Natural Grass
- Terrazzo Floors at Main Public Spaces in lieu of Linoleum

# DD PHASE COST ESTIMATE SUMMARY

SD CONSTRUCTION  
BUDGET \$95.28 M

DD RECONCILED  
CONSTRUCTION  
ESTIMATE \$92.52 M

DELTA (\$2.77 M)

PROJECT BUDGET \$119.4 M



# LANDSCAPE DD PHASE SITE PLAN

## CHANGES SINCE SCHEMATIC DESIGN:

- “Flipped” playground and parking/drop-off loop
- Added 17 parking spaces: 130 → 147
- East drive moved and edge strip retaining wall added to provide more buffer with neighbors
- Added second one-way bus-only entry drive and reconfiguring main entry drive alignment  
*(not yet pictured)*



Aerial View Looking West



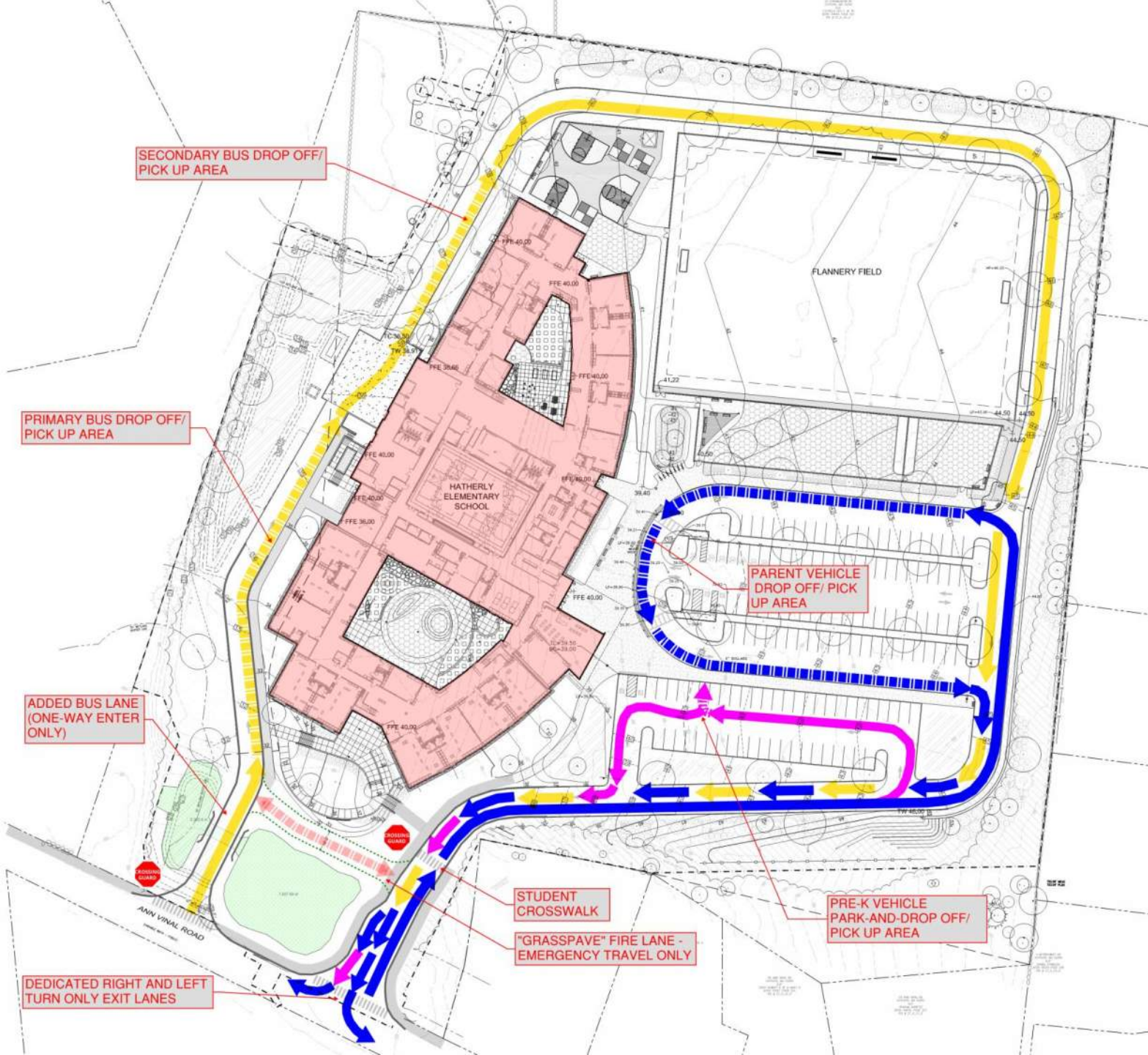


# CIVIL / TRAFFIC DESIGN

## Alternate Site Access

### PROPOSED CHANGES :

- Adding one-way Bus-only entrance
- Shifting main entrance east to maximize stormwater infiltration area
- Secondary bioretention area planned next to wetland buffer zone, linked under drive via box culvert
- Maintaining Fire Dept access via grasspave driveway





# PLAYGROUND DESIGN

## MEETING TAKE-AWAYS:

- More swings!
- Less age 3-5 equipment in Grade K-2 playground
- More and better shade
- More accessible equipment in South Courtyard
- More basketball courts (or baskets on side)
- Utilize north triangle at grade 5-8 playground
- Higher fence behind courts





# East Building Elevation



# Drop-off Loop View

QUESTIONS?





Scituate Public Schools

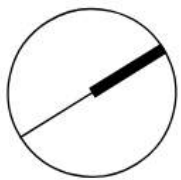
**VEIRTEX<sup>®</sup>**

**dw**  
DORE + WHITTIER



**Thank You.**





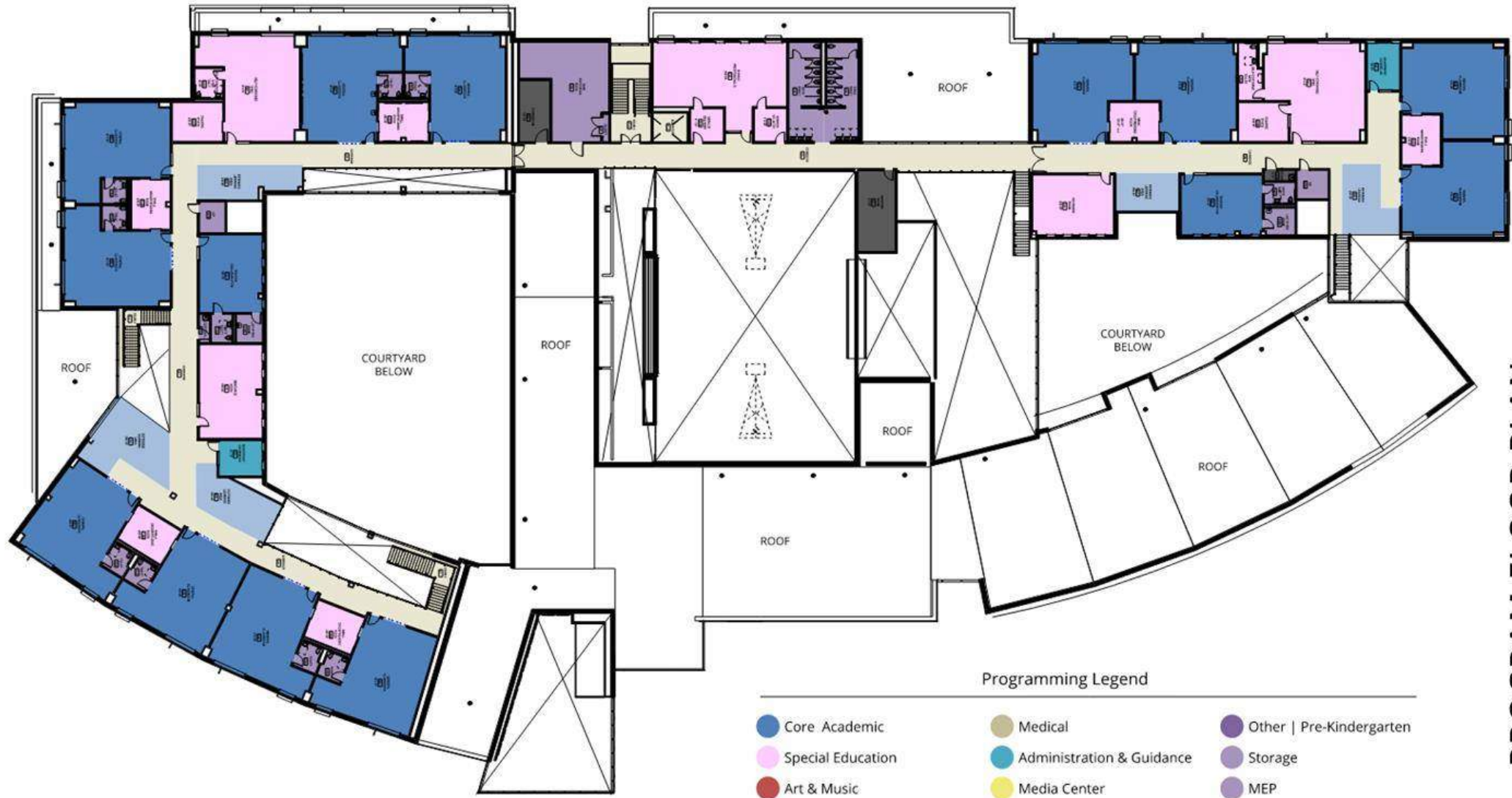
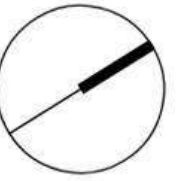
Programming Legend

- |                             |                           |                          |
|-----------------------------|---------------------------|--------------------------|
| Core Academic               | Medical                   | Other   Pre-Kindergarten |
| Special Education           | Administration & Guidance | Storage                  |
| Art & Music                 | Media Center              | MEP                      |
| Health & Physical Education | Custodial & Maintenance   | Toilets                  |
| Dining & Food Service       | Dining & Food Service     | Circulation              |

PROGRAM FLOOR PLAN

Level 1





Programming Legend

Core Academic	Medical	Other   Pre-Kindergarten
Special Education	Administration & Guidance	Storage
Art & Music	Media Center	MEP
Health & Physical Education	Custodial & Maintenance	Toilets
Dining & Food Service	Dining & Food Service	Circulation

**PROGRAM FLOOR PLAN**

Level 2

