

# CUSHING - HATHERLY ELEMENTARY SCHOOL PROJECT



Scituate Public Schools



**SCHOOL BUILDING  
COMMITTEE**

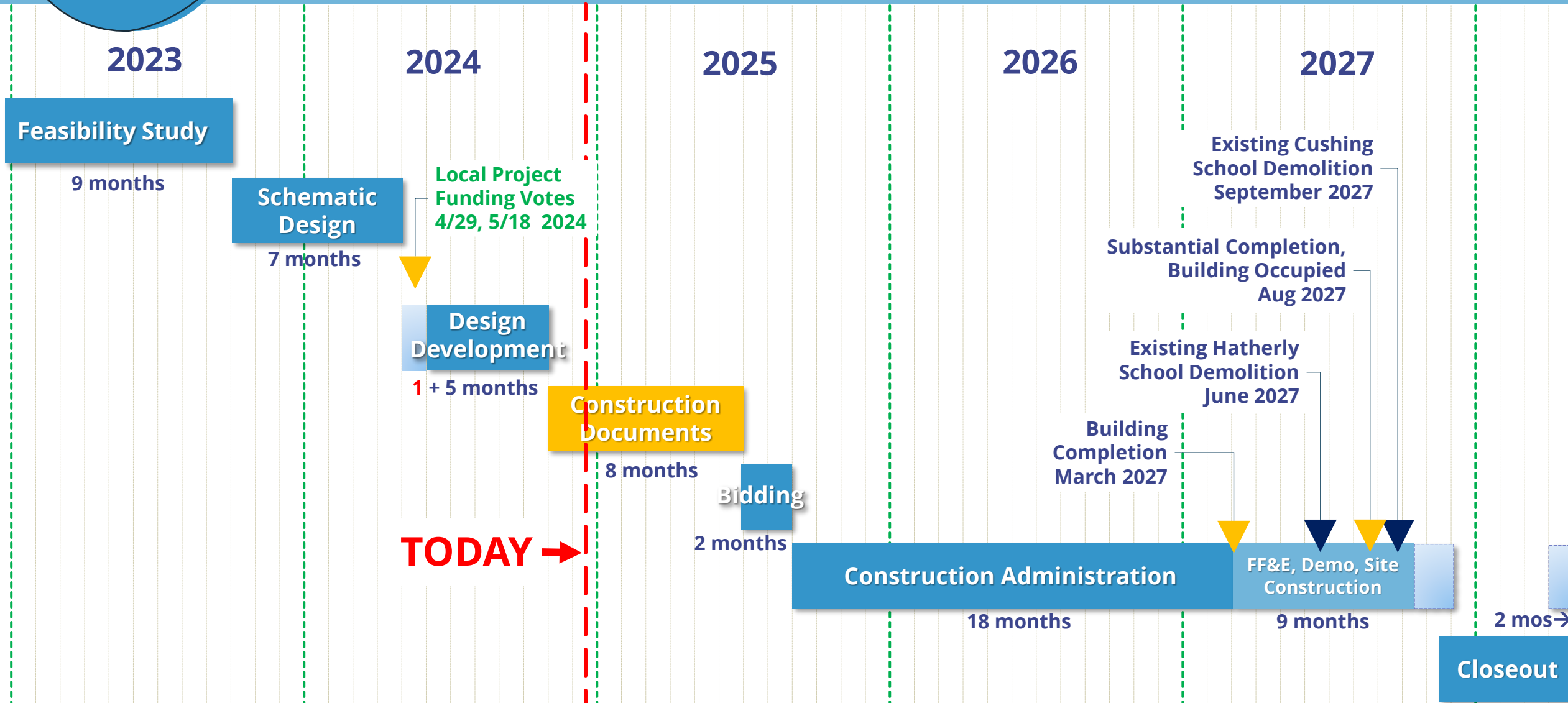
December 18, 2024

# Agenda

## 12/18/24 – School Building Committee

- Project Schedule Update
- Exterior Design Updates
- Permitting Update:
  - Site Lighting Plan
- Sustainability Working Group Update
- Questions?

# Overall Project Schedule





# EXTERIOR DESIGN UPDATES: Metal Wall Panels

8/28/2024



Flat Metal Wall Panel, Light Woodgrain finish

8/28/2024



**Flat Metal Wall Panel, light woodgrain finish**

8/28/2024



**Flat Metal Wall Panel, Light Woodgrain finish**

8/28/2024



**Flat Metal Wall Panel, Light Woodgrain Finish**



12/18/2024



Design Development, Scalloped Metal Wall Panel

12/18/2024



**Design Development: Scalloped metal wall panel**

# Scalloped metal wall panel

12/18/2024



Scalloped panel changes as the sun moves around the building

12/18/2024



# Exterior Materials Update: Scalloped panel details

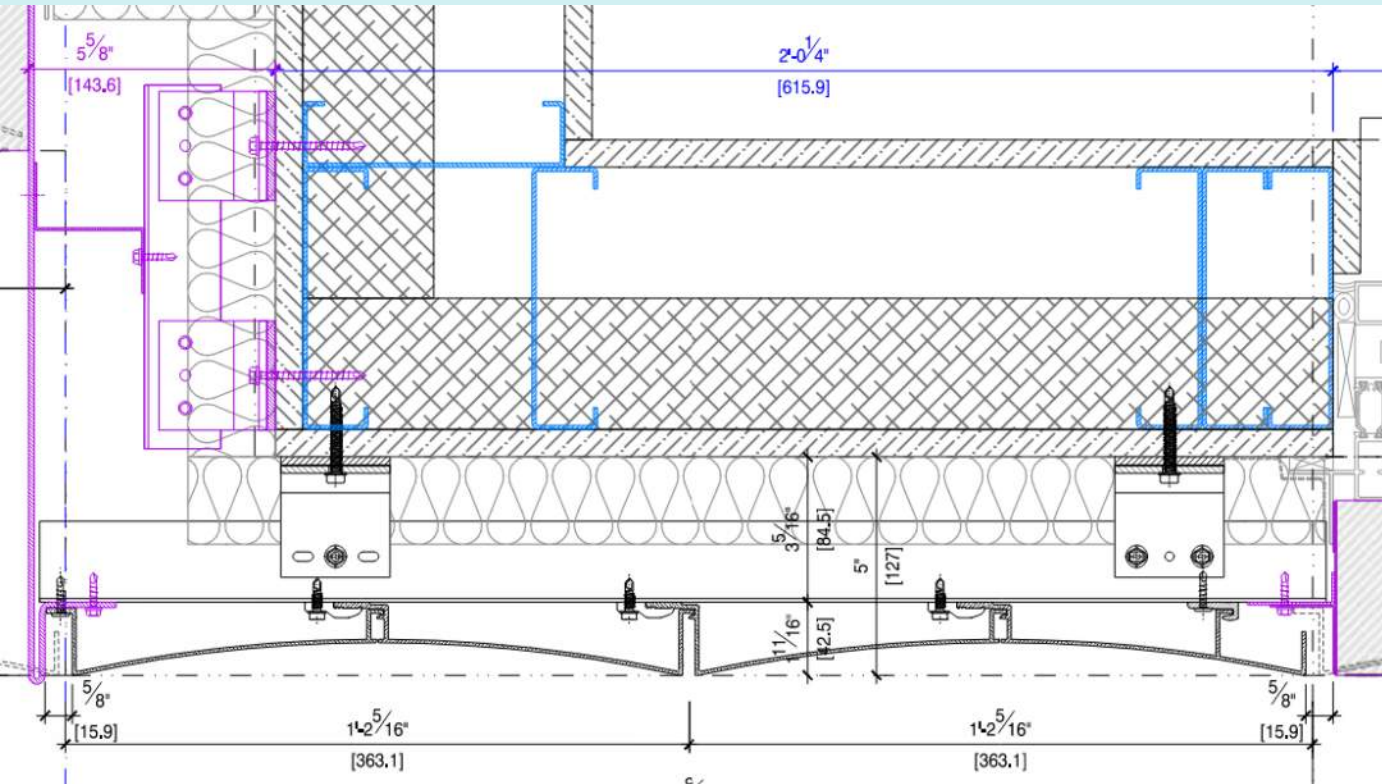
- Same manufacturer as previous 'woodgrain' panel shown
- Offers more visual texture, shadow play, and subtlety at a distance
- Allows better color choice
- *No difference in price from flat "woodgrain" look panel*



Metal panel mockup, Harvard Univ.  
(not actual proposed color)



# Scalloped Panel Shape



Exterior Wall Plan Detail



Metal panel mockup



Aerial View Looking West



# EXTERIOR DESIGN UPDATES: Accent Color of Sunshades



11/1/2023



# “Dunes” – Option 1

View from Ann Vinal Road

Pre-  
12/18/2024

**SUNSHADE**  
**COLOR OPTION 1**  
**DARKER BLUE**



Proposed  
12/18/2024

**SUNSHADE**  
**COLOR OPTION 2**  
**LIGHTER BLUE**



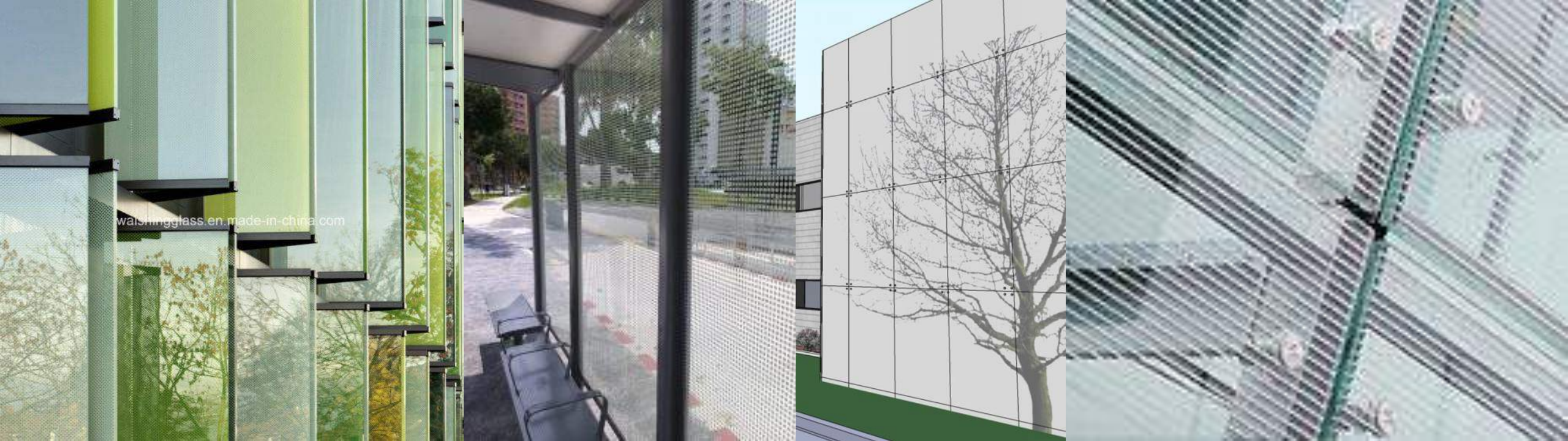


**EXTERIOR DESIGN UPDATES:  
Accent Color of Library glass fritting**

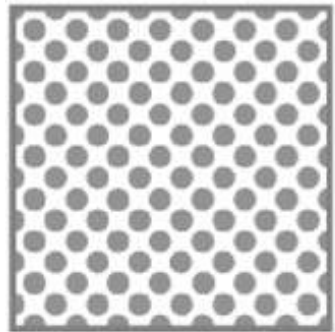


# GLASS: CERAMIC FRIT PROCESS

Thin ceramic layer coated onto glass,  
which is then heat tempered to make  
a permanent bond with the glass.



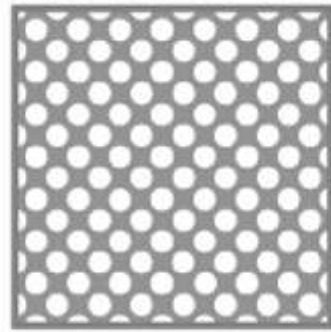
waishingglass.en.made-in-china.com



Sample 2: Dots  
Dot Diameter: 3mm  
40% Coverage



Sample 3: Lines  
Line Width: 3mm  
50% Coverage



Sample 4: Holes  
Hole Diameter: 3mm  
60% Coverage

## CERAMIC FRITTING

- Can introduce color to glass
- Possible graphic aspect
- Aids with sun shading and glare control
- Preserves views to outdoors

11/1/2023



Original Library glass design

Entry Focus

3/1/2024



Second generation Library glass design



9/1/2024



Third generation Library glass design

12/18/2024



Fourth generation Library glass design



**LIBRARY DESIGN DEVELOPMENT:  
FRITTED GLASS PATTERN**



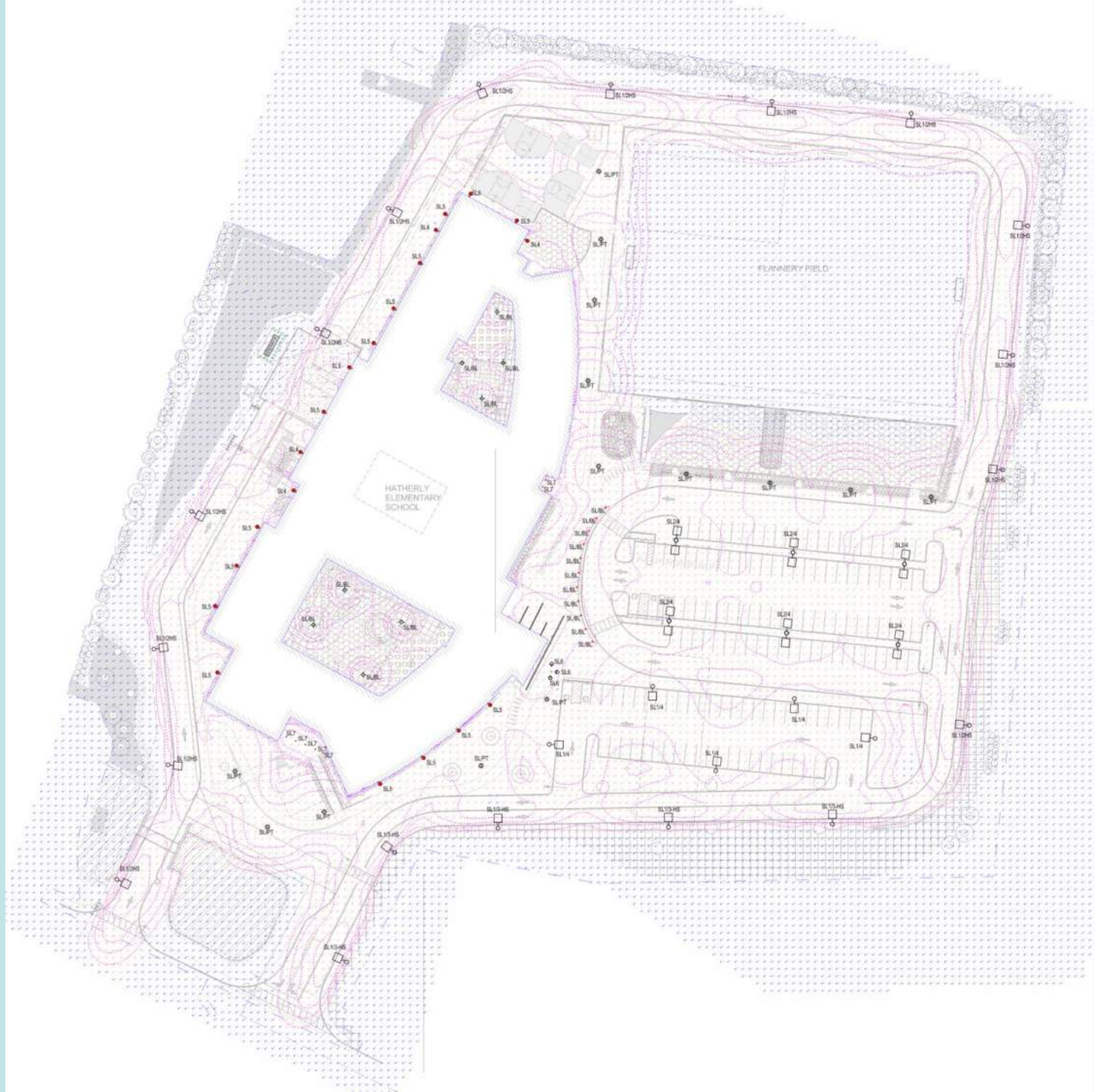
# PERMITTING UPDATE

# PERMITTING UPDATE

- Nitsch (Civil Engineer) and LEC (Wetlands Consultants) are finishing up Notice of Intent (NOI - wetlands permit application) to Conservation Commission
- D+W and team are finishing up Major Site Plan Review application to Planning Board
- Both will be submitted 12/20/24

# Site Electrical Lighting Plan

- Pole-mounted fixtures are 20' at parking, 12' at pedestrian areas
- 3' tall bollard lights at drop off loop and along walkways
- Building-mounted lighting also shown
- Point-by-point grid of lighting levels plotted using real light spread data from proposed fixtures
- Contours shown on the drawing indicate lighting levels of .1, .25, .50, and 1 foot-candle
- All fixtures are 100% cutoff for dark sky compliance
- All lighting is programmable
- NO LIGHT TRESPASS TO NEIGHBORS



# Sustainability Working Group Update

## Building Automation Consultant

- Sustainability WG met with Interval Data Systems (IDS) 12/13
- Vertex is working to obtain a second proposal
- Additional information to be incorporated into proposal(s)
- Update at the next School Building Committee meeting in January

QUESTIONS?







Scituate Public Schools

**VERTEX**<sup>®</sup>

**dw**  
DORE + WHITTIER



**Thank You.**

