



**Hatherly Elementary School
72 Ann Vinal Road
Scituate, Massachusetts**

AHERA INSPECTION REPORT/MANAGEMENT PLAN

May 2021

PREPARED FOR:

Scituate Public Schools
606 Chief Justice Cushing Highway
Scituate, Massachusetts
Attn: Mr. Robert Dillon

PREPARED BY:

The Vertex Companies, Inc.
400 Libbey Parkway
Weymouth, MA 02189
781-952-6000

VERTEX Project No: 69699

Table of Contents

Section 1	- Introduction
	- Bulk Sampling Methodology
	- Homogeneous Area Hazard Assessment
Section 2	- Response Action Determination
Section 3	- Recommended Response Actions
Section 4	- Recordkeeping Requirements and Recommendations
Section 5	- Estimated Resources Needed to Complete Response Actions
Section 6	- Estimated Resources Required for the Abatement of the Identified ACBMs
Section 7	- Operations and Maintenance Program

Appendices

Appendix A	- Locations of the Identified ACBMs
Appendix B	- Estimated Costs Needed to Complete the Response Actions
Appendix C	- Estimated Costs for Abatement of the Identified ACBMs
Appendix D	- Schematic
Appendix E	- Laboratory Results
Appendix F	- Personnel Certifications
Appendix G	- Supplemental Forms

Introduction

The Vertex Companies, Inc. (VERTEX) conducted a 3-Year Re-inspection on April 20, 2021 as required by the 40 CFR 763 Asbestos Hazard Emergency Response Act (AHERA) at the Hatherly Elementary School located at 72 Ann Vinal Road in Scituate, Massachusetts. The AHERA regulation requires that each Local Education Agency (LEA) retain a certified/accredited Asbestos Inspector to conduct an initial inspection of all friable and non-friable known or assumed asbestos-containing building materials (ACBM) in each school building that they lease, own, or otherwise uses as a school building. The AHERA re-inspection is to be performed by an accredited inspector at least once every three years from the time of implementation of the original management plan. In addition, the LEA is responsible for conducting Six-Month Periodic Surveillance Inspections as required to effectively manage the identified ACBMs in place at the school.

The Scituate Public School District may utilize the information obtained from the AHERA inspection to effectively manage the ACBMs identified at the Hatherly Elementary School.

SECTION 1
INSPECTION REPORT

Section 1
Inspection Report

Inspection Protocol

Massachusetts Department of Labor Standards (DLS) Certified Asbestos Inspector, Jason Mohre (AI#000262) performed the AHERA inspection. The Management Plan was updated by Massachusetts DLS Certified Asbestos Management Planner, Jason Mohre (AP#000080). The purpose of the inspection was to identify friable and non-friable ACBMs and perform a hazard assessment. As required by the AHERA regulation, the inspection survey procedures must include a visual inspection and assessment of the condition of all known locations of friable and non-friable ACBMs. It should be noted that under the AHERA regulations only ACBMs are inspected within the school building, other asbestos containing materials (ACMs) may be associated with the school that do not fall under AHERA ACBM definition. Examples of materials which have been found to contain asbestos include but are not limited to exterior window caulking, window glazing, and roofing material. Prior to school renovations any suspect materials not sampled or listed within the school's AMP, must be tested prior to disturbance. Furthermore, VERTEX recommends an Asbestos Containing Materials (ACMs) Survey be conducted prior to any renovation activities to comply with the Environmental Protection Agency (EPA) Title 40 CFR Part 61, National Emissions Standards for Hazardous Air Pollutants (NESHAPs) and the Massachusetts Department of Environmental Protection Regulations. Documentation for subsequent surveys not related to AHERA should be included in the overall Management Plan.

Assessment of potential asbestos hazards are subject to each individual inspector's judgment, and as a result, hazard assessments may vary.

Furthermore, the LEA Designated Person should assume that potential asbestos-containing pipe and fitting insulation or other ACBMs may be located behind walls and ceilings not accessible. Any renovation/demolition work that may penetrate these areas should be inspected prior to disturbance.

All available documentation of asbestos abatement projects, which have occurred since the initial AHERA inspection should be included with the Management Plan for the school.

VERTEX was provided and reviewed the following documents for the Hatherly Elementary School facility:

- AHERA Inspection and Management Plan for Hatherly Elementary School facility prepared by Covino, dated November 2013.
- AHERA Inspection and Management Plan for Cushing Elementary School facility prepared by TRC, dated October 2017.

Appendix D contains Certification Page for the Inspector and Management Planner involved with the inspection of the school.

Locations of the identified ACBMs with quantities observed, conditions assessed, homogeneous hazard assessment are presented in Appendix A of this report.

Section 1
Inspection Report (continued)
Bulk Sampling Methodology

Bulk samples were collected and analyzed to determine the identity of suspect materials and their composition. Bulk samples were collected in the following sampling scheme which is derived from AHERA: For non-friable materials, two (2) or more random samples are taken to determine asbestos content. Miscellaneous material samples are collected in locations where minimal damage would be inflicted on the material during sample collection.

EMSL Analytical Inc. of Woburn, MA using Polarized Light Microscopy (PLM) as described in 40 CFR 763, analyzed the bulk sample results attached. Each bulk sample was analyzed in accordance with U.S. Environmental Protection Agency (EPA) 600/R-93/116 recommended protocol-using PLM.

EMSL Analytical Inc. is accredited through the National Voluntary Laboratory Accreditation Program (#101147-0) and is a Massachusetts certified analytical laboratory (AA000188).

Hatherly Elementary School
April 2021 Sample Locations and Results

Table I

Sample Number	Sample Description	Sample Location	Asbestos Content
B-420-01A	1' x 1' Ceiling Tile (Pinhole)	Kitchen	2% Chrysotile
B-420-01B	1' x 1' Ceiling Tile (Pinhole)	Kitchen	Positive Stop
B-420-02A	2' x 4' Ceiling Tile (Fissure/Dot) New	Room 22	None Detected
B-420-02B	2' x 4' Ceiling Tile (Fissure/Dot) New	Room 22	None Detected
B-420-03A	2' x 4' Ceiling Tile (Speckled/Dot)	Room 21	None Detected
B-420-03B	2' x 4' Ceiling Tile (Speckled/Dot)	Hall to Rooms 21 and 22	None Detected

Section 1
Inspection Report (continued)
Bulk Sampling Methodology

Bulk samples were also collected by Covino Environmental (Covino) during their August 2013 inspection activities. The following table outlines the building materials collected and analyzed by Covino:

Hatherly Elementary School
August 2013 Sample Locations and Results
Table I

Sample Number	Sample Description	Sample Location	Asbestos Content
1A	Canvas Covering on Boiler Breeching	Boiler Room	None Detected
1B	Canvas Covering on Boiler Breeching	Boiler Room	None Detected
1C	Canvas Covering on Boiler Breeching	Boiler Room	None Detected
2A	Canvas Covering on Fiberglass Pipe	Crawl Space	None Detected
2B	Canvas Covering on Fiberglass Pipe	Crawl Space	None Detected
2C	Canvas Covering on Fiberglass Pipe	Crawl Space	None Detected
3A	1" Pipe Fitting Insulation	Crawl Space	20 % Chrysotile 15% Amosite
3B	1" Pipe Fitting Insulation	Crawl Space	Positive Stop
3C	1" Pipe Fitting Insulation	Kitchen	Positive Stop
3D	1" Pipe Fitting Insulation	Attic	Positive Stop
3E	1" Pipe Fitting Insulation	Attic	Positive Stop
3F	1" Pipe Fitting Insulation	Attic	Positive Stop
3G	1" Pipe Fitting Insulation	Office Closet	Positive Stop
3H	1" Pipe Fitting Insulation	Room 10 Storage	Positive Stop
3I	1" Pipe Fitting Insulation	Phys. Ed Office	Positive Stop
4A	6" Pipe Fitting Insulation	Crawl Space	8 % Chrysotile 25% Amosite 7% Crocidolite
4B	6" Pipe Fitting Insulation	Crawl Space	Positive Stop
4C	6" Pipe Fitting Insulation	Crawl Space	Positive Stop
4D	6" Pipe Fitting Insulation	Attic	Positive Stop
4E	6" Pipe Fitting Insulation	Attic	Positive Stop
5A	Vibration Dampener Cloth	Boiler Room	None Detected
5B	Vibration Dampener Cloth	Boiler Room	None Detected
5C	Vibration Dampener Cloth	Music Room	None Detected
6A	Duct Stick Pin Mastic	Boiler Room	30 % Chrysotile
6B	Duct Stick Pin Mastic	Boiler Room	Positive Stop
6C	Duct Stick Pin Mastic	Boiler Room	Positive Stop
7A	Plaster Base Coat	Boiler Room	None Detected
7B	Plaster Base Coat	Boiler Room	None Detected
7C	Plaster Base Coat	Boiler Room	None Detected
7D	Plaster Base Coat	Incinerator Room	None Detected

Hatherly Elementary School
August 2013 Sample Locations and Results
Table I (Continued)

Sample Number	Sample Description	Sample Location	Asbestos Content
7E	Plaster Base Coat	Incinerator Room	None Detected
8A	Plaster Skim Coat	Boiler Room	None Detected
8B	Plaster Skim Coat	Boiler Room	None Detected
8C	Plaster Skim Coat	Boiler Room	None Detected
8D	Plaster Skim Coat	Incinerator Room	None Detected
8E	Plaster Skim Coat	Incinerator Room	None Detected
9A	Interior Window Glazing	Janitor	3 % Chrysotile
9B	Interior Window Glazing	Room M-1	Positive Stop
10A	Abandoned Generator Pipe Insulation	Hall by Generator Room	60 % Chrysotile
10B	Abandoned Generator Pipe Insulation	Hall by Generator Room	Positive Stop
10C	Abandoned Generator Pipe Insulation	Kitchen Storage	Positive Stop
11A	Cementitious Window Sill	Janitor Office Bath	None Detected
11B	Cementitious Window Sill	Electric Room	None Detected
12A	Walk-in Cooler Ceiling Insulation	Kitchen	None Detected
12B	Walk-in Cooler Ceiling Insulation	Kitchen	None Detected
13A	Walk-in Cooler Cementitious Wall	Kitchen	5 % Chrysotile
13B	Walk-in Cooler Cementitious Wall	Kitchen	Positive Stop
14A	1' x 1' Fissured Ceiling Tile	Kitchen Bath	None Detected
14B	1' x 1' Fissured Ceiling Tile	Kitchen Bath	None Detected
14C	1' x 1' Fissured Ceiling Tile	Speech Room	None Detected
15A	1' x 1' Pin-Hole Ceiling Tile	Kitchen Hallway	6 % Amosite
15B	1' x 1' Pin-Hole Ceiling Tile	Kitchen	Positive Stop
15C	1' x 1' Pin-Hole Ceiling Tile	Kitchen	Positive Stop
16A	9" Brown Floor Tile	Kitchen Office	10 % Chrysotile
16B	9" Brown Floor Tile	Room 10 Closet	Positive Stop
16C	9" Brown Floor Tile	Room 10 Closet	Positive Stop
17A	9" Brown Floor Tile Mastic	Kitchen Office	10 % Chrysotile
17B	9" Brown Floor Tile Mastic	Room 10 Closet	Positive Stop
17C	9" Brown Floor Tile Mastic	Room 10 Closet	Positive Stop
18A	4" Black Covebase	Kitchen Office	None Detected
18B	4" Black Covebase	Room 21B	None Detected
18C	4" Black Covebase	Room 15	None Detected
19A	4" Black Covebase Adhesive	Kitchen Office	None Detected
19B	4" Black Covebase Adhesive	Room 21B	None Detected
19C	4" Black Covebase Adhesive	Room 15	None Detected
20A	12" Green Floor Tile	Cafeteria	None Detected
20B	12" Green Floor Tile	Cafeteria	None Detected
20C	12" Green Floor Tile	Cafeteria	None Detected

Hatherly Elementary School
August 2013 Sample Locations and Results
Table I (Continued)

Sample Number	Sample Description	Sample Location	Asbestos Content
21A	12" Green Floor Tile Mastic	Cafeteria	None Detected
21B	12" Green Floor Tile Mastic	Cafeteria	None Detected
21C	12" Green Floor Tile Mastic	Cafeteria	None Detected
22A	2' x 4' Fissured Ceiling Tile	Cafeteria	3 % Chrysotile
22B	2' x 4' Fissured Ceiling Tile	Cafeteria	Positive Stop
22C	2' x 4' Fissured Ceiling Tile	Cafeteria	Positive Stop
23A	Plaster Base Coat	Cafeteria	None Detected
23B	Plaster Base Coat	Cafeteria	None Detected
23C	Plaster Base Coat	Cafeteria	None Detected
24A	Plaster Skim Coat	Cafeteria	None Detected
24B	Plaster Skim Coat	Cafeteria	None Detected
24C	Plaster Skim Coat	Cafeteria	None Detected
25A	Canvas Covering on Duct	Music Room	30 % Chrysotile 15% Amosite
25B	Canvas Covering on Duct	Music Room	Positive Stop
25C	Canvas Covering on Duct	Music Room	Positive Stop
26A	4' x 8' Tectum Ceiling Tiles	Room 1	None Detected
26B	4' x 8' Tectum Ceiling Tiles	Room 4	None Detected
26C	4' x 8' Tectum Ceiling Tiles	Office	None Detected
27A	9" Black Floor Tile	Room 1	13 % Chrysotile
27B	9" Black Floor Tile	Room 4	Positive Stop
27C	9" Black Floor Tile	Office	Positive Stop
28A	9" Black Floor Tile Mastic	Room 1	10 % Chrysotile
28B	9" Black Floor Tile Mastic	Room 4	Positive Stop
28C	9" Black Floor Tile Mastic	Office	Positive Stop
29A	9" Tan Floor Tile	Room 1	12 % Chrysotile
29B	9" Tan Floor Tile	Room 4	Positive Stop
29C	9" Tan Floor Tile	Office	Positive Stop
30A	9" Tan Floor Tile Mastic	Room 1	12 % Chrysotile
30B	9" Tan Floor Tile Mastic	Room 4	Positive Stop
30C	9" Tan Floor Tile Mastic	Office	Positive Stop
31A	Pink Sink Undercoating	Room 1	None Detected
31B	Pink Sink Undercoating	Room 4	None Detected
31C	Pink Sink Undercoating	Room 21B	None Detected
32A	Mounted Cork Board	Room 1	None Detected
32B	Mounted Cork Board	Room 4	None Detected
32C	Mounted Cork Board	Room 21B	None Detected
33A	Gold Carpet Adhesive	Speech Room	None Detected
33B	Gold Carpet Adhesive	Library	None Detected
33C	Gold Carpet Adhesive	Library	None Detected

Hatherly Elementary School
August 2013 Sample Locations and Results
Table I (Continued)

Sample Number	Sample Description	Sample Location	Asbestos Content
34A	9" Green Floor Tile	Hall by Room 6	10 % Chrysotile
34B	9" Green Floor Tile	Hall by Room 18	Positive Stop
34C	9" Green Floor Tile	Hall by Room 18	Positive Stop
35A	9" Green Floor Tile Mastic	Hall by Room 6	12 % Chrysotile
35B	9" Green Floor Tile Mastic	Hall by Room 18	Positive Stop
35C	9" Green Floor Tile Mastic	Hall by Room 18	Positive Stop
36A	Plaster Base Coat	Boys Room	None Detected
36B	Plaster Base Coat	Girls Room	None Detected
36C	Plaster Base Coat	Office	None Detected
37A	Plaster Skim Coat	Boys Room	None Detected
37B	Plaster Skim Coat	Girls Room	None Detected
37C	Plaster Skim Coat	Office	None Detected
38A	4' x 8' Wall Panel Adhesive	Office	None Detected
38B	4' x 8' Wall Panel Adhesive	Office	None Detected
38C	4' x 8' Wall Panel Adhesive	Office	None Detected
39A	Perimeter Interior Window Glazing	Office	None Detected
39B	Perimeter Interior Window Glazing	Room 11	None Detected
39C	Perimeter Interior Window Glazing	Room 14	None Detected
40A	Cementitious Wall Panel Under Window	Office	40 % Chrysotile
40B	Cementitious Wall Panel Under Window	Room 21B	Positive Stop
40C	Cementitious Wall Panel Under Window	Room 11	Positive Stop
41A	Transite Tabletop		None Detected
41B	Transite Tabletop		None Detected
42A	Interior Window Glazing	Hall by Room 11	None Detected
42B	Interior Window Glazing	Hall by Room 11	None Detected
42C	Interior Window Glazing	Teachers Room	None Detected
43A	Gypsum Wall Board	Room 21	None Detected
43B	Gypsum Wall Board	Room 22	None Detected
43C	Gypsum Wall Board	Math	None Detected
44A	12" White/ Blue Floor Tile	Trailer Hallway	None Detected
44B	12" White/ Blue Floor Tile	Trailer Hallway	None Detected
44C	12" White/ Blue Floor Tile	Trailer Hallway	None Detected
45A	12" White/ Blue Floor Tile Mastic	Trailer Hallway	None Detected
45B	12" White/ Blue Floor Tile Mastic	Trailer Hallway	None Detected
45C	12" White/ Blue Floor Tile Mastic	Trailer Hallway	None Detected
46A	12" Tan Floor Tile	Room 17	None Detected
46B	12" Tan Floor Tile	Room 17	None Detected
46C	12" Tan Floor Tile	Room 17	None Detected

Hatherly Elementary School
August 2013 Sample Locations and Results
Table I (Continued)

Sample Number	Sample Description	Sample Location	Asbestos Content
47A	12" Tan Floor Tile Mastic	Room 17	4 % Chrysotile
47B	12" Tan Floor Tile Mastic	Room 17	Positive Stop
47C	12" Tan Floor Tile Mastic	Room 17	Positive Stop
48A	Glazing Compound	Room 19	None Detected
48B	Glazing Compound	Room 19	None Detected
48C	Glazing Compound	Room 19	None Detected

Bold indicates bulk sample analyzed positive for Asbestos (>1% asbestos containing)

Positive Stop indicates representative bulk sample analyzed positive for Asbestos.

Section 1
Inspection Report (continued)

The following is a list of materials that were determined or assumed to be asbestos-containing:

9" Tan Floor Tile	9" Tan Floor Tile Mastic (Black)
9" Gray Floor Tile	9" Gray Floor Tile Mastic (Black)
9" Green Floor Tile	9" Green Floor Tile Mastic (Black)
9" Black Floor Tile	9" Black Floor Tile Mastic (Black)
9" Brown Floor Tile	9" Brown Floor Tile Mastic (Black)
Black Residual Mastic	Cementitious Panel Under Window
1' x 1' Pinhole Ceiling Tile	2' x 4' Fissured Ceiling Tile
Pipe Fitting Insulation	Canvas Covering on Duct
Cementitious Wall Panel on Cooler	Interior Window Glazing #2

Based on the review of the TRC 2017 Re-Inspection report the following materials had been removed from the Management Plan:

Abandoned Generator Pipe Insulation
Duct Stick Pin Mastic

The following is a list of materials that were found and determined to be non-asbestos:

12" Green Floor Tile	12" Green Floor Tile Mastic
12" White/ Blue Floor Tile	12" White/ Blue Floor Tile Mastic
Gold Carpet Adhesive	12" Tan Floor Tile
4" Black Covebase	4" Black Covebase Adhesive
Canvas Covering on Boiler Breeching	Canvas Covering on Fiberglass Pipe
Vibration Dampener Cloth	Gypsum Wall Board
Plaster Base Coat	Plaster Skim Coat
Cementitious Window Sill	1' x 1' Fissured Ceiling Tile
Walk-in Cooler Ceiling Insulation	4' x 8' Tectum Ceiling Tiles
Pink Sink Undercoating	Mounted Cork Board
4' x 8' Wall Panel Adhesive	Perimeter Interior Window Glazing
Transite Tabletop	Interior Window Glazing #1
Glazing Compound	

VERTEX recommends an ACMs Survey be conducted prior to any renovation activities to comply with the EPA Title 40 CFR Part 61, NESHAPs and the Massachusetts Department of Environmental Protection Regulations.

Section 1
Inspection Report (continued)
Hazard Assessment

Each ACBM homogeneous area is assessed to determine the asbestos hazard. Factors considered when assessing homogeneous area hazard include: the friability of the material, the condition of material including type, severity, and extent of damage, the material's potential for disturbance (including accessibility and air flow) and the material's potential for damage. From this classification, a decision tree is used to determine the appropriate response action sufficient to protect human health and environment.

The location, estimated quantities, condition and Homogenous Area Hazard Assessment Category for the identified ACBMs are presented in Appendix A. The following is homogeneous area assessment for each ACBM identified.

Homogeneous Area Assessment

Homogeneous Area #1-Pipe Fitting Insulation

Classification: Friable Thermal System Insulation

Asbestos-containing Pipe Fitting Insulation is located in the Kitchen Storage, Kitchen Office, Janitor Office, A/V Room, Attic above Janitor Closet, Motor Room, Room 10 Storage, Pys. Ed Office and Crawl Space. In addition, the Designated Person should assume that potential asbestos-containing pipe fitting insulation may be located behind walls and ceilings not accessible. Please refer to Appendix A which includes the locations, conditions, and estimated quantities. The pipe fitting insulation where accessible was observed in generally good condition, friable and presents a potential for damage except for displayed damage observed within the Room 10 Storage.

Homogeneous Area #2-Canvas Covering on Duct

Classification: Friable Thermal System Insulation

Asbestos-containing Canvas Covering on Duct is located in the Motor Room, Attic above Janitor Closet, and the Teachers Room Closet at the school. The Canvas Covering on Duct was observed in generally good condition, friable and presents a potential for damage.

Homogeneous Area #3-1' x 1' Pinhole Ceiling Tile

Classification: Friable Miscellaneous ACBM

Asbestos-containing 1' x 1' Pinhole Ceiling Tile is located in the Kitchen and Kitchen Office at the school. The 1' x 1' Pinhole Ceiling Tile was observed in generally good condition, friable and presents a potential for damage.

Section 1
Inspection Report (continued)
Hazard Assessment

Homogeneous Area #4-2' x 4' Fissured Ceiling Tile

Classification: Friable Miscellaneous ACBM

Asbestos-containing 2' x 4' Fissured Ceiling Tile is located in Cafeteria at the school. The 1' x 1' Pinhole Ceiling Tile was observed in generally good condition, friable and presents a potential for damage.

Homogeneous Area #5- 9"x 9" Gray Floor Tile

Classification: Non-Friable Miscellaneous ACBM

Asbestos-containing 9" x 9" Gray Floor Tile is generally located within classrooms at the school. Please refer to Appendix A for the locations and estimated quantities. The 9" Gray Floor Tile generally displays minor damage, non-friable and presents a potential for damage.

Homogeneous Area #6- 9"x 9" Tan Floor Tile

Classification: Non-Friable Miscellaneous ACBM

Asbestos-containing 9" x 9" Tan Floor Tile is generally located within the Main Hallway, Lobby and Gym at the school. Please refer to Appendix A for the locations and estimated quantities. The 9" Tan Floor Tile generally displays minor damage, non-friable and presents a potential for damage.

Homogeneous Area #7- 9"x 9" Green Floor Tile

Classification: Non-Friable Miscellaneous ACBM

Asbestos-containing 9" x 9" Green Floor Tile is located within the Hallway between Room 6 and 7 at the school. The 9" Green Floor Tile displayed minor damage, non-friable and presents a potential for damage.

Homogeneous Area #8- 9"x 9" Black Floor Tile

Classification: Non-Friable Miscellaneous ACBM

Asbestos-containing 9" x 9" Black Floor Tile is located on the border area of the classrooms at the school. The 9" Black Floor Tile is in generally good condition, non-friable and presents a potential for damage.

Section 1
Inspection Report (continued)
Hazard Assessment

Homogeneous Area #9- 9"x 9" Brown Floor Tile

Classification: Non-Friable Miscellaneous ACBM

Asbestos-containing 9" x 9" Brown Floor Tile is located within the Kitchen Office and Room 10 Storage at the school. The 9" Brown Floor Tile is in generally good condition, non-friable and presents a potential for damage.

Homogeneous Area #10- Black Floor Tile Mastic

Classification: Non-Friable Miscellaneous ACBM

Asbestos-containing Black Floor Tile Mastic is associated with the gray, tan, brown and green colored 9" Floor Tile, non-friable and presents a potential for damage. Please refer to Appendix A for the locations and estimated quantities.

Homogeneous Area #11- Black Residual Floor Tile Mastic

Classification: Non-Friable Miscellaneous ACBM

Asbestos-containing Black Residual Floor Tile Mastic is located within the Cafeteria and Rooms 17 and 19 under 12" Non-Asbestos Containing Floor Tile. The Black Residual Mastic is covered, non-friable and presents a potential for damage.

Homogeneous Area #12- Cementitious Panels Under Windows

Classification: Non-Friable Miscellaneous ACBM

Asbestos-containing Cementitious Panels Under the Windows are generally located within the Principal Office, Teachers Room, Art Room and Rooms 10 and 11 at the school.. The Cementitious Panels Under the Windows were observed in generally good condition, non-friable and presents a potential for damage.

Homogeneous Area #13- Cementitious Panel on Cooler

Classification: Non-Friable Miscellaneous ACBM

Asbestos-containing Cementitious Panels are located on the Cooler within the Kitchen at the school.. The Cementitious Panels were observed in generally good condition, non-friable and presents a potential for damage.

Section 1
Inspection Report (continued)
Hazard Assessment

Homogeneous Area #14- Interior Window Glazing

Classification: Non-Friable Miscellaneous ACBM

Asbestos-containing Interior Window Glazing is located on the window units of the Janitor Office Bathroom, Storage Room M-1 and Electrical Room at the school. The Interior Window Glazing was observed in generally good condition, non-friable and presents a potential for damage.

SECTION 2

RESPONSE ACTION DETERMINATION

Section 2

Response Action Determination

The following is based on the Decision Tree for Thermal System Insulation Type ACM. The recommended response actions are determined utilizing the “decision tree” approach for Response Action Determination as outlined in EPA’s “Asbestos Hazard Emergency Response Act,” (AHERA) 40 CFR 763. Because of defined friability factors associated with surfacing and miscellaneous materials versus thermal system insulation, separate decision trees are utilized for each group of materials.

Decision Trees are used to estimate the risk associated with exposure to asbestos in a given homogeneous area, and to recommend certain response actions, which are consistent with regulatory requirements. Eight response actions are recommended for both thermal system insulation and for surfacing/miscellaneous insulation. The response section number given to each homogeneous area indicates a priority for action, the lower the number, the more serious the hazard. Most response actions call for an operations and maintenance program, assuming that this is the least burdensome method which still protects human health and environment. This does not prohibit the building owner from removal of ACM at any time, if that is the preferred response action.

Recommended response actions are based upon the material condition, disturbance, air-flow and the potential for damage. Potential response actions include the following:

1. Significantly Damaged Thermal System Insulation: **Response Action 1.** Isolate the area and restrict access to the area. ACM should be removed as soon as possible.
2. Damaged Thermal System Insulation with High Disturbance: **Response Action 2.** Continue O&M program and remove the ACM as soon as possible or reduce the potential for disturbance.
3. Damaged Thermal System Insulation with Moderate Disturbance and in the Presence of an Air Stream: **Response Action 2.** Continue with O&M Program and remove the ACM as soon as possible or reduce the potential for disturbance.
4. Damaged Thermal System Insulation with Moderate Disturbance: **Response Action 3.** Repair ACM, continue with O&M Program.
5. Damaged Thermal System Insulation with Low Disturbance and in the Presence of an Air Stream: **Response Action 4.** Repair ACM, continue with O&M Program.
6. Damaged Thermal System Insulation with Low Disturbance: **Response Action 5.** Repair ACM, continue with O&M Program.
7. Undamaged Thermal System Insulation with High Disturbance: **Response Action 6.** Continue with O&M Program and take preventative measures to reduce disturbance.
8. Undamaged Thermal System Insulation with Moderate Disturbance: **Response Action 7.** Continue with O&M Program and take preventative measure to reduce disturbance.
9. Undamaged Thermal System Insulation with Low Disturbance: **Response Action 7.** Continue with O&M Program and take preventative measure to reduce disturbance.

Section 2

Response Action Determination

The following is based on the Decision Tree for Surfacing and Miscellaneous ACM. Recommended response actions are based upon friability, material condition, disturbance, air flow and the potential for damage. Potential response actions include the following:

1. Friable Surfacing or Miscellaneous ACM with Significant Damage: **Response Action 1:** Isolate the area and restrict access to the area. Remove the ACM as soon as possible.
2. Friable Surfacing or Miscellaneous ACM with Damage and a High Disturbance: **Response Action 2:** Continue with O&M Program and remove ACM as soon as possible or reduce the potential for disturbance.
3. Friable Surfacing or Miscellaneous ACM with Damage, Moderate Disturbance and in the Presence of an Air Stream: **Response Action 2:** Continue with O&M Program and remove ACM as soon as possible or reduce the potential for disturbance.
4. Friable Surfacing or Miscellaneous ACM with Damage and Moderate Disturbance: **Response Action 3:** Continue with O&M Program and schedule removal when practical and cost-effective
5. Friable Surfacing or Miscellaneous ACM with Damage, Low Disturbance and in the Presence of an Air Stream: **Response Action 4:** Continue with O&M Program and schedule removal when practical and cost-effective
6. Friable Surfacing or Miscellaneous ACM with Damage and Low Disturbance: **Response Action 5.** Continue with O&M Program and schedule removal when practical and cost-effective
7. Friable Surfacing or Miscellaneous ACM with No Damage and High Disturbance: **Response Action 6.** Take preventative measures to reduce the disturbance.
8. Friable Surfacing or Miscellaneous ACM with No Damage and Moderate Disturbance: **Response Action 7.** Take preventative measure to reduce the disturbance.
9. Friable Surfacing or Miscellaneous ACM with No Damage and Low Disturbance: **Response Action 8.** Take preventative measure to reduce the disturbance.
10. Non-Friable Surfacing or Miscellaneous ACM: **Response Action 8:** Continue with O&M until major renovation or demolition requires removal under the EPA NESHAPS, or until hazard assessment factors change.

Section 2
Response Action Determination (continued)

Advantages and Disadvantage to Abatement Alternatives

The decision trees outlined in AHERA 40 CFR 763 are used to provide the “best” alternative for the specific conditions in each homogeneous area.

Below is a discussion of the alternative approaches to asbestos management in a building.

Long Term Operation & Maintenance Program

Advantages:

- *Low initial cost for implementation
- *Good interim plan
- *An O&M program may be implemented and carried out by in house trained personnel.

Disadvantages:

- *Asbestos remains in the building
- *Condition of the asbestos must be monitored
- *Cost of training and special work procedures may be significant
- *Effectiveness may be limited where control of the building occupants is difficult

Encapsulation

Advantages:

- *Reduces the risk of release of asbestos fibers
- *Initial cost is lower than the cost of asbestos removal
- *Asbestos-containing material may still serve its initial purpose
- *Quick temporary means of repair

Disadvantages:

- *Asbestos remains in the building and encapsulant makes removal more difficult
- *Improper encapsulation may cause the material to delaminate or pull away from substrate
- *Asbestos-containing material must have an O&M program
- *Similar preparation for asbestos removal is required for encapsulation
- *Long term cost may be greater than asbestos removal is periodic reapplication of the encapsulant is required

Section 2
Response Action Determination (continued)

Enclosure

Advantages:

- *Enclosure reduces immediate exposure
- *Initial cost of enclosure is lower than the cost of asbestos removal
- *Asbestos-containing material may still serve its initial purpose
- *Quick temporary means of repair

Disadvantages:

- *Asbestos remains in place and later removal is more difficult
- *If maintenance is required of the systems insulated with asbestos, the asbestos will be exposed
- *An O&M program will have to be implemented for the asbestos-containing material
- *Similar preparation for asbestos removal is required for enclosure

Removal

Advantages

- *Asbestos-containing material is eliminated from the building
- *There is no need for an O&M plan
- *Initial cost is great, but the future costs are eliminated

Disadvantages:

- *Re-insulating, re-fireproofing, or replacement of materials may be required
- *Improper removal may raise levels of airborne fibers higher than background levels
- *The initial cost of removal is very high
- *Areas of the building involved in asbestos removal may not be occupied during removal

SECTION 3

RECOMMENDED RESPONSE ACTIONS

Section 3

Recommended Response Actions

The recommended response actions are for all the homogenous areas found within the school. The response actions are determined utilizing the decision tree approach for Response Action Determination as described in Section 2.

Homogeneous Area #1-Pipe Fitting Insulation

Response Action 3: The pipe fitting insulation identified within the Room 10 Storage displayed minor damage. Retain an Asbestos Project Designer to prepare a Work Plan for the repair or remove the damaged pipe fitting insulation and retain a Massachusetts certified Abatement Contractor to complete the response action following the Work Plan. Recommended completion date of the work activities: July 2021.

Response Action 7: The remaining pipe fitting insulation located at the school is in generally good condition. Limit the potential for disturbance and continue the O&M Program until major renovations or demolition requires the removal of this material, or until the hazard assessment factors change. It should be noted that asbestos-containing pipe fitting insulation may be located above hard ceilings and/or behind walls. As such, a thorough exploratory inspection should be conducted prior to any renovations that may impact wall or ceiling areas.

Homogeneous Area #2-Canvas Covering on Duct

Response Action 7: The Canvas Covering on Duct located in the Motor Room, Attic above Janitor Closet, and the Teachers Room Closet at the school is in generally good condition. Limit the potential for disturbance and continue the O&M Program until major renovations or demolition requires the removal of this material, or until the hazard assessment factors change

Homogeneous Area #3-1' x 1' Pinhole Ceiling Tile

Response Action 7: The 1' x 1' Pinhole Ceiling Tile located in the Kitchen and Kitchen Office at the school is in generally good condition. Limit the potential for disturbance and continue the O&M Program until major renovations or demolition requires the removal of this material, or until the hazard assessment factors change

Homogeneous Area #4-2' x 4' Fissured Ceiling Tile

Response Action 7: The 2' x 4' Fissured Ceiling Tile located in the Cafeteria at the school is in generally good condition. Limit the potential for disturbance and continue the O&M Program until major renovations or demolition requires the removal of this material, or until the hazard assessment factors change

Section 3
Recommended Response Actions (Continued)

Homogeneous Area #5- 9"x 9" Gray Floor Tile

Response Action 8: The 9" x 9" Gray Floor Tile identified within Rooms 1, 2, 3, 4, 7, 9, 13, 14, 15, 18, and 20 as well as the Nurse Area displayed minor damage. Retain an Asbestos Project Designer to prepare a Work Plan for the removal and replacement of the damaged floor tile and retain a Massachusetts certified Abatement Contractor to complete the response action following the Work Plan. Recommended completion date of the work activities: July 2021.

Response Action 8: The remaining 9" x 9" Gray Floor Tile located at the school is in generally good condition. Please refer to Appendix A which includes the locations and estimated quantities of the 9" x 9" Gray Floor Tile. Continue the O& M Program and manage the material in place until major renovations or demolition requires the removal of this material, or until the hazard assessment factors change.

Homogeneous Area #6- 9"x 9" Tan Floor Tile

Response Action 8: The 9" x 9" Tan Floor Tile identified within the Lobby and Rooms 12 and 16 displayed minor damage. Retain an Asbestos Project Designer to prepare a Work Plan for the removal and replacement of the damaged floor tile and retain a Massachusetts certified Abatement Contractor to complete the response action following the Work Plan. Recommended completion date of the work activities: July 2021.

Response Action 8: The remaining 9" x 9" Tan Floor Tile located at the school is in generally good condition. Please refer to Appendix A which includes the locations and estimated quantities of the 9" x 9" Tan Floor Tile. Continue the O& M Program and manage the material in place until major renovations or demolition requires the removal of this material, or until the hazard assessment factors change.

Homogeneous Area #7- 9"x 9" Green Floor Tile

The 9" x 9" Green Floor Tile identified within the Hallway between Rooms 6 and 7 displayed minor damage. Retain an Asbestos Project Designer to prepare a Work Plan for the removal and replacement of the damaged floor tile and retain a Massachusetts certified Abatement Contractor to complete the response action following the Work Plan. Recommended completion date of the work activities: July 2021.

Section 1
Inspection Report (continued)
Hazard Assessment

Homogeneous Area #8- 9"x 9" Black Floor Tile

Response Action 8: The 9" x 9" Black Floor Tile located throughout the borders of classrooms is in generally good condition. Continue the O& M Program and manage the material in place until major renovations or demolition requires the removal of this material, or until the hazard assessment factors change.

Homogeneous Area #9- 9"x 9" Brown Floor Tile

Response Action 8: The 9" x 9" Brown Floor Tile identified within the Room 10 Storage displayed minor damage. Retain an Asbestos Project Designer to prepare a Work Plan for the removal and replacement of the damaged floor tile and retain a Massachusetts certified Abatement Contractor to complete the response action following the Work Plan. Recommended completion date of the work activities: July 2021.

Response Action 8: The 9" x 9" Brown Floor Tile located within the Kitchen Office is in generally good condition. Continue the O& M Program and manage the material in place until major renovations or demolition requires the removal of this material, or until the hazard assessment factors change.

Homogeneous Area #10- Black Floor Tile Mastic

Response Action 8: The Black Floor Tile Mastic is associated and covered with the gray, tan, brown and green colored 9" Floor Tile. Continue the O & M Program and manage the material in place until major renovations or demolition requires the removal of this material, or until the hazard assessment factors change.

Homogeneous Area #11- Black Residual Floor Tile Mastic

Response Action 8: The Black Residual Floor Tile Mastic is located within the Cafeteria and Rooms 17 and 19 under 12" Non-Asbestos Containing Floor Tile. Continue the O & M Program and manage the material in place until major renovations or demolition requires the removal of this material, or until the hazard assessment factors change.

Homogeneous Area #12- Cementitious Panels Under Windows

Response Action 8: The Cementitious Panels Under the Windows are located within the Principal Office, Teachers Room, Art Room and Rooms 10 and 11 are in generally good condition. Continue the O& M Program and manage the material in place until major renovations or demolition requires the removal of this material, or until the hazard assessment factors change.

Section 1
Inspection Report (continued)
Hazard Assessment

Homogeneous Area #13- Cementitious Panel on Cooler

Response Action 8: The Cementitious Panels on the Cooler within the Kitchen are in generally good condition. Continue the O& M Program and manage the material in place until major renovations or demolition requires the removal of this material, or until the hazard assessment factors change.

Homogeneous Area #14- Interior Window Glazing

Response Action 8: The Interior Window Glazing is located on the window units of the Janitor Office Bathroom, Storage Room M-1 and Electrical Room is in generally good condition. Continue the O& M Program and manage the material in place until major renovations or demolition requires the removal of this material, or until the hazard assessment factors change.

Asbestos-containing Interior Window Glazing is located on the window units of the Janitor Office Bathroom, Storage Room M-1 and Electrical Room at the school. The Interior Window Glazing was observed in generally good condition, non-friable and presents a potential for damage.

SECTION 4

RECORDKEEPING REQUIREMENTS AND RECOMMENDATIONS

Section 4

Recordkeeping Requirements and Recommendations

The AHERA regulations have very specific requirement for the maintenance of records associated with the management of the identified ACBMs in the school. The following is a list of some of the key items that the LEA Designated Person must maintain as part of the package:

- Initial AHERA inspection report and Asbestos Management Plan
- Subsequent 3-year reinspection reports.
- 6-month surveillance reports.
- Documentation for minor and major fiber release episodes. This includes abatement work performed by outside contractors as well as work performed by 16 hour trained maintenance personnel no matter how small.
- Documentation for completion of response actions (i.e. clearance testing, waste shipment records, etc.). This should always include applicable training and certification documentation for the parties involved performing the work activities.
- Labeling of ACBM (friable)
- Yearly notice to parents, teachers and staff.
- Training and medical exams for 16-hour trained personnel. Although training does not require renewal. Medicals are to be performed every year. In addition, 16-hour personnel should be fit tested every six months.
- Two-hour awareness training for staff. Any new workers are required to receive this training at start of employment. Training should include specific review of ACBMs in the building their working in.

The above items are some of the key items, which need to be incorporated into the plan. The following are some recommendations are how best to maintain for easy access and review by outside parties:

- Maintain an update the three- ring binder for the school. Have a duplicated copy, one for administration office and one for the facilities office.
- Create tab sections in the binder. Each section should contain the information above. This will allow for easy review and update.
- Ensure that for every major and minor fiber release episode, that all documentation is received.
- As you updated your file, ensure the school's is updated.

Section 4
Recordkeeping Requirements and Recommendations (continued)

Also, it is also required that if outside contractors enter building perform work that they review areas where asbestos may be present that will be near their work. Have a log at the school for them to sign that they have read and understand. This will protect the school from liability and ensure outside contractors will not disturb asbestos. Finally, periodically review program internally and with your 16-hour persons to ensure compliance.

The pipe fitting insulation identified within the Room 10 Storage displayed minor damage. Retain an Asbestos Project Designer to prepare a Work Plan for the repair or remove the damaged pipe fitting insulation and retain a Massachusetts certified Abatement Contractor to complete the response action following the Work Plan. Recommended completion date of the work activities: July 2021.

The 9" x 9" Gray Floor Tile identified within Rooms 1, 2, 3, 4, 7, 9, 13, 14, 15, 18, and 20 as well as the Nurse Area displayed minor damage. Retain an Asbestos Project Designer to prepare a Work Plan for the removal and replacement of the damaged floor tile and retain a Massachusetts certified Abatement Contractor to complete the response action following the Work Plan. Recommended completion date of the work activities: July 2021.

The 9" x 9" Tan Floor Tile identified within the Lobby and Rooms 12 and 16 displayed minor damage. Retain an Asbestos Project Designer to prepare a Work Plan for the removal and replacement of the damaged floor tile and retain a Massachusetts certified Abatement Contractor to complete the response action following the Work Plan. Recommended completion date of the work activities: July 2021.

The 9" x 9" Brown Floor Tile identified within the Room 10 Storage displayed minor damage. Retain an Asbestos Project Designer to prepare a Work Plan for the removal and replacement of the damaged floor tile and retain a Massachusetts certified Abatement Contractor to complete the response action following the Work Plan. Recommended completion date of the work activities: July 2021.

Affix appropriate asbestos warning labels to entrance to Crawl Space and Attic Area above Janitor Closet.

VERTEX recommends implementing a periodic cleaning schedule with properly trained staff (i.e. 2-Hour Asbestos Awareness) utilizing HEPA-vacuums and wet mopping.

A required six-month periodic surveillance inspection should be scheduled for October 2021.

VERTEX recommends an ACMs Survey be conducted prior to any renovation activities to comply with the EPA Title 40 CFR Part 61, NESHAPs and the Massachusetts Department of Environmental Protection Regulations.

SECTION 5

ESTIMATED RESOURCES REQUIRED TO COMPLETE THE RESPONSE ACTIONS

Section 5
Estimated Resources Required to Complete the Response Actions

This section contains the estimated resources required to complete the abatement activities of the identified damaged ACBMs. These estimates will vary according to competitive bidding, accessibility, location, and condition of ACMs, phasing of work, etc. The cost estimate below does not include abatement contractor mobilization, abatement design and/or project monitoring services.

Estimated Cost to complete the Response Actions at the Hatherly Elementary School in Scituate, Massachusetts:

\$1,500.00*

Cost Estimate Worksheet can be found in Appendix B.

* The estimated cost provided above is developed from current Abatement Contractor Unit pricing. These estimates will vary according to competitive bidding, accessibility, location, and condition of ACMs, phasing of work, etc. In addition, the costs above do not include mobilization of the Abatement Contractor, Abatement Work Plan/Design, Project Monitoring and/or Clearance Testing Services for the completion of the response actions. Please refer for below unit pricing regarding costs for the Contractor Mobilization and Clearance Testing Services:

Abatement Work Plan/Design Specification = \$500-\$2,500.00
Abatement Contactor Mobilization = \$1,500.00-\$2,500.00
Project Monitoring/Clearance Testing = \$520.00-\$600.00/per shift
Transmission Electron Microcopy (TEM) Analysis = \$75.00-\$100.00/sample
Phase Contrast Microscopy (PCM) Analysis = No Charge -\$15.00/sample
Clearance Report Preparation = \$350.00-\$800.00

**The estimated cost provided above does not include costs that may be associated with two-hour asbestos awareness training, OSHA 16-hr Operations and Maintenance Training, and/or the labor to conduct the required six-month surveillance re-inspections. Please refer below for estimated costs that may be associated with the mentioned above:

2-Hour Asbestos Awareness Training = \$75/person
OSHA 16-hr Operations and Maintenance Training = \$300/person
Six-Month Periodic Surveillance Inspection = \$400/inspection

SECTION 6

ESTIMATED RESOURCES REQUIRED FOR THE ABATEMENT OF THE IDENTIFIED ACBMs

Section 6
Estimated Resources Required For Abatement of the Identified ACBMs

This section contains the estimated resources required to perform the removal of identified ACBMs, however EPA recommends the ACBMs to be managed in place if they are not damaged. Alternative abatement costs are estimated using current Abatement Contractor Estimates. These estimates will vary per competitive bidding, accessibility, location, and condition of ACBs, phasing of work, etc. The cost estimate below is a worst-case scenario if all identified ACBMs were to be removed. The cost estimate below does not include abatement contractor mobilization, abatement design and/or project monitoring services.

Estimated Cost for the Removal of ACBMs from the Hatherly Elementary School in Scituate, Massachusetts:

\$350,000.00*

Cost Estimate Worksheet can be found in Appendix C.

*The estimated cost above does not include removal of potentially concealed ACBMs within the interior of the school. In addition, the estimated cost provided above does not include abatement of potential ACBs on the exterior of the site building and/or beyond the AHERA inspection.

** The estimated cost provided above is developed from current Abatement Contractor Unit pricing. These estimates will vary according to competitive bidding, accessibility, location, and condition of ACBs, phasing of work, etc. In addition, the costs above do not include mobilization of the Abatement Contractor, Abatement Work Plan/Design, Project Monitoring and/or Clearance Testing Services for the completion of the response actions. Please refer for below unit pricing regarding costs for the Contractor Mobilization and Clearance Testing Services:

Abatement Work Plan/Design Specification = \$500-\$2,500.00

Abatement Contactor Mobilization = \$1,500.00-\$2,500.00

Project Monitoring/Clearance Testing = \$520.00-\$600.00/per shift

Transmission Electron Microcopy (TEM) Analysis = \$75.00-\$100.00/sample

Phase Contrast Microscopy (PCM) Analysis = No Charge -\$15.00/sample

Clearance Report Preparation = \$350.00-\$800.00

SECTION 7

OPERATIONS AND MAINTENANCE

Section 7
Operations and Maintenance Program

INTRODUCTION

The Scituate Public School District has established an overall asbestos control program that is designed to minimize exposure of all occupants of the school to asbestos fibers located at the Hatherly Elementary School. This Operations and Maintenance (O&M) Plan is an integral part of the overall program. It sets guidelines for the proper in-place management of all assumed and identified asbestos-containing building materials (ACBM) located in the building.

This O&M plan contains the following sections:

- A. A description of the **duties of the LEA Designated Person (DP)**.
- B. A procedure for **notifying** workers, tenants, and other visitors where ACBM are located, and stressing the importance of avoiding disturbing the ACBM in any way.
- C. The detailed description of **O&M Activities**, including:
 - 1. **Emergency procedures** for both major and minor episodes of fiber release;
 - 2. **Periodic surveillance** of ACBM, so that any changes in the condition of ACBM can be noted, assessed, and documented; and
 - 3. Detailed descriptions of **work procedures** for both general maintenance and Asbestos Associated Project Workers, which must be used so that workers can avoid or minimize fiber release when performing activities that may disturb ACBM.
- D. A list of **records** that must be kept to document O&M and abatement activities.
- E. **Training requirements** for the DP, and custodial and maintenance staff.

In general, asbestos represents a health hazard **only** if fibers are breathed into the lungs or, in rare cases, are swallowed. Asbestos-containing materials that are non-friable (i.e. cannot be easily broken or crumbled by hand pressure) are not hazardous as long as they are intact and in good condition. Because friable materials can be easily crumbled or crushed, they are more susceptible to airborne fiber release than are non-friable materials.

It is a policy of the Scituate Public School District that untrained employees and outside contractors **DO NOT** handle, touch or otherwise disturb any material that is asbestos or suspected of containing asbestos. A properly qualified and trained individual must handle any material that is, or may contain asbestos. Non-asbestos materials have been and may be identified by the asbestos coordinator using one or more of the following criteria: (1) lab analysis, (2) results of previous lab analysis, (3) product composition labels, (4) receipts, and so forth. At no time will any employee, student, or outside contractor assume a material to be asbestos-free. An inventory of ACBMs identified from the inspection are presented in Appendix A.

Section 7
Operations and Maintenance Program (Continued)

1. DUTIES OF THE ASBESTOS MANAGEMENT PLAN DESIGNATED PERSON

The DP oversees the implementation and management of the O&M plan. Duties of the DP include (1) notifying building staff, workers, and outside contractors where ACBM is located in the building, (2) assigning workers to tasks involving work that may disturb ACBM, (3) ensuring that abatement and O&M activities are conducted by trained qualified personnel, and (4) keeping records of all asbestos-related activities at the property.

The DP must receive training related to asbestos issues (see “Training Requirements” of this plan).

2. NOTIFICATION

The DP shall ensure that building workers, outside contractors, and tenants are notified of the location, quantity, and physical condition of identified and assumed ACBM that they might disturb. Such notification shall be accomplished by written notice, by personal communication, by posting signs at entrances to mechanical areas, and/or by labeling ACBM. By informing occupants of potential hazards in their vicinity, the notification reduces the possibility that occupants will accidentally disturb ACBM. The notification must stress that persons who disturb ACBM may accidentally release asbestos fibers into the air, and that therefore everyone must avoid disturbing ACBM. This notification will assure compliance with Occupational Health and Safety Administration (OSHA) Regulation 29 CFR Part 1926.1101, which regulates asbestos exposure as it relates to construction work (including building maintenance) and with 29 CFR 1910.1001, which regulates asbestos exposure in general industry (including normal housekeeping).

If asbestos-related construction, abatement, or O&M activities is conducted, the DP shall also notify the following persons about the presence, location, and quantity of ACBM:

- A. Employees of the building, such as maintenance and custodial personnel who will work in or adjacent to areas containing ACBM:
- B. Staff who will occupy areas containing ACBM.
- C. Prospective employers applying for or bidding for work if their employees will be expected to work in or adjacent to areas containing ACBM.
- D. Multiple employers occupying a work-site in the building, any of whose employees will be performing work within or adjacent to areas containing ACBM.

Section 7
Operations and Maintenance Program (Continued)

Before conducting any work in the building that has the potential to impact ACBM, contractors will be required to sign the Contractor's Asbestos Notification and Acknowledgment Form. In addition, all contractors and contractor's employees who work on the site will be required to notify the DP of the presence, location, and quantity of newly discovered ACBM within 24 hours (or sooner if ACBM is disturbed) of the discovery. If any building materials are discovered, the asbestos content of which is unknown, the material shall be presumed to contain asbestos, until the results of sampling and analysis prove otherwise. Appropriate sampling of the material shall be conducted by a Massachusetts Department of Labor and Work Force Development Division of Labor Standards accredited asbestos inspector and analyzed at an appropriately licensed asbestos analytical laboratory.

The DP shall ensure that all required warning signs are posted during abatement and O&M activities during which the release of asbestos fibers into the air is possible. Warning signs shall demarcate all regulated areas and shall bear the following information:

DANGER
ASBESTOS
MAY CAUSE CANCER
CAUSES DAMAGE TO LUNGS
AUTHORIZED PERSONNEL ONLY
RESPIRATORS AND PROTECTIVE
CLOTHING ARE REQUIRED IN THIS AREA

Contractors and in-house personnel who remove ACBM within the site shall label all waste containers that contain ACBM waste in accordance with OSHA and EPA guidelines.

The Massachusetts Department of Environmental Protection (DEP) and the Massachusetts Division of Labor Standards (DLS) will be notified anytime work will impact any quantity of ACBM at the school.

The DP shall ensure that all previously installed ACBM that have been identified in the facility are labeled or identified by signs, as feasible. All ACBM that are friable and accessible, such as TSI located in mechanical areas or below suspended ceilings, will be labeled. Labels shall be attached to or posted in areas where employees, residents, and outside contractors who are likely to be exposed will clearly notice (such as at the entrance to mechanical rooms).

The labels shall bear the following information:

DANGER
CONTAINS ASBESTOS FIBERS
MAY CAUSE CANCER
CAUSES DAMAGE TO LUNGS
DO NOT BREATHE DUST
AVOID CREATING DUST

Posted signs may be used in lieu of labels to indicate the type and location of each ACBM.

Section 7
Operations and Maintenance Program (Continued)

3. OPERATIONS AND MAINTENANCE ACTIVITIES

Operations and maintenance activities include:

- Emergency procedures to be followed in the event of a major or minor episode of fiber release;
- Periodic surveillance of ACBM within at the school building;
- Work procedures associated with planned maintenance activities that may disturb ACBM. Only properly trained personnel under the control and direction of the DP shall conduct operations and maintenance activities.
- Periodic Cleaning Activities

A. Emergency Procedures for Fiber Release Episodes

Fiber release episodes are categorized as *major* (the falling or dislodging of more than 3 square feet or 3 linear feet of friable ACBM), or *minor* (the falling or dislodging of fewer than 3 square feet or 3 linear feet of friable ACBM)

PROCEDURE FOR MAJOR EPISODE

1. Restrict entry into the area.
2. Immediately contact the DP
3. Post sign to prevent anyone from entering the area except persons necessary to perform the response action.
4. Shut off or temporarily modify the air-handling system to prevent the fibers from being distributed to other areas in the building.
5. The DP shall contact an accredited designer of abatement to prepare an abatement plan that specifies the appropriate response actions.
6. The DP shall ensure that only a Massachusetts Certified Asbestos Abatement Contractor conducts the response actions.

Section 7
Operations and Maintenance Program (Continued)

PROCEDURE FOR MINOR EPISODE

1. Thoroughly saturate the debris using all wetting methods necessary.
2. Clean the area using wet wiping techniques followed by vacuuming with a specially equipped High Efficiency Particulate Air (HEPA) vacuum.
3. Place all debris and all contaminated cleaning supplies (mop heads, rags, etc.) into a leak tight container, such as a 6-mil thick polyethylene waste bag, and seal the container. Place the sealed container into a second 6-mil thick polyethylene bag. If labeled waste bags are not used, apply warning label to outside of each bag used.
4. Repair the area of damaged ACBM, as follows:
 - a. Use materials such as asbestos-free spackling, plaster, cement, or insulation; or
 - b. Seal the area with latex paint or an encapsulate; or
 - c. Immediately implement other appropriate response action.

B. Periodic Surveillance

Periodic surveillance of all known and assumed ACBM shall be conducted once every six months. The purpose of the regularly scheduled surveillance is to ensure that any ACBM that are damaged or that have deteriorated are detected in a timely manner. The DP shall use the information from the periodic surveillance in conjunction with ongoing reports from the periodic surveillance in conjunction with ongoing reports from service workers of changes in the condition of the ACBM to take corrective action.

The periodic surveillance consists of a visual inspection of all known and assumed ACBM. Periodic surveillance shall also include a visual and physical evaluation of ACBM in order to determine the degree of damage and to assess the likelihood of future fiber release. The area in the immediate vicinity shall also be examined for potential loose ACBM debris. The DP shall record the cause of the damage.

Only persons who have received at least the minimum asbestos-awareness training (see "Training Requirements", of this plan) shall conduct the periodic surveillance. The results of the surveillance shall be recorded on the periodic surveillance inspection form.

Section 7
Operations and Maintenance Program (Continued)

C. Work Procedures for General Maintenance Personnel

The following work practices shall be prohibited in all circumstances:

- Drilling holes in ACBM;
- Damaging ACBM while moving furniture or other objects;
- Sweeping or dusting floors, ceilings, moldings, or other surfaces in asbestos-contaminated environments;
- Using an ordinary vacuum to clean up asbestos-containing or asbestos contaminated debris (only vacuums equipped with a HEPA filter should be used);
- Removing potentially contaminated ventilation system filters without thoroughly wetting them; and
- Shaking potentially contaminated ventilation system filters.

D. Periodic Cleaning

The following is a general outline to be utilized for the properly trained personnel to conduct the periodic cleaning activities:

- Utilization of disposable rags to wet wipe of all non-porous horizontal surfaces followed by the use of a HEPA-equipped vacuum. Dry sweeping and/or dusting is not permitted to be used to clean the surfaces.
- The collected debris within the lined HEPA-equipped vacuum and disposal rags should be properly disposed of in a labeled asbestos-waste bag accompanied by a Waste Shipment Record for future disposal at a permitted facility that accepts asbestos waste.
- Document the Name of the individual conducting the work activities, location date and time of cleaning for proper recordkeeping. These records should be included within the AMP for the school.

Section 7
Operations and Maintenance Program (Continued)

4. RECORDKEEPING REQUIREMENTS

The building owner shall maintain the following documentation pertaining to ACBM in the facility:

- All data that are relied upon to demonstrate that suspect ACBM do not in fact contain asbestos.
- All data communicated and received that identify the locations and quantities of ACBM.
- All records associated with abatement projects and O&M activities. These documents shall be maintained during the term of ownership. They shall then be transferred to successive owners, in accordance with OSHA Regulation 1926.1101 (n).
- If the owner's employees conduct activities that may potentially cause them to be exposed to asbestos fibers, the owner shall keep the following additional records:
 - All employee exposure-monitoring records pursuant to OSHA Regulation 1926.1101(f).
 - All information relative to medical surveillance of employees pursuant to OSHA Regulation 1926.1101(m). Medical surveillance shall be required only if:
 1. Employees are required to conduct tasks that would result in their exposure to airborne concentrations of asbestos above the OSHA permissible exposure limit (PEL); or
 2. If employees conduct asbestos abatement tasks for more than 30 days per year.
- The owner shall maintain all employee-training records for one year beyond the employee's last date of employment.

5. TRAINING REQUIREMENTS

The extent of asbestos training for facility employees depends on the type of asbestos-related activities they will conduct. For most employees who will require training, a two-hour awareness course will be sufficient but necessary. For employees who are involved in activities where exposure to airborne asbestos fibers is likely, a more comprehensive 16-hour training course is necessary.

Section 7
Operations and Maintenance Program (Continued)

AWARENESS TRAINING

The curriculum shall include instruction in the following:

- The location, quantity, and physical condition of all ACBM located in the facility.
- Recognition of damage, deterioration, and delaminating of ACBM.
- The health effects associated with asbestos exposure, including the relationship between smoking and asbestos in producing lung cancer.
- Procedures to be implemented in the event of a minor or major episode of fiber release.
- The requirements for posting signs and affixing labels, and the meaning of the required legends for such signs and labels.

COMPREHENSIVE WORKER TRAINING

The curriculum shall include instruction in the following:

- All awareness training information described above.
- The nature of operations that could result in exposure to asbestos, and the importance of necessary protective controls and of procedures for minimizing exposure, including:
 - engineering controls
 - work practices,
 - respirators,
 - housekeeping procedures,
 - hygiene facilities,
 - protective clothing,
 - decontamination procedures,
 - emergency procedures,
 - waste disposal procedures and any necessary instruction in the use of these controls and procedures.

Section 7

Operations and Maintenance Program (Continued)

- The purpose, proper use, fitting instructions, and limitations of respirators.
- Medical surveillance program requirements
- The contents of the OSHA standard (1926.1101) regarding asbestos in construction.
- Hands-on-training in the use of respiratory protection, other personal protection measures, and work practices.

Detailed procedures for conducting small-scale, short duration abatement activities, as defined in Appendix A to Subpart E to EPA Regulation 40 CFR Part 763.

APPENDIX A

LOCATIONS OF THE ASBESTOS CONTAINING BUILDING MATERIALS

Appendix A AHERA Inspection May 2021 Locations of the Identified Asbestos-Containing Building Materials Hatherly Elementary School-72 Ann Vinal Road						
Location	ACBM Description	Estimated Quantity	Class	Cond.	Fri.	HA #
<i>First Floor</i>						
A/V Room	Pipe Fitting Insulation	3 Units	TSI	G	Y	5
Storage M-1	Pipe Fitting Insulation	4 Units	TSI	G	Y	5
Hallway by Boiler Room	Pipe Fitting Insulation	4 Units	TSI	G	Y	5
Janitor Office	Pipe Fitting Insulation	3 Units	TSI	G	Y	5
Kitchen Storage	Pipe Fitting Insulation	19 Units	TSI	G	Y	5
Kitchen	Ceramic Floor Tile Adhesive	2,100 ft ²	M	C	N	5
	Pipe Fitting Insulation	5 Units	TSI	G	Y	5
	1' x 1' Ceiling Tile (Pinhole)	2,100 ft ²	M	G	Y	5
Kitchen Office	9" x 9 " Brown Floor Tile	77 ft ²	M	G	N	5
	Black Floor Tile Mastic	77 ft ²	M	C	N	5
	1' x 1' Ceiling Tile (Pinhole)	77 ft ²	M	G	Y	5
Motor Room	Pipe Fitting Insulation	9 Units	TSI	G	Y	5
	Canvas Covering on Duct Insulation	260 ft ²	TSI	G	N	5
Cafeteria	9" x 9 " Tan Floor Tile	3,000 ft ²	M	G	N	6
	Black Floor Tile Mastic	3,000 ft ²	M	C	N	5
	2' x 4' Ceiling Tile (Fissure Pattern)	3,000 ft ²	M	G	Y	5
Room 1	9" x 9 " Gray Floor Tile	900 ft ²	M	MD (6 ft ²)	N	6
	Black Floor Tile Mastic	900 ft ²	M	C	N	5
Room 2	9" x 9 " Gray Floor Tile	900 ft ²	M	MD (3 ft ²)	N	6
	Black Floor Tile Mastic	900 ft ²	M	C	N	5
Room 3	9" x 9 " Gray Floor Tile	900 ft ²	M	MD (2 ft ²)	N	6
	Black Floor Tile Mastic	900 ft ²	M	C	N	5
Room 4	9" x 9 " Gray Floor Tile	900 ft ²	M	MD (4 ft ²)	N	6
	Black Floor Tile Mastic	900 ft ²	M	C	N	5

Appendix A AHERA Inspection May 2021 Locations of the Identified Asbestos-Containing Building Materials Hatherly Elementary School-72 Ann Vinal Road						
Location	ACBM Description	Estimated Quantity	Class	Cond.	Fri.	HA #
First Floor						
Room 4.5	9" x 9 " Gray Floor Tile (Under Carpet)	168 ft ²	M	C	N	5
	Black Floor Tile Mastic	168 ft ²	M	C	N	5
Room 5	9" x 9 " Gray Floor Tile	900 ft ²	M	G	N	5
	Black Floor Tile Mastic	900 ft ²	M	C	N	5
Room 6	9" x 9 " Gray Floor Tile	900 ft ²	M	G	N	5
	Black Floor Tile Mastic	900 ft ²	M	C	N	5
Hallway by Room 6	9" x 9 " Green Floor Tile	256 ft ²	M	MD (4 ft ²)	N	6
	Black Floor Tile Mastic	256 ft ²	M	C	N	5
Room 7	9" x 9 " Gray Floor Tile	900 ft ²	M	MD (8 ft ²)	N	6
	Black Floor Tile Mastic	900 ft ²	M	C	N	5
Room 8	9" x 9 " Gray Floor Tile	900 ft ²	M	G	N	6
	Black Floor Tile Mastic	900 ft ²	M	C	N	5
Room 9	9" x 9 " Gray Floor Tile	900 ft ²	M	MD (2 ft ²)	N	6
	Black Floor Tile Mastic	900 ft ²	M	C	N	5
Attic in Janitor Closet	Pipe Fitting Insulation	7 Units	TSI	G	Y	5
	Canvas Covering on Duct Insulation	160 ft ²	TSI	G	N	5
Lobby	9" x 9 " Tan Floor Tile	780 ft ²	M	MD (20 ft ²)	N	6
	Black Floor Tile Mastic	780 ft ²	M	C	N	5
Main Office	9" x 9 " Gray Floor Tile	300 ft ²	M	G	N	5
	Black Floor Tile Mastic	300 ft ²	M	C	N	5
Nurse Office	9" x 9 " Gray Floor Tile	272 ft ²	M	MD (4 ft ²)	N	6
	Black Floor Tile Mastic	272 ft ²	M	C	N	5
Principal Office	9" x 9 " Gray Floor Tile	120 ft ²	M	G	N	5
	Black Floor Tile Mastic	120 ft ²	M	C	N	5
	Cementitious Panel under Windows	27 ft ²	M	G	N	5

Appendix A AHERA Inspection May 2021 Locations of the Identified Asbestos-Containing Building Materials Hatherly Elementary School-72 Ann Vinal Road						
Location	ACBM Description	Estimated Quantity	Class	Cond.	Fri.	HA #
First Floor						
Rainbow Room (21A)	9" x 9 " Gray Floor Tile	240 ft ²	M	MD (2 ft ²)	N	6
	Black Floor Tile Mastic	240 ft ²	M	C	N	5
Main Hallway	9" x 9 " Tan Floor Tile	1472 ft ²	M	G	N	5
	Black Floor Tile Mastic	1472 ft ²	M	C	N	5
Room 10	9" x 9 " Gray Floor Tile	1026 ft ²	M	G	N	5
	Black Floor Tile Mastic	1026 ft ²	M	G	N	5
	Cementitious Panel under Windows	90 ft ²	M	G	N	5
Room 10 Storage	9" x 9 " Brown Floor Tile	112 ft ²	M	G	N	5
	Black Floor Tile Mastic	112 ft ²	M	G	N	5
	Pipe Fitting Insulation	25 Units	TSI	MD (2)	N	1
Room 10 Boys and Girls Rooms	Pipe Fitting Insulation	4 Units	TSI	G	Y	5
Room 11	9" x 9 " Gray Floor Tile	1026 ft ²	M	G	N	5
	Black Floor Tile Mastic	1026 ft ²	M	G	N	5
	Cementitious Panel under Windows	90 ft ²	M	G	N	5
Hallway by Room 11	9" x 9 " Tan Floor Tile	900 ft ²	M	G	N	5
	Black Floor Tile Mastic	900 ft ²	M	C	N	5
Art Room	9" x 9 " Gray Floor Tile	900 ft ²	M	G	N	5
	Black Floor Tile Mastic	900 ft ²	M	C	N	5
	Cementitious Panel under Windows	102 ft ²	M	G	N	5
Teachers Room	12" x 12" Teal Floor Tile	450 ft ²	M	G	N	5
	9" x 9 " Color Floor Tile (Assumed Under 12")	450 ft ²	M	C	N	5
	Black Floor Tile Mastic	450 ft ²	M	C	N	5
	Cementitious Panel under Windows	36 ft ²	M	G	N	5
Teachers Room Closet	Pipe Fitting Insulation	6 Units	TSI	G	Y	5
	Canvas Covering on Duct Insulation	32 ft ²	TSI	G	N	5

Appendix A AHERA Inspection May 2021 Locations of the Identified Asbestos-Containing Building Materials Hatherly Elementary School-72 Ann Vinal Road						
Location	ACBM Description	Estimated Quantity	Class	Cond.	Fri.	HA #
First Floor						
Room 12	9" x 9 " Tan Floor Tile	1,064 ft ²	M	MD (20 ft ²)	N	6
	Black Floor Tile Mastic	1,064 ft ²	M	C	N	5
Janitor Closet by Gym	Pipe Fitting Insulation	2 Units	TSI	G	Y	5
Room 13	9" x 9 " Gray Floor Tile	900 ft ²	M	MD (2 ft ²)	N	6
	Black Floor Tile Mastic	900 ft ²	M	C	N	5
Room 14	9" x 9 " Gray Floor Tile	900 ft ²	M	MD (2 ft ²)	N	6
	Black Floor Tile Mastic	900 ft ²	M	C	N	5
Room 15	9" x 9 " Gray Floor Tile	900 ft ²	M	MD (2 ft ²)	N	6
	Black Floor Tile Mastic	900 ft ²	M	C	N	5
Room 16	9" x 9 " Tan Floor Tile	900 ft ²	M	MD (2 ft ²)	N	6
	Black Floor Tile Mastic	900 ft ²	M	C	N	5
Room 17	Black Floor Tile Mastic (Under 12" Tile)	900 ft ²	M	C	N	5
Room 18	9" x 9 " Gray Floor Tile	900 ft ²	M	MD (32 ft ²)	N	6
	Black Floor Tile Mastic	900 ft ²	M	C	N	5
Room 19	Black Floor Tile Mastic (Under 12" Tile)	900 ft ²	M	C	N	5
Room 20	9" x 9 " Gray Floor Tile	900 ft ²	M	MD (2 ft ²)	N	6
	Black Floor Tile Mastic	900 ft ²	M	C	N	5
Gymnasium	9" x 9 " Tan Floor Tile	3,000 ft ²	M	G	N	5
	Black Floor Tile Mastic	3,000 ft ²	M	C	N	5
P.E. Office	Pipe Fitting Insulation	16 Units	M	G	Y	5
Pipe Tunnels/Crawl Space	Pipe Fitting Insulation	400 Units	M	NA	Y	6

Hatherly Elementary School
72 Ann Vinal Road
Project # 69699

Locations of ACBM
Page 5

Notes:

ft ² = Square Foot	Cond. = Condition	U = Unknown	NA = Not Accessible
lf = Linear Foot	G = Good	C = Covered	
Unit = Each	MD = Minor Damage	M = Miscellaneous	
Y= Yes	D = Damaged	S= Surfacing	
N = No	Fri. = Friable	TSI = Thermal System Insulation	

HA # = Homogenous Area Hazard Assessment Category

1 = Damaged/Significantly Damaged Thermal System Insulation
2 = Damaged Friable Surfacing ACBM
3 = Significantly Damaged Friable Surfacing ACBM
4 = Damaged or Significantly Damaged Friable Miscellaneous ACBM
5 = ACBM with Potential for Damage
6 = ACBM with Potential for Significant Damage
7 = Any Remaining Friable ACBM or Friable Suspected ACBM
NA = Not Applicable

APPENDIX B

ESTIMATED RESOURCES REQUIRED TO COMPLETE THE RESPONSE ACTIONS

Appendix B
AHERA Inspection May 2021
Estimated Resources to Complete Response Actions
Hatherly Elementary School-72 Ann Vinal Road

Location	ACBM Description	Estimated Quantity	Recommended Response Action	Estimated Cost	Recommended Completion Date of Response Action	Date of Completed Response Action
<i>First Floor</i>						
Room 1	9" x 9 " Gray Floor Tile	6 ft ²	Repair	\$54.00	July 2021	
Room 2	9" x 9 " Gray Floor Tile	3 ft ²	Repair	\$27.00	July 2021	
Room 3	9" x 9 " Gray Floor Tile	2 ft ²	Repair	\$18.00	July 2021	
Room 4	9" x 9 " Gray Floor Tile	4 ft ²	Repair	\$36.00	July 2021	
Hallway by Room 6	9" x 9 " Green Floor Tile	4 ft ²	Repair	\$36.00	July 2021	
Room 7	9" x 9 " Gray Floor Tile	8 ft ²	Repair	\$72.00	July 2021	
Room 9	9" x 9 " Gray Floor Tile	2 ft ²	Repair	\$18.00	July 2021	
Lobby	9" x 9 " Tan Floor Tile	20 ft ²	Repair	\$180.00	July 2021	
Nurse Office	9" x 9 " Gray Floor Tile	4 ft ²	Repair	\$36.00	July 2021	
Rainbow Room (21A)	9" x 9 " Gray Floor Tile	2 ft ²	Repair	\$18.00	July 2021	
Room 10 Storage	Pipe Fitting Insulation	2 Units	Repair	\$50.00	July 2021	
Room 12	9" x 9 " Tan Floor Tile	20 ft ²	Repair	\$180.00	July 2021	
Room 13	9" x 9 " Gray Floor Tile	2 ft ²	Repair	\$18.00	July 2021	
Room 14	9" x 9 " Gray Floor Tile	2 ft ²	Repair	\$18.00	July 2021	
Room 15	9" x 9 " Gray Floor Tile	2 ft ²	Repair	\$18.00	July 2021	
Room 16	9" x 9 " Tan Floor Tile	2 ft ²	Repair	\$18.00	July 2021	
Room 18	9" x 9 " Gray Floor Tile	32 ft ²	Repair	\$288.00	July 2021	
Room 20	9" x 9 " Gray Floor Tile	2 ft ²	Repair	\$18.00	July 2021	

Notes:
ft² = Square Foot
Unit = Each

* The estimated cost provided above is developed from current Abatement Contractor Unit pricing. These estimates will vary according to competitive bidding, accessibility, location, and condition of ACMs, phasing of work, etc. In addition, the costs above do not include mobilization of the Abatement Contractor, Abatement Work Plan/Design, Project Monitoring and/or Clearance Testing Services for the completion of the response actions. Please refer for below unit pricing regarding costs for the Contractor Mobilization and Clearance Testing Services:

Abatement Work Plan/Design Specification = \$500-\$2,500.00
Abatement Contactor Mobilization = \$1,500.00-\$2,500.00
Project Monitoring/Clearance Testing = \$520.00-\$600.00/per shift
Transmission Electron Microcopy (TEM) Analysis = \$75.00-\$100.00/sample
Phase Contrast Microscopy (PCM) Analysis = No Charge -\$15.00/sample
Clearance Report Preparation = \$350.00-\$800.00

**The estimated cost provided above does not include costs that may be associated with two-hour asbestos awareness training, OSHA 16-hr Operations and Maintenance Training, and/or the labor to conduct the required six-month surveillance re-inspections. Please refer below for estimated costs that may be associated with the mentioned above:

2-Hour Asbestos Awareness Training = \$75/person
OSHA 16-hr Operations and Maintenance Training = \$300/person
Six-Month Periodic Surveillance Inspection = \$400/inspection

APPENDIX C

ESTIMATED RESOURCES REQUIRED FOR THE ABATEMENT OF THE IDENTIFIED ACBMs

Appendix C AHERA Inspection May 2021 Estimated Costs for the Removal of the Identified Asbestos-Containing Building Materials Hatherly Elementary School-72 Ann Vinal Road			
Location	ACBM Description	Estimated Quantity	Estimated Cost
<i>First Floor</i>			
A/V Room	Pipe Fitting Insulation	3 Units	\$75.00
Storage M-1	Pipe Fitting Insulation	4 Units	\$100.00
Hallway by Boiler Room	Pipe Fitting Insulation	4 Units	\$100.00
Janitor Office	Pipe Fitting Insulation	3 Units	\$75.00
Kitchen Storage	Pipe Fitting Insulation	19 Units	\$475.00
Kitchen	Ceramic Floor Tile Adhesive	2,100 ft ²	\$21,000.00
	Pipe Fitting Insulation	5 Units	\$125.00
	1' x 1' Ceiling Tile (Pinhole)	2,100 ft ²	\$12,600.00
Kitchen Office	9" x 9 " Brown Floor Tile	77 ft ²	\$693.00
	Black Floor Tile Mastic	77 ft ²	
	1' x 1' Ceiling Tile (Pinhole)	77 ft ²	\$462.00
Motor Room	Pipe Fitting Insulation	9 Units	\$225.00
	Canvas Covering on Duct Insulation	260 ft ²	\$1,560.00
Cafeteria	9" x 9 " Tan Floor Tile	3,000 ft ²	\$27,000.00
	Black Floor Tile Mastic	3,000 ft ²	
	2' x 4' Ceiling Tile (Fissure Pattern)	3,000 ft ²	\$18,000.00
Room 1	9" x 9 " Gray Floor Tile	900 ft ²	\$8,100.00
	Black Floor Tile Mastic	900 ft ²	
Room 2	9" x 9 " Gray Floor Tile	900 ft ²	\$8,100.00
	Black Floor Tile Mastic	900 ft ²	
Room 3	9" x 9 " Gray Floor Tile	900 ft ²	\$8,100.00
	Black Floor Tile Mastic	900 ft ²	
Room 4	9" x 9 " Gray Floor Tile	900 ft ²	\$8,100.00
	Black Floor Tile Mastic	900 ft ²	

Appendix C AHERA Inspection May 2021 Estimated Costs for the Removal of the Identified Asbestos-Containing Building Materials Hatherly Elementary School-72 Ann Vinal Road			
Location	ACBM Description	Estimated Quantity	Estimated Cost
<i>First Floor</i>			
Room 4.5	9" x 9 " Gray Floor Tile (Under Carpet)	168 ft ²	\$1,512.00
	Black Floor Tile Mastic	168 ft ²	
Room 5	9" x 9 " Gray Floor Tile	900 ft ²	\$8,100.00
	Black Floor Tile Mastic	900 ft ²	
Room 6	9" x 9 " Gray Floor Tile	900 ft ²	\$8,100.00
	Black Floor Tile Mastic	900 ft ²	
Hallway by Room 6	9" x 9 " Green Floor Tile	256 ft ²	\$2,304.00
	Black Floor Tile Mastic	256 ft ²	
Room 7	9" x 9 " Gray Floor Tile	900 ft ²	\$8,100.00
	Black Floor Tile Mastic	900 ft ²	
Room 8	9" x 9 " Gray Floor Tile	900 ft ²	\$8,100.00
	Black Floor Tile Mastic	900 ft ²	
Room 9	9" x 9 " Gray Floor Tile	900 ft ²	\$8,100.00
	Black Floor Tile Mastic	900 ft ²	
Attic in Janitor Closet	Pipe Fitting Insulation	7 Units	\$175.00
	Canvas Covering on Duct Insulation	160 ft ²	\$960.00
Lobby	9" x 9 " Tan Floor Tile	780 ft ²	\$7,020.00
	Black Floor Tile Mastic	780 ft ²	
Main Office	9" x 9 " Gray Floor Tile	300 ft ²	\$2,700.00
	Black Floor Tile Mastic	300 ft ²	
Nurse Office	9" x 9 " Gray Floor Tile	272 ft ²	\$2,448.00
	Black Floor Tile Mastic	272 ft ²	
Principal Office	9" x 9 " Gray Floor Tile	120 ft ²	\$1,080.00
	Black Floor Tile Mastic	120 ft ²	
	Cementitious Panel under Windows	27 ft ²	\$270.00

Appendix C AHERA Inspection May 2021 Estimated Costs for the Removal of the Identified Asbestos-Containing Building Materials Hatherly Elementary School-72 Ann Vinal Road			
Location	ACBM Description	Estimated Quantity	Estimated Cost
<i>First Floor</i>			
Rainbow Room (21A)	9" x 9 " Gray Floor Tile	240 ft ²	\$2,160.00
	Black Floor Tile Mastic	240 ft ²	
Main Hallway	9" x 9 " Tan Floor Tile	1472 ft ²	\$13,248.00
	Black Floor Tile Mastic	1472 ft ²	
Room 10	9" x 9 " Gray Floor Tile	1026 ft ²	\$9,234.00
	Black Floor Tile Mastic	1026 ft ²	
	Cementitious Panel under Windows	90 ft ²	\$900.00
Room 10 Storage	9" x 9 " Brown Floor Tile	112 ft ²	\$1,008.00
	Black Floor Tile Mastic	112 ft ²	
	Pipe Fitting Insulation	25 Units	\$625.00
Room 10 Boys and Girls Rooms	Pipe Fitting Insulation	4 Units	\$100.00
Room 11	9" x 9 " Gray Floor Tile	1026 ft ²	\$9,234.00
	Black Floor Tile Mastic	1026 ft ²	
	Cementitious Panel under Windows	90 ft ²	\$900.00
Hallway by Room 11	9" x 9 " Tan Floor Tile	900 ft ²	\$8,100.00
	Black Floor Tile Mastic	900 ft ²	
Art Room	9" x 9 "Gray Floor Tile	900 ft ²	\$8,100.00
	Black Floor Tile Mastic	900 ft ²	
	Cementitious Panel under Windows	102 ft ²	\$1,020.00
Teachers Room	12" x 12" Teal Floor Tile	450 ft ²	\$5,400.00
	9" x 9 " Color Floor Tile (Assumed Under 12")	450 ft ²	
	Black Floor Tile Mastic	450 ft ²	
	Cementitious Panel under Windows	36 ft ²	\$360.00
Teachers Room Closet	Pipe Fitting Insulation	6 Units	\$150.00
	Canvas Covering on Duct Insulation	32 ft ²	\$192.00

Appendix C AHERA Inspection May 2021 Estimated Costs for the Removal of the Identified Asbestos-Containing Building Materials Hatherly Elementary School-72 Ann Vinal Road			
Location	ACBM Description	Estimated Quantity	Estimated Cost
First Floor			
Room 12	9" x 9 " Tan Floor Tile	1,064 ft ²	\$9,576.00
	Black Floor Tile Mastic	1,064 ft ²	
Janitor Closet by Gym	Pipe Fitting Insulation	2 Units	\$0.00
Room 13	9" x 9 " Gray Floor Tile	900 ft ²	\$8,100.00
	Black Floor Tile Mastic	900 ft ²	
Room 14	9" x 9 " Gray Floor Tile	900 ft ²	\$8,100.00
	Black Floor Tile Mastic	900 ft ²	
Room 15	9" x 9 " Gray Floor Tile	900 ft ²	\$8,100.00
	Black Floor Tile Mastic	900 ft ²	
Room 16	9" x 9 " Tan Floor Tile	900 ft ²	\$8,100.00
	Black Floor Tile Mastic	900 ft ²	
Room 17	Black Floor Tile Mastic (Under 12" Tile)	900 ft ²	\$8,100.00
Room 18	9" x 9 " Gray Floor Tile	900 ft ²	\$8,100.00
	Black Floor Tile Mastic	900 ft ²	
Room 19	Black Floor Tile Mastic (Under 12" Tile)	900 ft ²	\$8,100.00
Room 20	9" x 9 " Gray Floor Tile	900 ft ²	\$8,100.00
	Black Floor Tile Mastic	900 ft ²	
Gymnasium	9" x 9 " Tan Floor Tile	3,000 ft ²	\$27,000.00
	Black Floor Tile Mastic	3,000 ft ²	
P.E. Office	Pipe Fitting Insulation	16 Units	\$400.00
Pipe Tunnels/Crawl Space	Pipe Fitting Insulation	400 Units	\$10,000.00

Notes:
ft² = Square Foot
lf = Linear Foot
Unit = Each

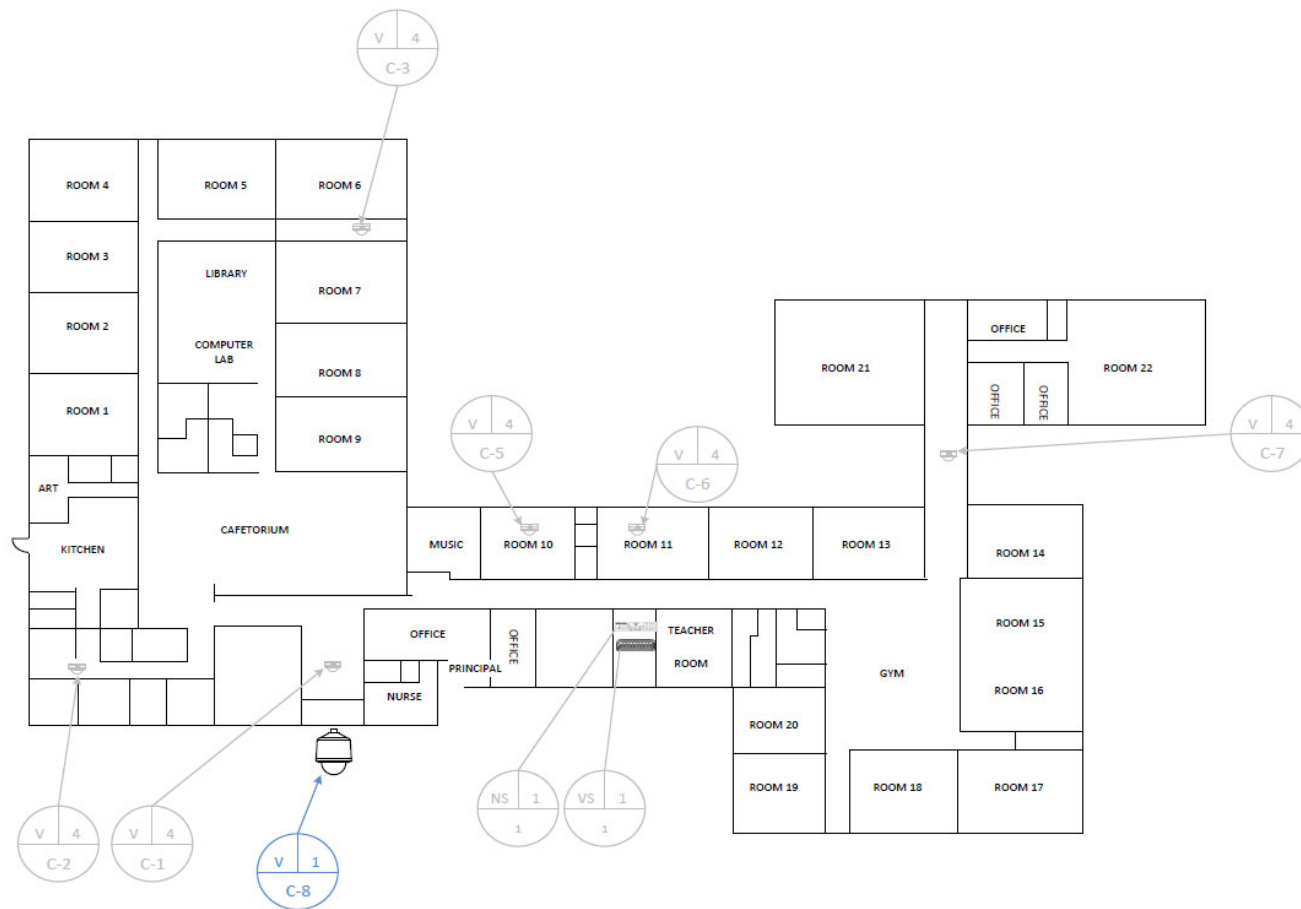
* The estimated cost provided above is developed from current Abatement Contractor Unit pricing. These estimates will vary according to competitive bidding, accessibility, location, and condition of ACMs, phasing of work, etc. The estimated cost for floor tile mastic removal is included within the total cost for the removal of the associated floor tile. In addition, the costs above do not include mobilization of the Abatement Contractor, Abatement Work Plan/Design, Project Monitoring and/or Clearance Testing Services for the completion of the response actions. Please refer for below unit pricing regarding costs for the Contractor Mobilization and Clearance Testing Services:

Abatement Work Plan/Design Specification = \$500-\$2,500.00
Abatement Contactor Mobilization = \$1,500.00-\$2,500.00
Project Monitoring/Clearance Testing = \$520.00-\$600.00/per shift
Transmission Electron Microcopy (TEM) Analysis = \$75.00-\$100.00/sample
Phase Contrast Microscopy (PCM) Analysis = No Charge -\$15.00/sample
Clearance Report Preparation = \$350.00-\$800.00

APPENDIX D

SCHEMATIC

Hatherly Elementary School
72 Ann Vinal Road
Scituate, MA



APPENDIX E
LABORATORY RESULTS



EMSL Analytical, Inc.

5 Constitution Way, Unit A Woburn, MA 01801

Tel/Fax: (781) 933-8411 / (781) 933-8412

<http://www.EMSL.com / bostonlab@emsl.com>

EMSL Order: 132102817

Customer ID: VERT51

Customer PO:

Project ID:

Attention: Jason Mohre

The Vertex Companies, Inc.

398 Libbey Parkway

Weymouth, MA 02189

Phone: (617) 939-3823

Fax: (781) 335-3543

Received Date: 04/20/2021 12:55 PM

Analysis Date: 04/23/2021

Collected Date: 04/20/2021

Project: 69699 - Scituate Public Schools; Hatherly Elementary; 72 Ann Vinal Road

Test Report: Asbestos Analysis of Bulk Materials via EPA 600/R-93/116 Method using Polarized Light Microscopy

Sample	Description	Appearance	Non-Asbestos		Asbestos % Type
			% Fibrous	% Non-Fibrous	
B-0420-1A <small>132102817-0001</small>	Hatherly School; 1st Floor; Kitchen - 1'x1' Ceiling Tile (Pinhole)	White Fibrous Homogeneous	50% Cellulose 40% Min. Wool	7% Non-fibrous (Other)	3% Amosite
B-0420-1B <small>132102817-0002</small>	Hatherly School; 1st Floor; Kitchen - 1'x1' Ceiling Tile (Pinhole)				Positive Stop (Not Analyzed)
B-0420-2A <small>132102817-0003</small>	Hatherly School; 1st Floor; Room 22 - 2'x4' Ceiling Tile (Fissure/Dot) - New	White Fibrous Homogeneous	50% Cellulose 40% Min. Wool	10% Non-fibrous (Other)	None Detected
B-0420-2B <small>132102817-0004</small>	Hatherly School; 1st Floor; Room 22 - 2'x4' Ceiling Tile (Fissure/Dot) - New	White Fibrous Homogeneous	50% Cellulose 40% Min. Wool	10% Non-fibrous (Other)	None Detected
B-0420-3A <small>132102817-0005</small>	Hatherly School; 1st Floor; Room 21 - 2'x4' Ceiling Tile (Speckled/Dot)	White Fibrous Homogeneous	50% Cellulose 40% Min. Wool	10% Non-fibrous (Other)	None Detected
B-0420-3B <small>132102817-0006</small>	Hatherly School; 1st Floor; Hall 21-22 - 2'x4' Ceiling Tile (Speckled/Dot)	White Fibrous Homogeneous	50% Cellulose 40% Min. Wool	10% Non-fibrous (Other)	None Detected

Analyst(s)

Valerica Stanca (5)

Steve Grise, Laboratory Manager
or Other Approved Signatory


EMSL maintains liability limited to cost of analysis. Interpretation and use of test results are the responsibility of the client. This report relates only to the samples reported above, and may not be reproduced, except in full, without written approval by EMSL. EMSL bears no responsibility for sample collection activities or analytical method limitations. The report reflects the samples as received. Results are generated from the field sampling data (sampling volumes and areas, locations, etc.) provided by the client on the Chain of Custody. Samples are within quality control criteria and met method specifications unless otherwise noted. The above analyses were performed in general compliance with Appendix E to Subpart E of 40 CFR (previously EPA 600/M4-82-020 "Interim Method") but augmented with procedures outlined in the 1993 ("final") version of the method. This report must not be used by the client to claim product certification, approval, or endorsement by NVLAP, NIST or any agency of the federal government. Non-friable organically bound materials present a problem matrix and therefore EMSL recommends gravimetric reduction prior to analysis. Unless requested by the client, building materials manufactured with multiple layers (i.e. linoleum, wallboard, etc.) are reported as a single sample. Estimation of uncertainty is available on request.

Samples analyzed by EMSL Analytical, Inc. Woburn, MA NVLAP Lab Code 101147-0, CT PH-0315, MA AA000188, RI AAL-139, VT AL998919, ME LB-0039

Initial report from: 04/23/2021 15:01:54

VERTEX**132102817****Bulk Sampling Log Form**Project Name: SPS - Hetherly Elementary 72 Ann Vngl Project #: 69699 Page: 1 of 1Client: Scituate Public Schools Date: 4/20/21 Inspector: J. Mohr

Building	Floor	Room	Description	Field #	Comments	Fri / Non-Fri
Hetherly School	1	Kitchen	1'x1' Ceiling Tile (pinkish)	B-0420-1A		-
		↓	↓	B-0420-1B	x	-
		Rm 22	2'x4' Ceiling Tile (Fissure/Dust) New	B-0420-2A		-
		↓	↓	B-0420-2B		-
		Rm 21	2'x4' Ceiling Tile (Spuckled/Dust)	B-0420-3A		-
		Hall 21-22	↓	B-0420-3B		-

Delivered By	Date	#Samples	Received By	Date	Time	#Samples
	4/20/21	6				

72-hr TAT
 Phm-Asbestos Bulk
 positive STOP

REC'D RHB 1255 W1
 EMSL-BOSTON APR 20 2021

CLIENT: SCITUATE PUBLIC SCHOOLS
600 CHIEF JUSTICE CUSHING HIGHWAY
SCITUATE, MA 02066
LOCATION: HATHERLY ELEMENTARY SCHOOL
72 ANN VINAL ROAD
SCITUATE, MASSACHUSETTS

ANALYTICAL RESULTS OF BULK SAMPLES

PROJECT: 13.00298 - 392518
DATE RECEIVED: 08/26/13
ANALYZED: 08/26/13 TO 08/29/13
COLLECTED BY: COVINO
COLLECTED: 08/21/13 TO 08/22/13

LAB ID	SAMPLE DESCRIPTION	COLOR	ANALYTICAL RESULTS
--------	--------------------	-------	--------------------

392518	FIELD ID: 1A MATERIAL: CANVAS COVERING ON BOILER BREECHING LOCATION: BOILER ROOM	GY	NO ASBESTOS DETECTED FIBROUS GLASS NONFIBROUS MATERIAL
--------	--	----	--

392519	FIELD ID: 1B MATERIAL: CANVAS COVERING ON BOILER BREECHING LOCATION: BOILER ROOM	GY	NO ASBESTOS DETECTED FIBROUS GLASS NONFIBROUS MATERIAL
--------	--	----	--

392520	FIELD ID: 1C MATERIAL: CANVAS COVERING ON BOILER BREECHING LOCATION: BOILER ROOM	GY	NO ASBESTOS DETECTED FIBROUS GLASS NONFIBROUS MATERIAL
--------	--	----	--

392521	FIELD ID: 2A MATERIAL: CANVAS COVERING ON FIBERGLASS PIPE INSULATION LOCATION: BOILER ROOM, CRAWLSPACE	TN	NO ASBESTOS DETECTED CELLULOSE NONFIBROUS MATERIAL
--------	---	----	--

392522	FIELD ID: 2B MATERIAL: CANVAS COVERING ON FIBERGLASS PIPE INSULATION LOCATION: BOILER ROOM, CRAWLSPACE	TN	NO ASBESTOS DETECTED CELLULOSE NONFIBROUS MATERIAL
--------	---	----	--

392523	FIELD ID: 2C MATERIAL: CANVAS COVERING ON FIBERGLASS PIPE INSULATION LOCATION: BOILER ROOM, CRAWLSPACE	TN	NO ASBESTOS DETECTED CELLULOSE NONFIBROUS MATERIAL
--------	---	----	--

LAB ID SAMPLE DESCRIPTION

392524	FIELD ID: 3A	MATERIAL: 1" PIPE FITTING INSULATION	WH	ASBESTOS - CHRYSOTILE	20 %
			N	ASBESTOS - AMOSITE	15 %
				FIBROUS GLASS	10 %
				NONFIBROUS MATERIAL	55 %

392525	FIELD ID: 3B	MATERIAL: 1" PIPE FITTING INSULATION	N/A	SAMPLE NOT ANALYZED	
		LOCATION: BOILER ROOM, CRAWLSPACE	N/A		

392526	FIELD ID: 3C	MATERIAL: 1" PIPE FITTING INSULATION	N/A	SAMPLE NOT ANALYZED	
		LOCATION: KITCHEN	N/A		

392527	FIELD ID: 3D	MATERIAL: 1" PIPE FITTING INSULATION	N/A	SAMPLE NOT ANALYZED	
		LOCATION: E-2, ATTIC	N/A		

392528	FIELD ID: 3E	MATERIAL: 1" PIPE FITTING INSULATION	N/A	SAMPLE NOT ANALYZED	
		LOCATION: E-2, ATTIC	N/A		

392529	FIELD ID: 3F	MATERIAL: 1" PIPE FITTING INSULATION	N/A	SAMPLE NOT ANALYZED	
		LOCATION: E-2, ATTIC	N/A		

392530	FIELD ID: 3G	MATERIAL: 1" PIPE FITTING INSULATION	N/A	SAMPLE NOT ANALYZED	
		LOCATION: OFFICE, CLOSET	N/A		

392531	FIELD ID: 3H	MATERIAL: 1" PIPE FITTING INSULATION	N/A	SAMPLE NOT ANALYZED	
		LOCATION: ROOM 10, STORAGE	N/A		

392532	FIELD ID: 3I	MATERIAL: 1" PIPE FITTING INSULATION	N/A	SAMPLE NOT ANALYZED	
		LOCATION: PHYS. ED. OFFICE	N/A		

REPORT ID: 10775 PROJECT: 13.00298 - 392518 SAMPLE LAB IDS: 392518 TO 392668, NO. OF SAMPLES: 151 PAGE 3 OF 19

LAB ID	SAMPLE DESCRIPTION	COLOR	LAYERED	ANALYTICAL RESULTS
392533	FIELD ID: 4A MATERIAL: 6" PIPE FITTING INSULATION LOCATION: BOILER ROOM, CRAWLSPACE	WH	N	ASBESTOS - CHRYSOTILE 25 % ASBESTOS - AMOSITE 07 % NONFIBROUS MATERIAL 60 %
392534	FIELD ID: 4B MATERIAL: 6" PIPE FITTING INSULATION LOCATION: BOILER ROOM, CRAWLSPACE	N/A	N/A	SAMPLE NOT ANALYZED
392535	FIELD ID: 4C MATERIAL: 6" PIPE FITTING INSULATION LOCATION: BOILER ROOM, CRAWLSPACE	N/A	N/A	SAMPLE NOT ANALYZED
392536	FIELD ID: 4D MATERIAL: 6" PIPE FITTING INSULATION LOCATION: E-2, ATTIC	N/A	N/A	SAMPLE NOT ANALYZED
392537	FIELD ID: 4E MATERIAL: 6" PIPE FITTING INSULATION LOCATION: E-2, ATTIC	N/A	N/A	SAMPLE NOT ANALYZED
392538	FIELD ID: 5A MATERIAL: DUCT VIBRATION CLOTH LOCATION: BOILER ROOM	BK/GY	Y	NO ASBESTOS DETECTED FIBROUS GLASS 60 % NONFIBROUS MATERIAL 40 %
392539	FIELD ID: 5B MATERIAL: DUCT VIBRATION CLOTH LOCATION: BOILER ROOM	BK/GY	Y	NO ASBESTOS DETECTED FIBROUS GLASS 60 % NONFIBROUS MATERIAL 40 %
392540	FIELD ID: 5C MATERIAL: DUCT VIBRATION CLOTH LOCATION: MUSIC ROOM	BK/GY	Y	NO ASBESTOS DETECTED FIBROUS GLASS 25 % NONFIBROUS MATERIAL 75 %

LAB ID	SAMPLE DESCRIPTION	COLOR	ANALYTICAL RESULTS
392541	FIELD ID: 6A MATERIAL: DUCT STICK PIN ADHESIVE LOCATION: BOILER ROOM	TN	ASBESTOS - CHRYSOTILE 30 % NONFIBROUS MATERIAL 70 %
392542	FIELD ID: 6B MATERIAL: DUCT STICK PIN ADHESIVE LOCATION: BOILER ROOM	N/A	SAMPLE NOT ANALYZED
392543	FIELD ID: 6C MATERIAL: DUCT STICK PIN ADHESIVE LOCATION: BOILER ROOM	N/A	SAMPLE NOT ANALYZED
392544	FIELD ID: 7A MATERIAL: ROUGH PLASTER CEILING, BASE COAT LOCATION: BOILER ROOM	GY	NO ASBESTOS DETECTED NONFIBROUS MATERIAL 100 %
392545	FIELD ID: 7B MATERIAL: ROUGH PLASTER CEILING, BASE COAT LOCATION: BOILER ROOM	GY	NO ASBESTOS DETECTED NONFIBROUS MATERIAL 100 %
392546	FIELD ID: 7C MATERIAL: ROUGH PLASTER CEILING, BASE COAT LOCATION: BOILER ROOM	GY	NO ASBESTOS DETECTED NONFIBROUS MATERIAL 100 %
392547	FIELD ID: 7D MATERIAL: ROUGH PLASTER CEILING, BASE COAT LOCATION: INCINERATOR ROOM	GY	NO ASBESTOS DETECTED NONFIBROUS MATERIAL 100 %
392548	FIELD ID: 7E MATERIAL: ROUGH PLASTER CEILING, BASE COAT LOCATION: INCINERATOR ROOM	GY	NO ASBESTOS DETECTED NONFIBROUS MATERIAL 100 %
392549	FIELD ID: 8A MATERIAL: ROUGH PLASTER CEILING, SKIM COAT LOCATION: BOILER ROOM	W/TN	NO ASBESTOS DETECTED NONFIBROUS MATERIAL 100 %

LAB ID	SAMPLE DESCRIPTION	COLOR	LAYERED	ANALYTICAL RESULTS
--------	--------------------	-------	---------	--------------------

392550	FIELD ID: 8B MATERIAL: ROUGH PLASTER CEILING, SKIM COAT LOCATION: BOILER ROOM	WH/TN	Y	NO ASBESTOS DETECTED NONFIBROUS MATERIAL 100 %
--------	---	-------	---	--

392551	FIELD ID: 8C MATERIAL: ROUGH PLASTER CEILING, SKIM COAT LOCATION: BOILER ROOM	WH/TN	Y	NO ASBESTOS DETECTED NONFIBROUS MATERIAL 100 %
--------	---	-------	---	--

392552	FIELD ID: 8D MATERIAL: ROUGH PLASTER CEILING, SKIM COAT LOCATION: INCINERATOR ROOM	WH/TN	Y	NO ASBESTOS DETECTED NONFIBROUS MATERIAL 100 %
--------	--	-------	---	--

392553	FIELD ID: 8E MATERIAL: ROUGH PLASTER CEILING, SKIM COAT LOCATION: INCINERATOR ROOM	WH/TN	Y	NO ASBESTOS DETECTED NONFIBROUS MATERIAL 100 %
--------	--	-------	---	--

392554	FIELD ID: 9A MATERIAL: INTERIOR PERIMETER WINDOW GLAZING COMPOUND LOCATION: JANITOR'S OFFICE, BATHROOM	TN	N	ASBESTOS - CHRYSOTILE 06 % NONFIBROUS MATERIAL 94 %
--------	---	----	---	--

392555	FIELD ID: 9B MATERIAL: INTERIOR PERIMETER WINDOW GLAZING COMPOUND LOCATION: STORAGE M-1	N/A	N/A	SAMPLE NOT ANALYZED
--------	--	-----	-----	---------------------

392556	FIELD ID: 10A MATERIAL: ABANDONED GENERATOR EXHAUST PIPE INSULATION LOCATION: HALLWAY, BY GEN. ROOM	WH	N	ASBESTOS - CHRYSOTILE 60 % FIBROUS GLASS 07 % NONFIBROUS MATERIAL 33 %
--------	--	----	---	--

392557	FIELD ID: 10B MATERIAL: ABANDONED GENERATOR EXHAUST PIPE INSULATION LOCATION: HALLWAY, BY GEN. ROOM	N/A	N/A	SAMPLE NOT ANALYZED
--------	--	-----	-----	---------------------

392558	FIELD ID: 10C MATERIAL: ABANDONED GENERATOR EXHAUST PIPE INSULATION LOCATION: KITCHEN STORAGE	N/A	N/A	SAMPLE NOT ANALYZED
--------	--	-----	-----	---------------------

REPORT ID: 10775 PROJECT: 13.00298 - 392518 SAMPLE LAB IDS: 392518 TO 392668, NO. OF SAMPLES: 151 PAGE 6 OF 19

LAB ID	SAMPLE DESCRIPTION	COLOR	LAYERED	ANALYTICAL RESULTS
392559	FIELD ID: 11A MATERIAL: TRANSITE WINDOW SILL LOCATION: JANITOR'S OFFICE, BATH	GY	N	NO ASBESTOS DETECTED NONFIBROUS MATERIAL 100 %
392560	FIELD ID: 11B MATERIAL: TRANSITE WINDOW SILL LOCATION: ELEC. ROOM	GY	N	NO ASBESTOS DETECTED NONFIBROUS MATERIAL 100 %
392561	FIELD ID: 12A MATERIAL: WALK-IN COOLERS CEILING COATING LOCATION: KITCHEN	WH	N	NO ASBESTOS DETECTED NONFIBROUS MATERIAL 100 %
392562	FIELD ID: 12B MATERIAL: WALK-IN COOLERS CEILING COATING LOCATION: KITCHEN	WH	N	NO ASBESTOS DETECTED NONFIBROUS MATERIAL 100 %
392563	FIELD ID: 13A MATERIAL: WALK-IN COOLERS CEMENTITIOUS WALL COVERING LOCATION: KITCHEN	GY	N	ASBESTOS - CHRYSOTILE NONFIBROUS MATERIAL 05 % 95 %
392564	FIELD ID: 13B MATERIAL: WALK-IN COOLERS CEMENTITIOUS WALL COVERING LOCATION: KITCHEN	N/A	N/A	SAMPLE NOT ANALYZED
392565	FIELD ID: 14A MATERIAL: 1' X 1' FISSURED SPLINE CEILING TILE LOCATION: KITCHEN, BATHROOM	GY/WH	Y	NO ASBESTOS DETECTED FIBROUS GLASS 75 % 25 %
392566	FIELD ID: 14B MATERIAL: 1' X 1' FISSURED SPLINE CEILING TILE LOCATION: KITCHEN, BATHROOM	GY/WH	Y	NO ASBESTOS DETECTED FIBROUS GLASS 75 % 25 %

LAB ID SAMPLE DESCRIPTION COLOR LAYERED ANALYTICAL RESULTS

392567 FIELD ID: 14C MATERIAL: 1' X 1' FISSURED SPLINE CEILING TILE GY/WH NO ASBESTOS DETECTED 75 %
 LOCATION: SPEECH ROOM
 NONFIBROUS MATERIAL 25 %

392568 FIELD ID: 15A MATERIAL: 1' X 1' PINHOLE SPLINE CEILING TILE GY/WH ASBESTOS - CHRYSOTILE 06 %
 FIBROUS GLASS 70 %
 NONFIBROUS MATERIAL 24 %
 LOCATION: KITCHEN, HALLWAY

392569 FIELD ID: 15B MATERIAL: 1' X 1' PINHOLE SPLINE CEILING TILE N/A SAMPLE NOT ANALYZED
 LOCATION: KITCHEN

392570 FIELD ID: 15C MATERIAL: 1' X 1' PINHOLE SPLINE CEILING TILE N/A SAMPLE NOT ANALYZED
 LOCATION: KITCHEN

392571 FIELD ID: 16A MATERIAL: 9" X 9" BROWN FLOOR TILE BR ASBESTOS - CHRYSOTILE 10 %
 NONFIBROUS MATERIAL 90 %
 LOCATION: KITCHEN, OFFICE

392572 FIELD ID: 16B MATERIAL: 9" X 9" BROWN FLOOR TILE N/A SAMPLE NOT ANALYZED
 LOCATION: ROOM 10, CLOSET

392573 FIELD ID: 16C MATERIAL: 9" X 9" BROWN FLOOR TILE N/A SAMPLE NOT ANALYZED
 LOCATION: ROOM 10, CLOSET

392574 FIELD ID: 17A MATERIAL: 9" X 9" BROWN FLOOR TILE BK ASBESTOS - CHRYSOTILE 10 %
 NONFIBROUS MATERIAL 90 %
 LOCATION: KITCHEN, OFFICE

392575 FIELD ID: 17B MATERIAL: 9" X 9" BROWN FLOOR TILE MASTIC N/A SAMPLE NOT ANALYZED
 LOCATION: ROOM 10, CLOSET

LAB ID	SAMPLE DESCRIPTION	COLOR	ANALYTICAL RESULTS
392576	FIELD ID: 17C MATERIAL: 9" X 9" BROWN FLOOR TILE MASTIC LOCATION: ROOM 10, CLOSET	N/A	SAMPLE NOT ANALYZED
392577	FIELD ID: 18A MATERIAL: 4" WALL BASE LOCATION: KITCHEN, OFFICE	BK	NO ASBESTOS DETECTED
		N	NONFIBROUS MATERIAL
			100 %
392578	FIELD ID: 18B MATERIAL: 4" WALL BASE LOCATION: ROOM 21B, CLOSET	BK	NO ASBESTOS DETECTED
		N	NONFIBROUS MATERIAL
			100 %
392579	FIELD ID: 18C MATERIAL: 4" WALL BASE LOCATION: ROOM 15	BK	NO ASBESTOS DETECTED
		N	NONFIBROUS MATERIAL
			100 %
392580	FIELD ID: 19A MATERIAL: 4" WALL BASE ADHESIVE LOCATION: KITCHEN OFFICE	BK	NO ASBESTOS DETECTED
		N	NONFIBROUS MATERIAL
			100 %
392581	FIELD ID: 19B MATERIAL: 4" WALL BASE ADHESIVE LOCATION: ROOM 21B, CLOSET	BK	NO ASBESTOS DETECTED
		N	NONFIBROUS MATERIAL
			100 %
392582	FIELD ID: 19C MATERIAL: 4" WALL BASE ADHESIVE LOCATION: ROOM 15	BK	NO ASBESTOS DETECTED
		N	NONFIBROUS MATERIAL
			100 %
392583	FIELD ID: 20A MATERIAL: 12" X 12" GREEN FLOOR TILE LOCATION: CAFETERIA	GK	NO ASBESTOS DETECTED
		N	NONFIBROUS MATERIAL
			100 %
392584	FIELD ID: 20B MATERIAL: 12" X 12" GREEN FLOOR TILE LOCATION: CAFETERIA	GK	NO ASBESTOS DETECTED
		N	NONFIBROUS MATERIAL
			100 %

LAB ID	SAMPLE DESCRIPTION	COLOR	LAYERED	ANALYTICAL RESULTS
392585	FIELD ID: 20C MATERIAL: 12" X 12" GREEN FLOOR TILE LOCATION: CAFETERIA	GN	N	NO ASBESTOS DETECTED NONFIBROUS MATERIAL 100 %
392586	FIELD ID: 21A MATERIAL: 12" X 12" GREEN FLOOR TILE MASTIC LOCATION: CAFETERIA	BK	N	ASBESTOS - CHRYSOTILE NONFIBROUS MATERIAL 05 % 95 %
392587	FIELD ID: 21B MATERIAL: 12" X 12" GREEN FLOOR TILE MASTIC LOCATION: CAFETERIA	N/A	N/A	SAMPLE NOT ANALYZED
392588	FIELD ID: 21C MATERIAL: 12" X 12" GREEN FLOOR TILE MASTIC LOCATION: CAFETERIA	N/A	N/A	SAMPLE NOT ANALYZED
392589	FIELD ID: 22A MATERIAL: 2' X 4' FISSURED CEILING TILE LOCATION: CAFETERIA	GY/WH	Y	ASBESTOS - CHRYSOTILE FIBROUS GLASS 03 % 70 % 27 %
392590	FIELD ID: 22B MATERIAL: 2' X 4' FISSURED CEILING TILE LOCATION: CAFETERIA	N/A	N/A	SAMPLE NOT ANALYZED
392591	FIELD ID: 22C MATERIAL: 2' X 4' FISSURED CEILING TILE LOCATION: CAFETERIA	N/A	N/A	SAMPLE NOT ANALYZED
392592	FIELD ID: 23A MATERIAL: PLASTER WALL, BASE COAT LOCATION: CAFETERIA	GY	N	NO ASBESTOS DETECTED NONFIBROUS MATERIAL 100 %
392593	FIELD ID: 23B MATERIAL: PLASTER WALL, BASE COAT LOCATION: CAFETERIA	GY	N	NO ASBESTOS DETECTED NONFIBROUS MATERIAL 100 %

LAB ID	SAMPLE DESCRIPTION	COLOR	LAYERED	ANALYTICAL RESULTS
392594	FIELD ID: 23C MATERIAL: PLASTER WALL, BASE COAT LOCATION: CAFETERIA	GY	N	NO ASBESTOS DETECTED NONFIBROUS MATERIAL 100 %
392595	FIELD ID: 24A MATERIAL: PLASTER WALL, SKIM COAT LOCATION: CAFETERIA	WH	N	NO ASBESTOS DETECTED NONFIBROUS MATERIAL 100 %
392596	FIELD ID: 24B MATERIAL: PLASTER WALL, SKIM COAT LOCATION: CAFETERIA	WH	N	NO ASBESTOS DETECTED NONFIBROUS MATERIAL 100 %
392597	FIELD ID: 24C MATERIAL: PLASTER WALL, SKIM COAT LOCATION: CAFETERIA	WH	N	NO ASBESTOS DETECTED NONFIBROUS MATERIAL 100 %
392598	FIELD ID: 25A MATERIAL: CANVAS COVERING OVER FIBERGLASS DUCT INSULATION LOCATION: MUSIC ROOM	GY/TN	Y	ASBESTOS - CHRYSOTILE 30 % ASBESTOS - AMOSITE 15 % NONFIBROUS MATERIAL 55 %
392599	FIELD ID: 25B MATERIAL: CANVAS COVERING OVER FIBERGLASS DUCT INSULATION LOCATION: MUSIC ROOM	N/A	N/A	SAMPLE NOT ANALYZED
392600	FIELD ID: 25C MATERIAL: CANVAS COVERING OVER FIBERGLASS DUCT INSULATION LOCATION: MUSIC ROOM	N/A	N/A	SAMPLE NOT ANALYZED
392601	FIELD ID: 26A MATERIAL: 4' X 8' TECTUM CEILING TILES LOCATION: ROOM 1	MU	Y	NO ASBESTOS DETECTED CELLULOSE 60 % NONFIBROUS MATERIAL 40 %

LAB ID	SAMPLE DESCRIPTION	COLOR	LAYERED	ANALYTICAL RESULTS
392602	FIELD ID: 26B MATERIAL: 4' X 8' TECTUM CEILING TILES LOCATION: ROOM 4	MU	Y	NO ASBESTOS DETECTED CELLULOSE NONFIBROUS MATERIAL 60 % 40 %
392603	FIELD ID: 26C MATERIAL: 4' X 8' TECTUM CEILING TILES LOCATION: OFFICE	MU	Y	NO ASBESTOS DETECTED CELLULOSE NONFIBROUS MATERIAL 65 % 35 %
392604	FIELD ID: 27A MATERIAL: 9" X 9" BLACK FLOOR TILE LOCATION: ROOM 1	BK	N	ASBESTOS - CHRYSOTILE 13 % NONFIBROUS MATERIAL 87 %
392605	FIELD ID: 27B MATERIAL: 9" X 9" BLACK FLOOR TILE LOCATION: ROOM 4	N/A	N/A	SAMPLE NOT ANALYZED
392606	FIELD ID: 27C MATERIAL: 9" X 9" BLACK FLOOR TILE LOCATION: OFFICE	N/A	N/A	SAMPLE NOT ANALYZED
392607	FIELD ID: 28A MATERIAL: 9" X 9" BLACK FLOOR TILE MASTIC LOCATION: ROOM 1	BK	N	ASBESTOS - CHRYSOTILE 10 % NONFIBROUS MATERIAL 90 %
392608	FIELD ID: 28B MATERIAL: 9" X 9" BLACK FLOOR TILE MASTIC LOCATION: ROOM 4	N/A	N/A	SAMPLE NOT ANALYZED
392609	FIELD ID: 28C MATERIAL: 9" X 9" BLACK FLOOR TILE MASTIC LOCATION: OFFICE	N/A	N/A	SAMPLE NOT ANALYZED
392610	FIELD ID: 29A MATERIAL: 9" X 9" TAN FLOOR TILE LOCATION: ROOM 1	TN	N	ASBESTOS - CHRYSOTILE 12 % NONFIBROUS MATERIAL 88 %

LAB ID	SAMPLE DESCRIPTION	COLOR	ANALYTICAL RESULTS
392611	FIELD ID: 29B MATERIAL: 9" X 9" TAN FLOOR TILE LOCATION: ROOM 4	N/A	SAMPLE NOT ANALYZED
392612	FIELD ID: 29C MATERIAL: 9" X 9" TAN FLOOR TILE LOCATION: OFFICE	N/A	SAMPLE NOT ANALYZED
392613	FIELD ID: 30A MATERIAL: 9" X 9" TAN FLOOR TILE MASTIC LOCATION: ROOM 1	BK	ASBESTOS - CHRYSOTILE 12 % NONFIBROUS MATERIAL 88 %
392614	FIELD ID: 30B MATERIAL: 9" X 9" TAN FLOOR TILE MASTIC LOCATION: ROOM 1	N/A	SAMPLE NOT ANALYZED
392615	FIELD ID: 30C MATERIAL: 9" X 9" TAN FLOOR TILE MASTIC LOCATION: OFFICE	N/A	SAMPLE NOT ANALYZED
392616	FIELD ID: 31A MATERIAL: PINK SINK BASIN COATING LOCATION: ROOM 1	PI	NO ASBESTOS DETECTED NONFIBROUS MATERIAL 100 %
392617	FIELD ID: 31B MATERIAL: PINK SINK BASIN COATING LOCATION: ROOM 4	PI	NO ASBESTOS DETECTED NONFIBROUS MATERIAL 100 %
392618	FIELD ID: 31C MATERIAL: PINK SINK BASIN COATING LOCATION: ROOM 21B	PI	NO ASBESTOS DETECTED NONFIBROUS MATERIAL 100 %
392619	FIELD ID: 32A MATERIAL: MOUNTED CORK BOARD LOCATION: ROOM 1	WHTN	NO ASBESTOS DETECTED CELLULOSE 10 % NONFIBROUS MATERIAL 90 %

LAB ID	SAMPLE DESCRIPTION	COLOR	ANALYTICAL RESULTS
--------	--------------------	-------	--------------------

392620	FIELD ID: 32B MATERIAL: MOUNTED CORK BOARD LOCATION: ROOM 4	TN Y	NO ASBESTOS DETECTED CELLULOSE NONFIBROUS MATERIAL 13 % 87 %
--------	---	---------	--

392621	FIELD ID: 32C MATERIAL: MOUNTED CORK BOARD LOCATION: ROOM 21B	WH/TN Y	NO ASBESTOS DETECTED CELLULOSE NONFIBROUS MATERIAL 12 % 88 %
--------	---	------------	--

392622	FIELD ID: 33A MATERIAL: GOLD CARPET ADHESIVE LOCATION: SPEECH ROOM	TN N	NO ASBESTOS DETECTED NONFIBROUS MATERIAL 100 %
--------	--	---------	--

392623	FIELD ID: 33B MATERIAL: GOLD CARPET ADHESIVE LOCATION: LIBRARY	TN N	NO ASBESTOS DETECTED NONFIBROUS MATERIAL 100 %
--------	--	---------	--

392624	FIELD ID: 33C MATERIAL: GOLD CARPET ADHESIVE LOCATION: LIBRARY	TN N	NO ASBESTOS DETECTED NONFIBROUS MATERIAL 100 %
--------	--	---------	--

392625	FIELD ID: 34A MATERIAL: 9" X 9" GREEN FLOOR TILE LOCATION: HALL, @ ROOM 6	GN N	ASBESTOS - CHRYSOTILE NONFIBROUS MATERIAL 10 % 90 %
--------	---	---------	--

392626	FIELD ID: 34B MATERIAL: 9" X 9" GREEN FLOOR TILE LOCATION: HALL, @ ROOM 18	N/A N/A	SAMPLE NOT ANALYZED
--------	--	------------	---------------------

392627	FIELD ID: 34C MATERIAL: 9" X 9" GREEN FLOOR TILE LOCATION: HALL, @ ROOM 18	N/A N/A	SAMPLE NOT ANALYZED
--------	--	------------	---------------------

392628	FIELD ID: 35A MATERIAL: 9" X 9" GREEN FLOOR TILE MASTIC LOCATION: HALL, @ ROOM 6	BK N	ASBESTOS - CHRYSOTILE NONFIBROUS MATERIAL 12 % 88 %
--------	--	---------	--

REPORT ID: 10775 PROJECT: 13.00298 - 392518 SAMPLE LAB IDS: 392518 TO 392668, NO. OF SAMPLES: 151 PAGE 14 OF 19

LAB ID	SAMPLE DESCRIPTION	COLOR	LAYERED	ANALYTICAL RESULTS
392629	FIELD ID: 35B MATERIAL: 9" X 9" GREEN FLOOR TILE MASTIC LOCATION: HALL, @ ROOM 18	N/A	N/A	SAMPLE NOT ANALYZED
392630	FIELD ID: 35C MATERIAL: 9" X 9" GREEN FLOOR TILE MASTIC LOCATION: HALL, @ ROOM 18	N/A	N/A	SAMPLE NOT ANALYZED
392631	FIELD ID: 36A MATERIAL: SMOOTH PLASTER CEILING, BASE COAT LOCATION: BOYS ROOM	GY	N	NO ASBESTOS DETECTED NONFIBROUS MATERIAL
100 %				
392632	FIELD ID: 36B MATERIAL: SMOOTH PLASTER CEILING, BASE COAT LOCATION: GIRL'S ROOM	GY	N	NO ASBESTOS DETECTED NONFIBROUS MATERIAL
100 %				
392633	FIELD ID: 36C MATERIAL: SMOOTH PLASTER CEILING, BASE COAT LOCATION: OFFICE, CLOSET	GY	N	NO ASBESTOS DETECTED NONFIBROUS MATERIAL
100 %				
392634	FIELD ID: 37A MATERIAL: SMOOTH PLASTER CEILING, SKIM COAT LOCATION: BOYS ROOM	WH	N	NO ASBESTOS DETECTED NONFIBROUS MATERIAL
100 %				
392635	FIELD ID: 37B MATERIAL: SMOOTH PLASTER CEILING, SKIM COAT LOCATION: GIRL'S ROOM	WH	N	NO ASBESTOS DETECTED NONFIBROUS MATERIAL
100 %				
392636	FIELD ID: 37C MATERIAL: SMOOTH PLASTER CEILING, SKIM COAT LOCATION: OFFICE, CLOSET	WH	N	NO ASBESTOS DETECTED NONFIBROUS MATERIAL
100 %				
392637	FIELD ID: 38A MATERIAL: 4' X 8' FIBERGLASS WALL PANEL ADHESIVE LOCATION: OFFICE	TN	N	NO ASBESTOS DETECTED NONFIBROUS MATERIAL
100 %				

REPORT ID: 10775 PROJECT: 13.00298 - 392518 SAMPLE LAB IDS: 392518 TO 392668, NO. OF SAMPLES: 151 PAGE 15 OF 19

LAB ID	SAMPLE DESCRIPTION		COLOR	ANALYTICAL RESULTS	
392638	FIELD ID: 38B	MATERIAL: 4' X 8' FIBERGLASS WALL PANEL ADHESIVE	TN	NO ASBESTOS DETECTED	100 %
	LOCATION: OFFICE				
392639	FIELD ID: 38C	MATERIAL: 4' X 8' FIBERGLASS WALL PANEL ADHESIVE	TN	NO ASBESTOS DETECTED	100 %
	LOCATION: OFFICE				
392640	FIELD ID: 39A	MATERIAL: PERIMETER INTERIOR METAL WINDOW	WH	NO ASBESTOS DETECTED	100 %
	GLAZING COMPOUND				
	LOCATION: OFFICE				
392641	FIELD ID: 39B	MATERIAL: PERIMETER INTERIOR METAL WINDOW	WH	NO ASBESTOS DETECTED	100 %
	GLAZING COMPOUND				
	LOCATION: ROOM 11				
392642	FIELD ID: 39C	MATERIAL: PERIMETER INTERIOR METAL WINDOW	WH	NO ASBESTOS DETECTED	100 %
	GLAZING COMPOUND				
	LOCATION: ROOM 14				
392643	FIELD ID: 40A	MATERIAL: 3' X 4' CEMENTITIOUS WALL PANEL UNDER	GY	ASBESTOS - CHRYSOTILE	30 %
	PERIMETER WINDOWS				
	LOCATION: OFFICE				
392644	FIELD ID: 40B	MATERIAL: 3' X 4' CEMENTITIOUS WALL PANEL UNDER	N/A	SAMPLE NOT ANALYZED	
	PERIMETER WINDOWS				
	LOCATION: ROOM 21B				
392645	FIELD ID: 40C	MATERIAL: 3' X 4' CEMENTITIOUS WALL PANEL UNDER	N/A	SAMPLE NOT ANALYZED	
	PERIMETER WINDOWS				
	LOCATION: ROOM 11				
392646	FIELD ID: 41A	MATERIAL: 3' X 6' TRANSITE TABLE TOP	BK	NO ASBESTOS DETECTED	100 %
	LOCATION:				

REPORT ID: 10775 PROJECT: 13.00298 - 392518 SAMPLE LAB IDS: 392518 TO 392668, NO. OF SAMPLES: 151 PAGE 16 OF 19

LAB ID	SAMPLE DESCRIPTION	COLOR	LAYERED	ANALYTICAL RESULTS
392647	FIELD ID: 41B MATERIAL: 3' X 6' TRANSITE TABLE TOP LOCATION:	BK	N	NO ASBESTOS DETECTED NONFIBROUS MATERIAL 100 %
392648	FIELD ID: 42A MATERIAL: HALLWAY INTERIOR WINDOW GLAZING COMPOUND LOCATION: HALL, @ ROOM 11	GY	N	NO ASBESTOS DETECTED NONFIBROUS MATERIAL 100 %
392649	FIELD ID: 42B MATERIAL: HALLWAY INTERIOR WINDOW GLAZING COMPOUND LOCATION: HALL, @ ROOM 11	GY/TN	Y	NO ASBESTOS DETECTED FIBROUS GLASS 03 % NONFIBROUS MATERIAL 97 %
392650	FIELD ID: 42C MATERIAL: HALLWAY INTERIOR WINDOW GLAZING COMPOUND LOCATION: TEACHER'S ROOM	GY/TN	Y	NO ASBESTOS DETECTED FIBROUS GLASS 03 % NONFIBROUS MATERIAL 97 %
392651	FIELD ID: 43A MATERIAL: TRAILER GYPSUM WALLBOARD LOCATION: ROOM 21	GY/TN	Y	NO ASBESTOS DETECTED FIBROUS GLASS 02 % CELLULOSE 12 % NONFIBROUS MATERIAL 86 %
392652	FIELD ID: 43B MATERIAL: TRAILER GYPSUM WALLBOARD LOCATION: ROOM 22	GY/TN	Y	NO ASBESTOS DETECTED FIBROUS GLASS 02 % CELLULOSE 08 % NONFIBROUS MATERIAL 90 %
392653	FIELD ID: 43C MATERIAL: TRAILER GYPSUM WALLBOARD LOCATION: MATH	GY/TN	Y	NO ASBESTOS DETECTED FIBROUS GLASS 02 % CELLULOSE 08 % NONFIBROUS MATERIAL 90 %

LAB ID	SAMPLE DESCRIPTION	COLOR	ANALYTICAL RESULTS
--------	--------------------	-------	--------------------

392654	FIELD ID: 44A MATERIAL: 12" X 12" WHITE W/BUE FLOOR TILE LOCATION: TRAILER, HALLWAY	WH	NO ASBESTOS DETECTED NONFIBROUS MATERIAL 100 %
--------	---	----	--

392655	FIELD ID: 44B MATERIAL: 12" X 12" WHITE W/BUE FLOOR TILE LOCATION: TRAILER, HALLWAY	WH	NO ASBESTOS DETECTED NONFIBROUS MATERIAL 100 %
--------	---	----	--

392656	FIELD ID: 44C MATERIAL: 12" X 12" WHITE W/BUE FLOOR TILE LOCATION: TRAILER, HALLWAY	WH	NO ASBESTOS DETECTED NONFIBROUS MATERIAL 100 %
--------	---	----	--

392657	FIELD ID: 45A MATERIAL: 12" X 12" WHITE W/BUE FLOOR TILE MASTIC LOCATION: TRAILER, HALLWAY	TN	NO ASBESTOS DETECTED NONFIBROUS MATERIAL 100 %
--------	---	----	--

392658	FIELD ID: 45B MATERIAL: 12" X 12" WHITE W/BUE FLOOR TILE MASTIC LOCATION: TRAILER, HALLWAY	TN	NO ASBESTOS DETECTED NONFIBROUS MATERIAL 100 %
--------	---	----	--

392659	FIELD ID: 45C MATERIAL: 12" X 12" WHITE W/BUE FLOOR TILE MASTIC LOCATION: TRAILER, HALLWAY	TN	NO ASBESTOS DETECTED NONFIBROUS MATERIAL 100 %
--------	---	----	--

392660	FIELD ID: 46A MATERIAL: 12" X 12" TAN FLOOR TILE LOCATION: ROOM 17	TN	NO ASBESTOS DETECTED NONFIBROUS MATERIAL 100 %
--------	--	----	--

392661	FIELD ID: 46B MATERIAL: 12" X 12" TAN FLOOR TILE LOCATION: ROOM 17	TN	NO ASBESTOS DETECTED NONFIBROUS MATERIAL 100 %
--------	--	----	--

392662	FIELD ID: 46C MATERIAL: 12" X 12" TAN FLOOR TILE LOCATION: ROOM 17	TN	NO ASBESTOS DETECTED NONFIBROUS MATERIAL 100 %
--------	--	----	--

REPORT ID: 10775 PROJECT: 13.00298 - 392518 SAMPLE LAB IDS: 392518 TO 392668, NO. OF SAMPLES: 151 PAGE 18 OF 19

LAB ID	SAMPLE DESCRIPTION	COLOR	LAYERED	ANALYTICAL RESULTS
392663	FIELD ID: 47A MATERIAL: 12" X 12" TAN FLOOR TILE MASTIC LOCATION: ROOM 17	BK/TN	Y	ASBESTOS - CHRYSOTILE NONFIBROUS MATERIAL 04 % 96 %
392664	FIELD ID: 47B MATERIAL: 12" X 12" TAN FLOOR TILE MASTIC LOCATION: ROOM 17	N/A	N/A	SAMPLE NOT ANALYZED
392665	FIELD ID: 47C MATERIAL: 12" X 12" TAN FLOOR TILE MASTIC LOCATION: ROOM 17	N/A	N/A	SAMPLE NOT ANALYZED
392666	FIELD ID: 48A MATERIAL: 2' X 4' PERIMETER WINDOWS W/1" WIRE SQ'S GLAZING COMPOUND LOCATION: ROOM 19	GY	N	NO ASBESTOS DETECTED NONFIBROUS MATERIAL 100 %
392667	FIELD ID: 48B MATERIAL: 2' X 4' PERIMETER WINDOWS W/1" WIRE SQ'S GLAZING COMPOUND LOCATION: ROOM 19	GY	N	NO ASBESTOS DETECTED NONFIBROUS MATERIAL 100 %
392668	FIELD ID: 48C MATERIAL: 2' X 4' PERIMETER WINDOWS W/1" WIRE SQ'S GLAZING COMPOUND LOCATION: ROOM 19	GY	N	NO ASBESTOS DETECTED NONFIBROUS MATERIAL 100 %

NOTES: N/A=NOT APPLICABLE

COLOR CODES:		BR BROWN	GY GRAY	OR ORANGE	RD RED	WH WHITE
BK BLACK	CL CLEAR	MU MULTI	PI PINK	SI SILVER	YL YELLOW	
BL BLUE	GN GREEN	NA NONE	PR PURPLE	TN TAN	MA MAROON	

LABORATORY CERTIFICATIONS: MA#AA000006 RI#AAL-025C3 VT#AL332367 ME#LB-061

CT#PH-0248

ACCREDITATION: NVLAP#101781-0

DATE OF ISSUE: 09/10/13 APPROVED SIGNATORY: KEVIN T. MCKENZIE, LABORATORY MANAGER

THESE SAMPLES WERE ANALYZED BY POLARIZED LIGHT MICROSCOPY WITH DISPERSION STAINING (PLM/DS) ACCORDING TO THE UNITED STATES ENVIRONMENTAL PROTECTION AGENCY (US EPA) "INTERIM METHOD FOR THE DETERMINATION OF ASBESTOS IN BULK INSULATION SAMPLES" (EPA-600/M4-82-020) AND "METHOD FOR THE DETERMINATION OF ASBESTOS IN BULK BUILDING MATERIALS" (EPA-600/R93/116). THIS METHOD IS CONSIDERED SENSITIVE TO THE PRESENCE OF ASBESTOS AT LESS THAN ONE PERCENT. THIS REPORT RELATES ONLY TO THOSE SAMPLES ANALYZED, AND MAY NOT BE INDICATIVE OF OTHER SIMILAR APPEARING MATERIALS EXISTING AT THIS, OR OTHER SITES.

FLOOR TILES AND RESINOUSLY BOUND MATERIALS ANALYZED BY EPA METHOD 600/R93/116, "METHOD FOR THE DETERMINATION OF ASBESTOS IN BULK BUILDING MATERIALS," MAY YIELD FALSE NEGATIVE RESULTS DUE TO DIFFICULTIES IN ISOLATING SUSPECT FIBERS AND SUBSEQUENTLY IDENTIFYING THEM BENEATH THE MATRIX MATERIAL WHICH ENCAPSULATES THEM. SHEARING DURING THE MANUFACTURE OF VINYL TILE DECREASES THE FIBER SIZE OF THE ASBESTOS COMPONENT; THEREFORE, THE FIBERS MAY NOT BE READILY DETECTABLE USING POLARIZED LIGHT MICROSCOPY. AS A RESULT, LABORATORY ANALYSIS CANNOT ALWAYS BE ACCOMPLISHED USING STANDARD TECHNIQUES. WHEN THE EPA METHOD YIELDS A "NO ASBESTOS DETECTED" RESULT FOR FLOOR TILES AND RESINOUSLY BOUND MATERIALS, COVINO ENVIRONMENTAL ASSOCIATES RECOMMENDS FURTHER ANALYSIS USING SEM OR TEM TECHNIQUES FOR THE IDENTIFICATION OF ASBESTOS.

THE EPA REQUIRES THAT FRIABLE SAMPLES WITH ASBESTOS CONTENTS OF LESS THAN 10%, DETERMINED BY A VISUAL ESTIMATION, BE VERIFIED USING THE POINT COUNTING TECHNIQUE OR OTHERWISE BE ASSUMED TO CONTAIN GREATER THAN 1% ASBESTOS BY THE BUILDING OWNER OR OPERATOR. IF ANALYTICAL RESULTS INDICATE THE PRESENCE OF 1% OR LESS ASBESTOS IN A FRIABLE MATERIAL, THAT MATERIAL MUST BE TREATED AS ASBESTOS-CONTAINING MATERIAL UNLESS THESE QUANTITIES ARE VERIFIED USING THE POINT COUNTING TECHNIQUE. FRIABLE SAMPLES WILL BE POINT-COUNTED UPON REQUEST BY THE CLIENT. POINT COUNTING IS NOT REQUIRED FOR THOSE SAMPLES IN WHICH NO ASBESTOS IS DETECTED DURING ANALYSIS BY PLM.

LAYERED SAMPLES ARE ANALYZED IN THE FOLLOWING MANNER: ALL LAYERS ARE ANALYZED SEPARATELY, AND QUANTITIES ARE REPORTED AS A PERCENTAGE OF THE ENTIRE COMPOSITE SAMPLE.

ALL SAMPLES ARE STORED AT THE COVINO LABORATORY FOR A PERIOD OF THREE MONTHS. FURTHER ANALYSIS OR RETURN OF SAMPLES MUST BE REQUESTED WITHIN THIS THREE-MONTH PERIOD TO GUARANTEE THEIR AVAILABILITY.

THIS REPORT MAY NOT BE REPRODUCED EXCEPT IN ITS ENTIRETY, WITHOUT PERMISSION OF THE COVINO ENVIRONMENTAL ASSOCIATES, INC. LABORATORY DIRECTOR OR ONE OF THE LABORATORY SIGNATORIES. THIS REPORT MAY NOT BE USED BY THE CLIENT TO CLAIM PRODUCT CERTIFICATION, APPROVAL, OR ENDORSEMENT BY NVLAP, NIST, OR ANY AGENCY OF THE FEDERAL GOVERNMENT.

Covino Environmental Associates, Inc.
300 Wildwood Ave, Woburn, MA
Phone 781.933.2555 Fax 781.932.9402 Email: mail@covinoinc.com

Asbestos Bulk Chain of Custody

Covino Project No. 13.00298

License No: AL000317

Client: Setuate Public Schools
600 Chief Justice Cushing Highway
Setuate, MA 02066

Date(s) Collected: 8/21 and 8/22/2013

Project Name: Hatterly Elementary School, 72 Ann Vinal Road
and Location: Setuate, MA

* Stop @ 1st Positive
Turnaround (circle) same day 24-hr standard (5 day)
Contact: Glenn Potter - 781.706.7317
Email: gpotter@covinoinc.com

Sample ID	DO NOT WRITE IN SHADED AREAS	Stereoscopic Visual	Optical Properties	Fiber Ref. Ind.	% Asbestos Fiber Percent	Fibrous Glass	Cellulose	Hair	Synthetic	Other	Non Fibrous
Field ID #	DESCRIPTION	C o l o r i n g	T e x t u r e	M i c r o s c o p i c	H i s t o r y	A m o u n t	A m o u n t	A m o u n t	A m o u n t	A m o u n t	A m o u n t
1A	MATERIAL: CANVASS COVERING ON LOCATION: BOILER BREACHING	6N	50 f7								95
392516	BOILER Rm										150
1B	MATERIAL: CANVASS COVERING ON BOILER BREACHING	6N	50 f7								95
392519	BOILER Rm										150
1C	MATERIAL: CANVASS COVERING ON BOILER BREACHING	6N	50 f7								95
392520	BOILER Rm										150
2A	MATERIAL: CANVASS COVERING ON FIBERGLASS PIPE INSULATION	6N	50 f7								85
392521	BOILER Rm										110
2B	MATERIAL: CANVASS COVERING ON FIBERGLASS PIPE INSULATION	6N	50 f7								85
392522	BOILER Rm										110
2C	MATERIAL: CANVASS COVERING ON FIBERGLASS PIPE INSULATION	6N	50 f7								85
392523	BOILER Rm										110

Relinquished by: Ken Robert Date: 8/24/2013 Received by: Ken Date: 8-26-13
Accept: 1 Reject: 0 Comments: None Analyst's Signature: [Signature] Date(s) Analyzed: 8-26-13 Temp: 23C
Rev. 3/28/08

Covino Environmental Associates, Inc.
300 Wildwood Ave, Woburn, MA
Phone 781.933.2555 Fax 781.932.9402 Email: mail@covinoinc.com

Asbestos Bulk Chain of Custody

Covino Project No. 13.00298
Samples Collected by: Ken Roberts
License No: AL000317
Date(s) Collected: 8/21 and 8/22/2013

Client: Sealate Public Schools
600 Chief Justice Cushing Highway
Sealate, MA 02066
Project Name: Hatherly Elementary School, 72 Ann Vinal Road
and Location: Sealate, MA

* SPC (see Results)
Turnaround (circle) same day 24 hr (Standard 5 day)
Contact: Glenn Potter - 781.706.7317
Email: gpotter@covinoinc.com

Sample ID	DO NOT WRITE IN SHADED AREAS	Project Name and Location: Sealate, MA									
		Sealate Public Schools 600 Chief Justice Cushing Highway Sealate, MA 02066 Hatherly Elementary School, 72 Ann Vinal Road Sealate, MA									
Field ID #	DESCRIPTION	Stereoscopic Visual									
Lab ID #		C	A	T	H	M	E	S	B	P	O
		o	s	e	e	o	x	i	f	i	t
		o	b	t	e	o	r	r	e	e	t
		r			E	H	P	E			L
3A	MATERIAL: 1" PRE FITTED INSULATION										
392524	LOCATION: BOILER ROOM GRAVEL SPACE										
3B	MATERIAL: 1" PRE FITTED INSULATION										
392525	LOCATION: BOILER ROOM GRAVEL SPACE										
3C	MATERIAL: 1" PRE FITTED INSULATION										
392526	LOCATION: KITCHEN										
3D	MATERIAL: 1" PRE FITTED INSULATION										
392527	LOCATION: E-2 ATTIC										
3E	MATERIAL: 1" PRE FITTED INSULATION										
392528	LOCATION: E-2 ATTIC										
3F	MATERIAL: 1" PRE FITTED INSULATION										
392529	LOCATION: E-2 ATTIC										

Relinquished by: Ken Roberts Date: 8/24/2013 Received by: [Signature]
Accept ☒ Reject ☐ Comments: [Signature]
Analyst's Signature: [Signature] Date(s) Analyzed: 8-28-13 Temp: 23C
Rev. 3/28/08

Email: mail@covinoinc.com

Date(s) Collected: 8/21 AND 8/22/2013

Turnaround (circle) same day 24-hr standard (5 day)

Epotter@covinoinc.com

[illegible]

Date: 8-26-13

Temp: 23°C

Covino Environmental Associates, Inc.
300 Wildwood Ave, Woburn, MA
Phone 781.933.2555 Fax 781.932.9402 Email: mail@covinoinc.com

Asbestos Bulk Chain of Custody

Page 4 of 26

Covino Project No. 13.00298
Samples Collected by: Ken Roberts
License No: AL000317
Date(s) Collected: 8/21 Aug 8/22/2013

Client: Schemate Public Schools
600 Chief Justice Cushing Highway
Schemate, MA 02066

Project Name: Batherly Elementary School, 72 Ann Vinal Road
and Location: Schemate, MA

* Stop @ 1st Positive
Turnaround (circle) same day 24-hr (standard 5 day)
Contact: Glenn Potter - 781.706.7317
Email: gpotter@covinoinc.com

Sample ID	DO NOT WRITE IN SHADED AREAS	Stearoscopic Visual	Optical Properties	Fiber Ref. Ind.	%Asbestos Fiber Present	Fibrous Glass	Cellulose	Hair	Synthetic	Other	Non Fibrous
Field ID #	DESCRIPTION	C o l o r b o d y	T e x t u r e	H o p e s	M o d e l s	E i n t e r n a l	S i n g l e	B i n o c u l a r	O p t i c a l	L a s e r	
4D	MATERIAL: 6" PPE FIBER INSULATION LOCATION: E-2 ATTIC										Not Analyzed
392536	MATERIAL: 6" PPE FIBER INSULATION LOCATION: E-2 ATTIC										Not Analyzed
4E	MATERIAL: 6" PPE FIBER INSULATION LOCATION: E-2 ATTIC										Not Analyzed
392537	MATERIAL: 6" PPE FIBER INSULATION LOCATION: E-2 ATTIC										Not Analyzed
5A	MATERIAL: DUCT VIBRATION CLOTH LOCATION: BOILER RM										60
392538	MATERIAL: DUCT VIBRATION CLOTH LOCATION: BOILER RM										60
5B	MATERIAL: DUCT VIBRATION CLOTH LOCATION: BOILER RM										60
392539	MATERIAL: DUCT VIBRATION CLOTH LOCATION: BOILER RM										60
5C	MATERIAL: DUCT VIBRATION CLOTH LOCATION: MUSIC RM										25
392540	MATERIAL: DUCT VIBRATION CLOTH LOCATION: MUSIC RM										25
6A	MATERIAL: DUCT STUCK-PIED ADHESIVE LOCATION: BOILER RM										70
392541	MATERIAL: DUCT STUCK-PIED ADHESIVE LOCATION: BOILER RM										70

Relinquished by: Glenn Potter Date: 8/24/2013 Received by: Ken Date: 8-26-13
Accept ☒ Reject ☐ Comments Analyst's Signature: Glenn Potter Date(s) Analyzed: 8-26-13 Temp: 23C
Rev. 3/28/08

Covino Environmental Associates, Inc.
300 Wildwood Ave, Woburn, MA
Phone 781.933.2555 Fax 781.932.9402 Email: mail@covinoinc.com

Asbestos Bulk Chain of Custody

Page 5 of 26

Covino Project No. 13.00298
Samples Collected by: Ken Roberts
License No: AL000317
Date(s) Collected: 8/21 and 8/22/2013

Client: Scituate Public Schools
600 Chief Justice Cushing Highway
Scituate, MA 02066

Project Name: Hatherly Elementary School, 72 Ann Vinal Road
and Location: Scituate, MA

* See @ 1st Positive
Turnaround (circle) same day 24-hr (standard 5 day)
Contact: Glenn Potter - 781.706.7317
Email: gpotter@covinoinc.com

Sample ID	DO NOT WRITE IN SHADED AREAS		Stereoscopic Visual		Optical Properties										Fiber Ref. Ind.	%Asbestos Fiber Present					% Non Asbestos Present				
Field ID #	DESCRIPTION	C o l o r	% A s t e r e o s c o p i c	T h r o u g h n e s s	M o d e	E x t e n s i o n	S i z e	B r i t t e r e r	P a r t i c l e s	O t h e r	L	I	C h r o y s t a l l i n e	A m o s i c	C r o m o l i t y	A n t i n e	A c t i n e	Fibrous Glass	Cellulose	Hair	Synthetic	Other	Non Fibrous		
6B	MATERIAL: DUCT STICK-PIU ADHESIVE																								
392542	LOCATION: BOILER RM																								
6C	MATERIAL: DUCT STICK- FIN ADHESIVE																								
392543	LOCATION: BOILER RM																								
7A	MATERIAL: ROCK PLASTER CEILING BASE COAT	6N	7057																						
392544	LOCATION: BOILER RM																								
7B	MATERIAL: ROCK PLASTER CEILING BASE COAT	6N	7057																						
392545	LOCATION: BOILER RM																								
7C	MATERIAL: ROCK PLASTER CEILING BASE COAT	6N	7057																						
392546	LOCATION: BOILER RM																								
7D	MATERIAL: ROCK PLASTER CEILING BASE COAT	6N	7057																						
392547	LOCATION: INDICATOR RM																								

Relinquished by: [Signature] Date: 8/24/2013 Received by: [Signature] Date: 8-26-13
Accept ☒ Reject ☐ Comments: [Signature] Analyst's Signature: [Signature] Date(s) Analyzed: 8-28-13 Temp: 22.9C
Rev. 3/28/08

Covino Environmental Associates, Inc.
300 Wildwood Ave, Woburn, MA
Phone 781.933.2555 Fax 781.932.9402 Email: mail@covinoinc.com

Asbestos Bulk Chain of Custody

Page 6 of 26

Covino Project No. 13.00298

Samples Collected by: Ken Roberts

License No: AL000317

Date(s) Collected: 8/21 AND 8/22/2013

Client:

Selma Public Schools
600 Chief Justice Cushing Highway
Selma, MA 02066

Project Name: Hatherly Elementary School, 72 Ann Vinal Road
and Location: Selma, MA

* Stop @ 1st Positive
Turnaround (circle) same day 24-hr standard (5 day)
Contact: Glenn Porter - 781.706.7317
Email: gporter@covinoinc.com

Sample ID	DO NOT WRITE IN SHADED AREAS	Stereoscopic Visual	Optical Properties	Fiber Ref. Ind.	%Asbestos Fiber Present	Fibrous Glass	Cellulose	Hair	Synthetic	Other	Non Fibrous						
Field ID #	DESCRIPTION	C o l o r	% T H o o b t g	M x u n e	E s i f e o r	O t h e r	C H R Y S	A M O S	C R O C M O	T R E N T A N C T	A A C T	Fibrous Glass	Cellulose	Hair	Synthetic	Other	Non Fibrous
7E	MATERIAL: ROUGH PLASTER CEILING BASE COAT LOCATION:	6W 105H															100
392548	INCINERATOR Rm. MATERIAL: ROUGH PLASTER CEILING SKIM COAT LOCATION:	6W 105H															100
BA	BOILER Rm. MATERIAL: ROUGH PLASTER CEILING SKIM COAT LOCATION:	6W 105H															100
392549	BOILER Rm. MATERIAL: ROUGH PLASTER CEILING SKIM COAT LOCATION:	6W 105H															100
BB	BOILER Rm. MATERIAL: ROUGH PLASTER CEILING SKIM COAT LOCATION:	6W 105H															100
392550	BOILER Rm. MATERIAL: ROUGH PLASTER CEILING SKIM COAT LOCATION:	6W 105H															100
BC	BOILER Rm. MATERIAL: ROUGH PLASTER CEILING SKIM COAT LOCATION:	6W 105H															100
392551	BOILER Rm. MATERIAL: ROUGH PLASTER CEILING SKIM COAT LOCATION:	6W 105H															100
BD	BOILER Rm. MATERIAL: ROUGH PLASTER CEILING SKIM COAT LOCATION:	6W 105H															100
392552	INCINERATOR Rm. MATERIAL: ROUGH PLASTER CEILING SKIM COAT LOCATION:	6W 105H															100
BE	INCINERATOR Rm. MATERIAL: ROUGH PLASTER CEILING SKIM COAT LOCATION:	6W 105H															100
392553	INCINERATOR Rm. MATERIAL: ROUGH PLASTER CEILING SKIM COAT LOCATION:	6W 105H															100

Relinquished by: Ken Roberts Date: 8/24/2013 Received by: Date: 8-26-13
Accept ☒ Reject ☐ Comments Analyst's Signature Date(s) Analyzed: 8-26-13 Temp: 22.9C
Rev. 3/28/08

Page 7 of 26

* Stop @ 1st Positive

Turnaround (circle) same day 24-hr standard (5 day

% Non Asbestos Present

	1991-1992	1992-1993	1993-1994	1994-1995
Glass	100	100	100	100
Fiber	100	100	100	100

--	--	--	--	--

92

[illegible]

10/27/20

--	--	--	--	--	--

✓

100

1007 N. Main St.

--	--	--	--

Not a link to

--	--	--	--	--

5

02613

03712-03716

000000

Covino Environmental Associates, Inc.
300 Wildwood Ave, Woburn, MA
Phone 781.933.2535 Fax 781.932.9402 Email: mail@covinoinc.com

Asbestos Bulk Chain of Custody

Covino Project No. 13.00298
Samples Collected by: Ken Roberts
License No: AL000317
Date(s) Collected: 8/21 and 8/22/2013

Client: Seduate Public Schools
600 Chief Justice Cushing Highway
Seduate, MA 02066

Project Name: Hatherly Elementary School, 72 Ann Vinal Road
and Location: Seduate, MA

* STOP at 1st Positive
Turnaround (circle) same day 24-hr Standard (5 day)
Contact: Glenn Potter - 781.706.7317
Email: gpotter@covinoinc.com

Sample ID	DO NOT WRITE IN SHADED AREAS	Stereoscopic Visual	Optical Properties	Fiber Ref. Ind.	% Asbestos Fiber Present	Fibrous Glass	Cellulose	Hair	Synthetic	Other	Non Fibrous
Field ID #	DESCRIPTION	C o l o r	% T r a n s p a r e n c y	H e i g h t	M a g n i f i c a t i o n	S i z e	I n t e n s i t y	O p a c i t y	L o c a t i o n	A c c e p t a n c e	A c c e p t a n c e
14B	MATERIAL: 1'x1' TESSURED SPUNE LOCATION: KITCHEN BATHROOM	6	2/10	2W							75
392566	MATERIAL: 1'x1' TESSURED SPUNE LOCATION: KITCHEN BATHROOM	6	2/10	2W							550
14C	MATERIAL: 1'x1' TESSURED SPUNE LOCATION: KITCHEN BATHROOM	6	2/10	2W							75
392567	MATERIAL: 1'x1' TESSURED SPUNE LOCATION: KITCHEN BATHROOM	6	2/10	2W							550
15A	MATERIAL: 1'x1' PINDOLE SPUNE LOCATION: KITCHEN BATHROOM	6	2/10	2W							70
392568	MATERIAL: 1'x1' PINDOLE SPUNE LOCATION: KITCHEN BATHROOM	6	2/10	2W							550
15B	MATERIAL: 1'x1' PINDOLE SPUNE LOCATION: KITCHEN BATHROOM	6	2/10	2W							Not Analyzed
392569	MATERIAL: 1'x1' PINDOLE SPUNE LOCATION: KITCHEN BATHROOM	6	2/10	2W							Not Analyzed
15C	MATERIAL: 1'x1' PINDOLE SPUNE LOCATION: KITCHEN BATHROOM	6	2/10	2W							Not Analyzed
392570	MATERIAL: 1'x1' PINDOLE SPUNE LOCATION: KITCHEN BATHROOM	6	2/10	2W							Not Analyzed
16A	MATERIAL: 9'x9' BRICK FLOOR TILE LOCATION: KITCHEN OFFICE	6	2/10	2W							90
392571	MATERIAL: 9'x9' BRICK FLOOR TILE LOCATION: KITCHEN OFFICE	6	2/10	2W							90

Relinquished by: [Signature] Date: 8/24/2013 Received by: [Signature] Date: 8-26-13
Accept 1 Reject 0 Comments None Analyst's Signature [Signature] Date(s) Analyzed: 8-27-13 Temp: 23.5C
Rev. 3/28/08

Asbestos Bulk Chain of Custody

Page 10 of 26

Email: mail@covinoinc.com

License No: AI-000317

AI-000317

Date(s) Collected: 8/21 AND 8/22/2013

Project Name	Hatherly Elementary School, 72 Ann Vinal Road
and Location:	Scituate, MA

Turnaround (circle) same day 24-hr standard (5 day)
 Contact: Glenn Potter – 781.706.7317
 Email: gpotter@covincinc.com

Contact: Glenn Potter – 781.706.7317
Email: gpotter@covinoinc.com

Email: gpotter@covinoinc.com

[illegible]

Relinquished by: Shirley K. Smith Date: 8/24/2023 Received by: _____

Date: 8/24/2023 Received by: _____

1

Date: 8-26-13

[illegible]

Analyst's Signature

D

Date(s) Analyzed: 8-27-13 Temp: 23.5

Rev. 3/28/08

Covino Environmental Associates, Inc.
300 Wildwood Ave, Woburn, MA
Phone 781.933.2555 Fax 781.932.9402 Email: mail@covinoinc.com

Asbestos Bulk Chain of Custody

Covino Project No. 13.00298
Samples Collected by: Ken Roberts
License No: A1000317
Date(s) Collected: 8/21/2013

Client: Sedgwick Public Schools
600 Chief Justice Cushing Highway
Sedgwick, MA 02066

Project Name: Hathery Elementary School, 72 Ann Vinal Road
and Location: Sedgwick, MA

* Stop @ 1st Positive
Turnaround (circle) same day 24-hr (standard 5 day)
Contact: Glenn Potter - 781.706.7317
Email: gpotter@covinoinc.com

Sample ID	DO NOT WRITE IN SHADED AREAS	Stereoscopic Visual	Optical Properties	Fiber Ref. Ind.	%Asbestos Fiber Present	Fibrous Glass	Cellulose	Hair	Synthetic	Other	Non Fibrous
Field ID #	DESCRIPTION	C o l o r	% T H o m p s o n	M e t h o d s	E s t i m a t e d c o n t e n t	O f f i c e r e l a t e d t o t a l					
18B	MATERIAL: 4" WALL BASE LOCATION: RM 21B Closet	BMM KOFH									100
392578	MATERIAL: 4" WALL BASE LOCATION: RM 15	BMM KOFH									100
18C	MATERIAL: 4" WALL BASE LOCATION: RM 15	BMM KOFH									100
392579	MATERIAL: 4" WALL BASE LOCATION: RM 15	BMM KOFH									100
19A	MATERIAL: 4" WALL BASE LOCATION: RM 15	BMM KOFH									100
392580	MATERIAL: 4" WALL BASE LOCATION: RM 15	BMM KOFH									100
19B	MATERIAL: 4" WALL BASE LOCATION: RM 15	BMM KOFH									100
392581	MATERIAL: 4" WALL BASE LOCATION: RM 15	BMM KOFH									100
19C	MATERIAL: 4" WALL BASE LOCATION: RM 15	BMM KOFH									100
392582	MATERIAL: 4" WALL BASE LOCATION: RM 15	BMM KOFH									100
20A	MATERIAL: 12" x 12" GARED Floor Tile LOCATION: CAFE/TERAIA	BMM KOFH									100
392583	MATERIAL: 12" x 12" GARED Floor Tile LOCATION: CAFE/TERAIA	BMM KOFH									100

Relinquished by: Ken Roberts Date: 8/24/2013 Received by: Ken
Accept / Reject Comments Analyst's Signature Date(s) Analyzed: 8-27-13 Temp: 23.5°C
Rev. 3/28/08

Covino Environmental Associates, Inc.
300 Wildwood Ave, Woburn, MA
Phone 781.933.2555 Fax 781.932.9402 Email: mail@covinoinc.com

Asbestos Bulk Chain of Custody

Covino Project No. 13.00298
Samples Collected by: Ken Roberts
License No: AL000317
Date(s) Collected: 8/21 and 8/22/2013

Client:

Schnate Public Schools
600 Chief Justice Cushing Highway
Schnate, MA 02066

Project Name and Location: Hatherly Elementary School, 72 Ann Vinal Road
Schnate, MA

Turnaround (circle) same day 24 hr standard (5 day)
Contact: Glenn Potter - 781.706.7317
Email: gpotter@covinoinc.com

Sample ID	DO NOT WRITE IN SHADED AREAS	Stereoscopic Visual	Optical Properties	Fiber Ref. Ind.	% Asbestos Fiber Present	Fibrous Glass	Cellulose	Hair	Synthetic	Other	Non Fibrous
Field ID #	DESCRIPTION	C % T H M B S B P O I A o o x i t i l s x u g r e h e o b t o p n e r									
Lab ID #											
22B	MATERIAL: 2'x4' FISSURED CEILING TILE										
392590	LOCATION: CAFETERIA										
22C	MATERIAL: 2'x4' FISSURED CEILING TILE										
392591	LOCATION: CAFETERIA										
23A	MATERIAL: PLASTER WALL - BASE COAT										
392592	LOCATION: CAFETERIA										
23B	MATERIAL: PLASTER WALL - BASE COAT										
392593	LOCATION: CAFETERIA										
23C	MATERIAL: PLASTER WALL - BASE COAT										
392594	LOCATION: CAFETERIA										
24A	MATERIAL: PLASTER WALL - SKIM COAT										
392595	LOCATION: CAFETERIA										

Relinquished by: Ken Roberts Date: 8/24/2013 Received by: Ken Date: 8-26-13
Accept ☒ Reject ☐ Comments Analyst's Signature Ken Date(s) Analyzed: 8-28-13 Temp: 23.3C

Covino Environmental Associates, Inc.
300 Wildwood Ave, Woburn, MA
Phone 781.933.2555 Fax 781.932.9402 Email: mail@covinoinc.com

Asbestos Bulk Chain of Custody

Covino Project No. 13.00298

Samples Collected by: Ken Roberts

License No: AL000317

Date(s) Collected: 8/21 and 8/22/2013

Client:

Selma Public Schools
600 Chief Justice Cushing Highway
Selma, MA 02066

Project Name: Hatherly Elementary School, 72 Ann Vinal Road
and Location: Selma, MA

Turnaround (circle) same day 24-hr (Standard (5 day))

Contact: Glenn Potter - 781.706.7317
Email: gpotter@covinoinc.com

* STOP @ 1st POSITIVE

Sample ID	DO NOT WRITE IN SHADED AREAS	Stereoscopic Visual										Fiber Ref. Ind.		%Asbestos Fiber Present						% Non Asbestos Present						
		C	A	T	H	M	E	S	B	P	O			C	A	C	T	A	A	Fibrous Glass	Cellulose	Hair	Synthetic	Other	Non Fibrous	
Field ID #	DESCRIPTION	o	i	s	r	e	p	n	e	c	h	c			S	S	I	O	T	I						
Lab ID #		o	b	t	e	b																				
24B	MATERIAL: PLASTER Wall - SKIM COAT	W	M	W																						
392596	LOCATION: CHALETIERIA	W	M	W																						
24C	MATERIAL: PLASTER Wall - SKIM COAT	W	M	W																						
392597	LOCATION: CHALETIERIA	W	M	W																						
25A	MATERIAL: CEMENT OVER FIBERGLASS DUCT INSULATION	W	M	W																						
392598	LOCATION: Music Rm	W	M	W																						
25B	MATERIAL: CEMENT OVER FIBERGLASS DUCT INSULATION	W	M	W																						
392599	LOCATION: Music Rm	W	M	W																						
25C	MATERIAL: CEMENT OVER FIBERGLASS DUCT INSULATION	W	M	W																						
392600	LOCATION: Music Rm	W	M	W																						
26A	MATERIAL: 4'x8' TECTUM GUM TILES	W	M	W																						
392601	LOCATION: Rm 1	W	M	W																						

Relinquished by: John Roberts Date: 8/24/2013 Received by: W Date: 8-26-13

Accept ✓ Reject Comments Analyst's Signature Date(s) Analyzed: 8-28-13 Temp: 23.3C

Covino Environmental Associates, Inc.
300 Wildwood Ave, Woburn, MA
Phone 781.933.2555 Fax 781.932.9402 Email: mail@covinoinc.com

Asbestos Bulk Chain of Custody

Page 15 of 26

Covino Project No. 13.00298
Samples Collected by: Ken Roberts
License No: A14M0317
Date(s) Collected: 8/21 and 8/22/2013

Client: Setuate Public Schools
600 Chief Justice Cushing Highway
Setuate, MA 02066

Project Name: Hatherly Elementary School, 72 Ann Vinal Road
and Location: Setuate, MA

* See @ 1st Page
Turnaround (circle) same day 24-hr standard (5 day)
Contact: Glenn Potter - 781.706.7317
Email: gpotter@covinoinc.com

Sample ID	DO NOT WRITE IN SHADED AREAS	Stereoscopic Visual	Optical Properties	Fiber Ref. Ind.	% Asbestos Fiber Present	Fibrous Glass	% Non Asbestos Present	Other	Non Fibrous
Field ID #	DESCRIPTION	C % T A S I O B	H M E S B P O I T O	L	C H A C T R A C T I N				
26B	MATERIAL: 4'x8' TECTUM CEILING TILES LOCATION: Rm 4	NO LN					60		140
392602							112		
26C	MATERIAL: 4'x8' TECTUM CEILING TILE LOCATION: OFFICE	NO LN					65		35
392603							112		
27A	MATERIAL: 9"x9" BLACK FLOOR TILE LOCATION: Rm 1	NO LN							87
392604									
27B	MATERIAL: 9"x9" BLACK FLOOR TILE LOCATION: Rm 4						NO?	Analyzed	
392605							NO?	Analyzed	
27C	MATERIAL: 9"x9" BLACK FLOOR TILE LOCATION: OFFICE								
392606									
28A	MATERIAL: 9"x9" BLACK FLOOR TILE LOCATION: Rm 1	NO LN							90
392607									

Relinquished by: [Signature] Date: 8/24/2013 Received by: [Signature] Date: 8-26-13
Accept ☒ Reject ☐ Comments: Analyst's Signature: [Signature] Date(s) Analyzed: 8-28-13 Temp: 23.3C

Covino Environmental Associates, Inc.
300 Wildwood Ave, Woburn, MA
Phone 781.933.2555 Fax 781.932.9402 Email: mail@covinoinc.com

Asbestos Bulk Chain of Custody

Covino Project No. 13.00298
License No: AL000317
Samples Collected by: Ken Roberts
Date(s) Collected: 8/21 and 8/22/2013

Client: Setuate Public Schools
600 Chief Justice Cushing Highway
Setuate, MA 02066

Project Name: Hatherly Elementary School, 72 Ann Vinal Road
and Location: Setuate, MA

Turnaround (circle) same day 24-hr standard (5 day)
Contact: Glenn Potter - 781.706.7317
Email: gpotter@covinoinc.com

Sample ID	DO NOT WRITE IN SHADED AREAS	Stereoscopic		Optical Properties						Fiber Ref.	% Non Asbestos Present																											
Field ID #	DESCRIPTION	Visual		M	E	S	B	P	O	Ind.	Present						Fibrous Glass	Cellulose	Hair	Synthetic	Other	Non Fibrous																
Lab ID #		C	% T								H	% A	% S	% I	% O	C							A	C	T	A	A											
		o l o r	o b s e r v e d	g	h	o o f i n g	h	h	h	L		C	H	R	O	Y	S	A	M	O	C	I	O	A	N	T	H	I	N									
28B	MATERIAL: 9"x9" Black Floor Tiles LOCATION: RM 4																																					
392608	MATERIAL: 9"x9" Black Floor Tiles LOCATION: RM 4																																					
28C	MATERIAL: 9"x9" Black Floor Tiles LOCATION: RM 4																																					
392609	MATERIAL: 9"x9" Black Floor Tiles LOCATION: RM 4																																					
29 A	MATERIAL: 9"x9" Tau Floor Tiles LOCATION: RM 1																																					
392610	MATERIAL: 9"x9" Tau Floor Tiles LOCATION: RM 1																																					
29 B	MATERIAL: 9"x9" Tau Floor Tiles LOCATION: RM 4																																					
392611	MATERIAL: 9"x9" Tau Floor Tiles LOCATION: RM 4																																					
29 C	MATERIAL: 9"x9" Tau Floor Tiles LOCATION: RM 1																																					
392612	MATERIAL: 9"x9" Tau Floor Tiles LOCATION: RM 4																																					
30A	MATERIAL: 9"x9" Tau Floor Tiles LOCATION: RM 1																																					
392613	MATERIAL: 9"x9" Tau Floor Tiles LOCATION: RM 1																																					

Relinquished by: [Signature] Date: 8/24/2013 Received by: [Signature] Date: 8-26-13
Accept / Reject Comments Analyst's Signature Date(s) Analyzed: 8-28-13 Temp: 23.1
Rev. 3/28/08

Page 17 of 26

* **Stop @ 1st Positive**
Turnaround (circle) same day 24 hr (standard 5 day)
Contact: Glenn Potter - 781.706.7317
Email: gpotter@covinoinc.com

Turnaround (circle) same day 24-hr
Contact: Glenn Potter - 781.706.7317
Email: gpotter@covinoinc.com

Turnaround (circle) same day 24-hr standard (5 day)

Contact: Glenn Potter – 781.706.7317
Email: gpotter@covinoinc.com

% Non Asbestos Present

CLASS	FLOORS
-------	--------

--	--	--	--	--

人

[illegible]

1047

100

--	--	--	--	--	--

10 20

1/2

Relinquished by: Seton School District Date: 5/24/2013
Received by: LM Date: 8-26-13

Accept <input checked="" type="checkbox"/> / Reject <input type="checkbox"/>	Comments	Analyst's Signature	Date(s) Analyzed:	Temp:
			8-28-13	23C

Rev. 3/28/08

Page 18 of 250

* Stop @ 1st Position
Turnaround (circle) same day 24-hr standard (5 day)

**600 Chief Justice Cushing Highway
Sctuate, MA 02066**

Project Name	Hatherly Elementary School, 72 Ann Vinat Road
and Location:	Setnate, MA

Stereoscopic Visual	Optical Properties	Fiber Ref. Ind.	%Asbestos Fiber Present
------------------------	--------------------	--------------------	----------------------------

% Non Asbestos Present

0 A e 0 0 x i i i i H M R R N

1	2	3	4	5	6	7	8	9	10	11	12	13	14	15	16	17	18	19	20	21	22	23	24	25	26	27	28	29	30	31	32	33	34	35	36	37	38	39	40	41	42	43	44	45	46	47	48	49	50	51	52	53	54	55	56	57	58	59	60	61	62	63	64	65	66	67	68	69	70	71	72	73	74	75	76	77	78	79	80	81	82	83	84	85	86	87	88	89	90	91	92	93	94	95	96	97	98	99	100	101	102	103	104	105	106	107	108	109	110	111	112	113	114	115	116	117	118	119	120	121	122	123	124	125	126	127	128	129	130	131	132	133	134	135	136	137	138	139	140	141	142	143	144	145	146	147	148	149	150	151	152	153	154	155	156	157	158	159	160	161	162	163	164	165	166	167	168	169	170	171	172	173	174	175	176	177	178	179	180	181	182	183	184	185	186	187	188	189	190	191	192	193	194	195	196	197	198	199	200	201	202	203	204	205	206	207	208	209	210	211	212	213	214	215	216	217	218	219	220	221	222	223	224	225	226	227	228	229	230	231	232	233	234	235	236	237	238	239	240	241	242	243	244	245	246	247	248	249	250	251	252	253	254	255	256	257	258	259	260	261	262	263	264	265	266	267	268	269	270	271	272	273	274	275	276	277	278	279	280	281	282	283	284	285	286	287	288	289	290	291	292	293	294	295	296	297	298	299	300	301	302	303	304	305	306	307	308	309	310	311	312	313	314	315	316	317	318	319	320	321	322	323	324	325	326	327	328	329	330	331	332	333	334	335	336	337	338	339	340	341	342	343	344	345	346	347	348	349	350	351	352	353	354	355	356	357	358	359	360	361	362	363	364	365	366	367	368	369	370	371	372	373	374	375	376	377	378	379	380	381	382	383	384	385	386	387	388	389	390	391	392	393	394	395	396	397	398	399	400	401	402	403	404	405	406	407	408	409	410	411	412	413	414	415	416	417	418	419	420	421	422	423	424	425	426	427	428	429	430	431	432	433	434	435	436	437	438	439	440	441	442	443	444	445	446	447	448	449	450	451	452	453	454	455	456	457	458	459	460	461	462	463	464	465	466
---	---	---	---	---	---	---	---	---	----	----	----	----	----	----	----	----	----	----	----	----	----	----	----	----	----	----	----	----	----	----	----	----	----	----	----	----	----	----	----	----	----	----	----	----	----	----	----	----	----	----	----	----	----	----	----	----	----	----	----	----	----	----	----	----	----	----	----	----	----	----	----	----	----	----	----	----	----	----	----	----	----	----	----	----	----	----	----	----	----	----	----	----	----	----	----	----	----	----	-----	-----	-----	-----	-----	-----	-----	-----	-----	-----	-----	-----	-----	-----	-----	-----	-----	-----	-----	-----	-----	-----	-----	-----	-----	-----	-----	-----	-----	-----	-----	-----	-----	-----	-----	-----	-----	-----	-----	-----	-----	-----	-----	-----	-----	-----	-----	-----	-----	-----	-----	-----	-----	-----	-----	-----	-----	-----	-----	-----	-----	-----	-----	-----	-----	-----	-----	-----	-----	-----	-----	-----	-----	-----	-----	-----	-----	-----	-----	-----	-----	-----	-----	-----	-----	-----	-----	-----	-----	-----	-----	-----	-----	-----	-----	-----	-----	-----	-----	-----	-----	-----	-----	-----	-----	-----	-----	-----	-----	-----	-----	-----	-----	-----	-----	-----	-----	-----	-----	-----	-----	-----	-----	-----	-----	-----	-----	-----	-----	-----	-----	-----	-----	-----	-----	-----	-----	-----	-----	-----	-----	-----	-----	-----	-----	-----	-----	-----	-----	-----	-----	-----	-----	-----	-----	-----	-----	-----	-----	-----	-----	-----	-----	-----	-----	-----	-----	-----	-----	-----	-----	-----	-----	-----	-----	-----	-----	-----	-----	-----	-----	-----	-----	-----	-----	-----	-----	-----	-----	-----	-----	-----	-----	-----	-----	-----	-----	-----	-----	-----	-----	-----	-----	-----	-----	-----	-----	-----	-----	-----	-----	-----	-----	-----	-----	-----	-----	-----	-----	-----	-----	-----	-----	-----	-----	-----	-----	-----	-----	-----	-----	-----	-----	-----	-----	-----	-----	-----	-----	-----	-----	-----	-----	-----	-----	-----	-----	-----	-----	-----	-----	-----	-----	-----	-----	-----	-----	-----	-----	-----	-----	-----	-----	-----	-----	-----	-----	-----	-----	-----	-----	-----	-----	-----	-----	-----	-----	-----	-----	-----	-----	-----	-----	-----	-----	-----	-----	-----	-----	-----	-----	-----	-----	-----	-----	-----	-----	-----	-----	-----	-----	-----	-----	-----	-----	-----	-----	-----	-----	-----	-----	-----	-----	-----	-----	-----	-----	-----	-----	-----	-----	-----	-----	-----	-----	-----	-----	-----	-----	-----	-----	-----	-----	-----	-----	-----	-----	-----	-----	-----	-----	-----	-----	-----	-----	-----	-----	-----	-----	-----	-----	-----	-----	-----	-----	-----	-----	-----	-----	-----	-----	-----	-----	-----	-----	-----	-----

CHOCOLATE SYSS

[illegible]

[illegible]

70

Page 10 of 10

[illegible]

[illegible]

[illegible]

[illegible]

[illegible]

[illegible]

Relinquished by: Shirley S. Hunt Date: 5/29/2013 Received by: LM Date: 8-26-13

Accept ☒ Reject ☐ Comments _____ Analyst's Signature [Signature] Date(s) Analyzed: 8-28-15 Temp: 23.1°C

Rev. 3/28/08

Asbestos Bulk Chain of Custody

Page 19 of 24

* Stop @ 1st Positive

License No: AI-000317

Project Name Hatherly Elementary School, 72 Ann Vinal Road
and Location: Scituate, MA

Turnaround (circle) same day 24-hr standard (5 day)

Contact: Glenn Potter – 781.706.7317
Email: gpotter@covinoinc.com

Email: gspotter@covinoinc.com

[illegible]

Date: 8-26-13

Date(s) Analyzed: 8-28-15 Temp: 25C

Covino Environmental Associates, Inc.
300 Wildwood Ave, Woburn, MA
Phone 781.933.2555 Fax 781.932.9402 Email: mail@covinoinc.com

Asbestos Bulk Chain of Custody

Covino Project No. 13.00298

Samples Collected by: Ken Roberts

License No: AL000317

Date(s) Collected: 8/21 AND 8/22/2013

Client:

Seltate Public Schools
600 Chief Justice Cushing Highway
Seltate, MA 02066

Project Name: Hatherly Elementary School, 72 Ann Vinal Road
and Location: Seltate, MA

Turnaround (circle) same day 24 hr (standard 5 day)

Contact: Glenn Potter - 781.706.7317
Email: gpotter@covinoinc.com

Sample ID	DO NOT WRITE IN SHADED AREAS	Stereoscopic Visual	Optical Properties	Fiber Ref. Ind.	% Asbestos Fiber Present	% Non Asbestos Present					Non Fibrous
Field ID #	DESCRIPTION	C o l o r	T e m p e r a t u r e	M o d e l	S i z e	B r a n d	P a r t i c l e s	O t h e r	L a b e l		
36B	MATERIAL: SMOOTH PLASTER GELUID LOCATION: GIRL'S Rm	6m	10m								100
36C	MATERIAL: SMOOTH PLASTER GELUID LOCATION: GIRL'S Rm	6m	10m								100
37A	MATERIAL: SMOOTH PLASTER GELUID LOCATION: OFFICE CLOSET	6m	10m								100
37B	MATERIAL: SMOOTH PLASTER GELUID LOCATION: SKIM COAT	6m	10m								100
37C	MATERIAL: SMOOTH PLASTER GELUID LOCATION: SKIM COAT	6m	10m								100
38A	MATERIAL: 41x8' FIBERGLASS BOARD PANEL ADHESIVE LOCATION: OFFICE	6m	10m								100

Relinquished by: [Signature] Date: 8/24/2013 Received by: [Signature] Date: 8-26-13

Accept: [Signature] Reject: [Signature] Comments: [Signature] Analyst's Signature: [Signature] Date(s) Analyzed: 8-28-13 Temp: 23C

Page 21 of 26

Turnaround (circle) same day 24-hr standard (5 day)

Turnaround (circle) same day 24-hr standard (5 day)

Email: gpotter@covinoinc.com

100

[illegible]

Date: 8-26-73

Date(s) Analyzed: 8-27-15 Temp: 22-21 C

Covino Environmental Associates, Inc.
300 Wildwood Ave, Woburn, MA
Phone 781.933.2555 Fax 781.932.9402 Email: mail@covinoinc.com

Asbestos Bulk Chain of Custody

Covino Project No. 13.00298
Samples Collected by: Ken Roberts
License No: AL000317
Date(s) Collected: 8/21 & 8/22/2013

Client: Selkate Public Schools
600 Chief Justice Cushing Highway
Selkate, MA 02066

Project Name: Hathery Elementary School, 72 Ann Vinal Road
and Location: Selkate, MA

* STOP @ 1st Positive
Turnaround (circle) same day 24-hr standard (5 day)

Sample ID	DO NOT WRITE IN SHADED AREAS	Stencoscopic Visual	Optical Properties	Fiber Ref. Ind.	%Asbestos Fiber Present	Fibrous Glass	Celulose	Hair	Synthetic	Other	Non Fibrous
Field ID #	DESCRIPTION	C o l o r	A s b e s t o s	T h e n e r g y	M i c r o s c o p e	S i l i c a t e	B i t u m e n	O t h e r	L i g h t	C h e m i c a l	A n a l y s i s
40B	MATERIAL: 3'x4' CEMENTOUS WALL FACED UNDER PERIMETER WINDOWS LOCATION: <u>Rm 21B</u>										
39X644											
40C	MATERIAL: 3'x4' CEMENTOUS WALL FACED UNDER PERIMETER WINDOWS LOCATION: <u>Rm 11</u>										
39X645											
41A	MATERIAL: 3'x6' TRANSITE TABLE TOP LOCATION: <u>Rm 11</u>										
39X646											
41B	MATERIAL: 3'x6' TRANSITE TABLE TOP LOCATION: <u>Rm 11</u>										
39X647											
42A	MATERIAL: HALLWAY INTERIOR WINDOW GLAZING COMPOUND LOCATION: <u>Hall @ Rm 11</u>										
39X648											
42B	MATERIAL: HALLWAY INTERIOR WINDOW GLAZING COMPOUND LOCATION: <u>Hall @ Rm 11</u>										
39X649											

Relinquished by: Ken Roberts Date: 8/22/13 Received by: Ken Date: 8-26-13
Accept ✓ Reject Comments Analyst's Signature Ken Date(s) Analyzed: 8-29-13 Temp: 22.9C

Covino Project No. 13.00298

Samples Collected by: Ken Roberts

License No: AL000317

Date(s) Collected: 8/21 4:00 8/22/2013

Client:

Setuate Public Schools
600 Chief Justice Cushing Highway
Setuate, MA 02066

Project Name: Hatherly Elementary School, 72 Ann Vinal Road
Set Location: Setuate, MA

* STOP @ 1st POSITIVE
Turnaround (circle) same day 24 hr standard (5 day)
Contact: Glenn Potter - 781.706.7317
Email: gpotter@covinoinc.com

Sample ID	DO NOT WRITE IN SHADED AREAS	Microscopic										Fiber Ref.					%Asbestos Fiber Present					% Non Asbestos Present							
Field ID #	DESCRIPTION	Stereoscopic Visual		Optical Properties										Ind.		Present					Fibrous Glass	Cellulose	Hair	Synthetic	Other	Non Fibrous			
Lab ID #		C	A	% T	H	M	E	S	B	P	O	I	L	C	A	C	T	A	A										
		o	A	o	x	o	m	f	n	E	i	r	e	f		S	M	R	O	S	I	O	O	N					
42C	MATERIAL: HALLWAY Interior WOODEN SCRAPE Compound	6	1/10	L																									97
392656	LOCATION: TEACHER'S Rm																												
43A	MATERIAL: TRAILER Gypsum WALL BOARD	6	1/10	L																									86
392651	LOCATION: Rm 21																												
43B	MATERIAL: TRAILER Gypsum WALL BOARD	6	1/10	L																									90
392652	LOCATION: Rm 22																												
43C	MATERIAL: TRAILER Gypsum WALL BOARD	6	1/10	L																									90
392653	LOCATION: MATH																												
44A	MATERIAL: 12"x12" WHITE w/ BLUE Floor TILE	6	1/10	L																									100
392654	LOCATION: TRAILER HALLWAY																												
44B	MATERIAL: 12"x12" WHITE w/ BLUE Floor TILE	6	1/10	L																									100
392655	LOCATION: TRAILER HALLWAY																												100

Relinquished by: Ken Roberts Date: 8/24/2013 Received by: Ken Date: 8-26-13
Accept ☒ Reject ☐ Comments Analyst's Signature Ken Date(s) Analyzed: 8-29-13 Temp: 22-9C

Covino Environmental Associates, Inc.
300 Wildwood Ave, Woburn, MA
Phone 781.933.2555 Fax 781.932.9402 Email: mail@covinoinc.com

Asbestos Bulk Chain of Custody

Covino Project No. 13.00298
Samples Collected by: Ken Roberts
License No: AL000317
Date(s) Collected: 8/21 and 8/22/2013

Client: Setuate Public Schools
600 Chief Justice Cushing Highway
Setuate, MA 02066

Project Name: Hatherly Elementary School, 72 Ann Vinal Road
and Location: Setuate, MA

* Stop at 1st Positive
Turnaround (circle) same day 24-hr standard (5 day)
Contact: Glenn Porter - 781.706.7317
Email: gporter@covinoinc.com

Sample ID	DO NOT WRITE IN SHADED AREAS	Stereoscopic Visual	Optical Properties	Fiber Ref. Ind.	%Asbestos Fiber Present	Fibrous Glass	Cellulose	Hair	Synthetic	Other	Non Fibrous
Field ID #	DESCRIPTION	C o l o r	% T H o m p k i n	M e t h o d	E x t e n s i o n	S i z e	B r a n d	P a r t i c l e s	O t h e r	L	I
44C	MATERIAL: 12"x12" WHITE w/ BLUE FLOOR TILE	W H O f h									
392656	LOCATION: TRAVERSE HALLWAY										
45A	MATERIAL: 12"x12" WHITE w/ BLUE FLOOR TILE	W H O f h									
392657	LOCATION: TRAVERSE HALLWAY										
45B	MATERIAL: 12"x12" WHITE w/ BLUE FLOOR TILE	W H O f h									
392658	LOCATION: TRAVERSE HALLWAY										
45C	MATERIAL: 12"x12" WHITE w/ BLUE FLOOR TILE	W H O f h									
392659	LOCATION: TRAVERSE HALLWAY										
46A	MATERIAL: 12"x12" TAN FLOOR TILE	W H O f h									
392660	LOCATION: Rm 17										
46B	MATERIAL: 12"x12" TAN FLOOR TILE	W H O f h									
392661	LOCATION: Rm 17										

Relinquished by: Ken Roberts Date: 8/24/2013 Received by: WM Date: 8-26-13
Accept ✓ Reject Comments Analyst's Signature Ken Porter Date(s) Analyzed: 8-29-13 Temp: 22.9C
Rev. 3/28/08

Asbestos Bulk Chain of Custody

Covino Environmental Associates, Inc.
 300 Wildwood Ave, Woburn, MA
 Phone 781.933.2555 Fax 781.932.9402 Email: mail@covinoinc.com

* Stop @ 1st Positive

Turnaround (circle) same day 24-h standard (5 day)
 Contact: Glenn Potter - 781.706.7317
 Email: gpotter@covinoinc.com

Covino Project No. 13.00298		Client: Setuate Public Schools 600 Chief Justice Cushing Highway Setuate, MA 02066		Project Name: Hatherly Elementary School, 72 Ann Vinal Road and Location: Setuate, MA		Turnaround (circle) same day 24-h standard (5 day) Contact: Glenn Potter - 781.706.7317 Email: gpotter@covinoinc.com	
License No: A1-000317		Samples Collected by: Ken Roberts		Date(s) Collected: 8/21 ADD 8/22/2013			
Sample ID	DO NOT WRITE IN SHADED AREAS	Stereoscopic Visual	Optical Properties	Fiber Ref. Ind.	% Asbestos Fiber Present	Fibrous Glass	% Non Asbestos Present
Field ID #	DESCRIPTION	C A T H E R L Y E L E M E N T A R Y S C H O O L	M A T E R I A L S A N D L O C A T I O N S	L	A M C R O C T I O N S		
Lab ID #							
46C	MATERIAL: 12"x12" TAN Floor Tile LOCATION: Rm 17	6/11/17	6/11/17	1.39/1.57	4		96
392662	MATERIAL: 12"x12" TAN Floor Tile LOCATION: Rm 17	6/11/17	6/11/17	1.39/1.57	4		100
47A	MATERIAL: 12"x12" TAN Floor Tile LOCATION: Rm 17	6/11/17	6/11/17	1.39/1.57	4		96
392663	MATERIAL: 12"x12" TAN Floor Tile LOCATION: Rm 17	6/11/17	6/11/17	1.39/1.57	4		100
47B	MATERIAL: 12"x12" TAN Floor Tile LOCATION: Rm 17	6/11/17	6/11/17	1.39/1.57	4		96
392664	MATERIAL: 12"x12" TAN Floor Tile LOCATION: Rm 17	6/11/17	6/11/17	1.39/1.57	4		100
47C	MATERIAL: 12"x12" TAN Floor Tile LOCATION: Rm 17	6/11/17	6/11/17	1.39/1.57	4		96
392665	MATERIAL: 12"x12" TAN Floor Tile LOCATION: Rm 17	6/11/17	6/11/17	1.39/1.57	4		100
48A	MATERIAL: 2"x4" PEANUTS WINDOWS w/ 1" WIRE S&S GLAZING LOCATION: Rm 19	6/11/17	6/11/17	1.39/1.57	4		100
392666	MATERIAL: 2"x4" PEANUTS WINDOWS w/ 1" WIRE S&S GLAZING LOCATION: Rm 19	6/11/17	6/11/17	1.39/1.57	4		100
48B	MATERIAL: 2"x4" PEANUTS WINDOWS w/ 1" WIRE S&S GLAZING LOCATION: Rm 19	6/11/17	6/11/17	1.39/1.57	4		100
392667	MATERIAL: 2"x4" PEANUTS WINDOWS w/ 1" WIRE S&S GLAZING LOCATION: Rm 19	6/11/17	6/11/17	1.39/1.57	4		100

Relinquished by: Glenn Potter Date: 8/24/2013 Received by: Ken Date: 8-26-13
 Accept ✓ Reject Comments Analyst's Signature Glenn Potter Date(s) Analyzed: 8-29-13 Temp: 22.9C

* Stop @ 1st Positive

Client: Seiyu Public Schools

Turnaround (circle) same day 24-hr standard (5th day)

600 CHIEF JUSTICE CUSHING HALL
SOMERSET ST. BOSTON, MASS.

Contact Gus and Potter

Project Name HATHORI ELSMONTORY SCIENCE

Phone _____

Fax _____

©2000, 2001, 2002 by The McGraw-Hill Companies, Inc.

72 ADD VIAL RD. SCIENT

Email _____

[illegible]

Date: 8-26-13

Date(s) Analyzed: 8-20-13 Temp: 22.9

APPENDIX F

PERSONNEL CERTIFICATIONS

THE VERTEX COMPANIES, INC.

ACCREDITATION PAGE

Accredited Inspector

Name: Jason Mohre

Accreditation Number: AI000262

Signature: _____

Date: 5/11/2021

Accredited Management Planner

Name: Jason Mohre

Accreditation Number: AP000080

Signature: _____

Date: 5/11/21

APPENDIX G
SUPPLEMENTAL FORMS

CONTACT INFORMATION

Local Education Agency and School Information

Local Education Agency: Scituate Public Schools	Telephone Number: 781-545-8749
Address: 606 Chief Justice Cushing Hwy Scituate, MA	
Name of School: Hatherly Elementary School	Telephone Number: 781-545-8780
Address: 72 Ann Vinal Road Scituate, MA	County: Plymouth County

Designated Person Information

Name of Designated Person: Robert Dillon		Telephone Number: 781-545-8749	
Address: 606 Chief Justice Cushing Hwy Scituate, MA			
Course Name:	Training Agency:	Date:	Hours of Training:

Management Planner(s) The following management planner(s) has developed/contributed to this plan and is accredited under the state accreditation program or another state's accreditation program or an EPA-approved course.

Name: Jason Mohre		Telephone Number: 781-952-6000
Firm: The Vertex Companies, Inc.		
Address: 400 Libbey Parkway, Weymouth, Massachusetts 02189		
State of Accreditation/Accreditation Number: MA/AP00080		
Course Name: Asbestos Management Planner	Date: 1/28/10	Training Agency: Institute for Environmental Education
		Telephone Number: 800-823-6239

SCHOOL BUILDING LIST

Name of Building	Address	Construction Date(s)	Friable ACBM*	Non-Friable ACBM	Friable and Non-Friable Suspected ACBM Assumed to be ACM**	No ACBM
Wampanoag Elementary School	266 Tilden Road	1960	X	X	X	
Cushing Elementary School	One Aberdeen Drive	1963	X	X	X	
Hatherly Elementary School	72 Ann Vinal Road	1963	X	X	X	
Scituate High School	606 Chief Justice Cushing Highway	1967	X	X		
Jenkins Elementary School	49 Vinal Road	2003				X
Gates Middle School	606 Chief Justice Cushing Highway	2019	X	X		

*ACBM -Asbestos-Containing Building Material

**ACM -Asbestos-Containing Material

DATE: _____ May 7, 2021

DESIGNATED PERSON ASSURANCES

In accordance with 40 CFR ' 763.93(i) of the Environmental Protection Agency Asbestos-Containing Material in Schools regulation, the undersigned Local Education Agency (LEA) Designated Person (DP) hereby certifies that the following general responsibilities of the LEA under 40 CFR ' 763.84 have been or will be met:

1. Ensure that the activities of any persons who perform inspections, reinspections, and periodic surveillance, develop and update management plans, and develop and implement response actions, including operations and maintenance, are carried out in accordance with Part 763, Subpart E.
2. Ensure that all custodial and maintenance employees are properly trained as required by Part 763, Subpart E and other applicable Federal and/or State regulations (e.g., the Occupational Safety and Health Administration asbestos standard for construction, the EPA worker protection rule, or applicable State regulations).
3. Ensure that workers and building occupants, or their legal guardians, are informed at least once each school year about inspections, response actions, and post-response action activities, including periodic reinspection and surveillance activities that are planned or in progress.
4. Ensure that short-term workers (e.g., telephone repair workers, utility workers, or exterminators) who may come in contact with asbestos in a school are provided information regarding the locations for Asbestos-Containing Building Materials (ACBM) and suspected ACBM assumed to be Asbestos-Containing Materials (ACM).
5. Ensure that warning labels are posted in accordance with ' 40 CFR 763.95.
6. Ensure that management plans are available for inspection and notification of such availability has been provided as specified in the management plan under ' 40 CFR 763.93(g).
7. Designate a person to ensure that requirements under ' 763.84 are properly implemented and ensure that the designated person receives adequate training to perform duties assigned under ' 763.84. Such training shall provide, as necessary, basic knowledge of: health effects of asbestos; detection, identification, and assessment of ACM; options for controlling ACBM; asbestos management programs; relevant Federal and State regulations concerning asbestos, including those in Part 763, Subpart E and those of the Occupational Safety and Health Administration, U.S. Department of Transportation and the U.S. Environmental Protection Agency.
8. Consider whether any conflict of interest may arise from the inter-relationship among accredited personnel and whether that should influence the selection of accredited personnel to perform activities under Part 763, Subpart E.

Name of Designated Person:

Designated Person's Signature:

Date:

EVALUATION OF RESOURCES**DATE: 5/7/2021**

- | | |
|--|-------------|
| 1. Estimated Resources to Complete the Response Actions | \$ 500.00 |
| 2. Estimated Resources to Conduct Re-Inspection | \$ 1,500.00 |
| 3. Estimated Resources to Complete Operations and Maintenance Activities | \$ 500.00 |
| 4. Estimated Resources to Conduct 6-Month Periodic Surveillance | \$ 400.00 |
| 5. Estimated Resources to Conduct Training for Custodial Staff | |
| a. LEA-Designated Person Training | \$ 250.00 |
| b. 16-Hour Operations and Maintenance Training (per Worker) | \$ 295.00 |
| c. 2-Hour Awareness Training (per Worker) | \$ 75.00 |

PLAN FOR OPERATIONS AND MAINTENANCE ACTIVITIES

LEA Name: **Scituate Public Schools**

School Name: **Hatherly Elementary School**

Attach or outline the plan here:

Protecting Workers from the Hazards of Asbestos-Containing Flooring Material Maintenance

Many resilient flooring tiles contain asbestos, a mineral fiber used in numerous building materials before its dangerous health effects were discovered. A hazard exists for workers who buff or wax flooring material containing asbestos. Any floor tiles installed prior to 1980 should be presumed to contain asbestos — unless confirmed to be asbestos-free by a laboratory — and the proper protective actions should be taken. The Occupational Safety and Health Administration (OSHA) has regulations to protect workers from asbestos.

What is the hazard?

The equipment used during the care or maintenance of asbestos-containing flooring tiles has an abrasive pad which runs at high speeds, and can release tiny asbestos fibers into the air.

The airborne fibers can then be inhaled by workers without knowing it, and become trapped in their lungs.

Asbestos is a known human carcinogen and can cause chronic lung disease as well as lung and other cancers.

How do I know if there is a hazard?

Airborne asbestos fibers are very small and cannot be seen by the naked eye.

Flooring materials installed prior to 1980 should be presumed to contain asbestos and should be treated as such, unless a piece of the material is sent to a reputable laboratory and analyzed for asbestos by transmission electron microscopy and found to contain a concentration of less than 1.0%.

What should be done to protect workers?

Workers caring for asbestos-containing flooring material (general industry) are protected by OSHA's Asbestos standard, 29 Code of Federal Regulations (CFR) Part 1910.1001. OSHA has separate asbestos standards for the construction and shipyard industries due to differing working conditions and asbestos exposures.

Training elements of OSHA's Asbestos Standard

Initial and annual training must be provided in a manner and language that workers can understand. The training must include: health effects of asbestos; locations of asbestos-containing and presumed asbestos-containing materials; recognition of damage and deterioration of asbestos-containing materials; and the proper response to fiber release episodes. The following elements should be included in this training:

Care of Asbestos-Containing Flooring Materials

- Do not sand asbestos-containing flooring material;
- Use only low-abrasion buffing pads;
- Operate buffers only at speeds lower than 300 rpm;
- Use wet methods;
- If asbestos-containing flooring material has sufficient finish, brushing or dry buffing is permissible.

If these methods are properly implemented, personal protective equipment (PPE) should not be necessary.

Recordkeeping

A record of training and worker notification is necessary. If applicable, any exposure monitoring records and medical monitoring records must also be kept.

OPERATIONS AND MAINTENANCE ACTIVITIES

LEA Name: **Scituate Public Schools**

School Name: **Hatherly Elementary School**

Building Assessed/Address: _____.

Room/Functional Space: _____.

Provide the description of the activity, including preventative measures used, and the location where the activity occurred for those operation and maintenance activities specified under 40 CFR 763.91(d) and under 40 CFR 763.94(g), for any major asbestos activity conducted under

40CFR763.91(e): _____

_____.

Provide the start and completion dates of the activity: _____.

Provide the name of each person performing the activity and for a major asbestos activity, provide the name, signature, state of accreditation and, if applicable, the accreditation number of each person performing the activity:

_____.

If ACBM is removed, provide the name and location of the storage or disposal site of the ACM:

_____.

CLEANING RECORD

LEA Name: **Scituate Public Schools**

School Name: **Hatherly Elementary School**

Cleaning: (check one) [] Cleaning after initial inspection [] Additional cleaning approved by LEA under O&M Plan.

Date of Cleaning: _____.

Location of Cleaning:_____.

Cleaning Methods Used :_____.

Provide the name of each person performing the cleaning

_____.

MAJOR/MINOR FIBER RELEASE EPISODE

LEA Name: **Scituate Public Schools**

School Name: **Hatherly Elementary School**

Type of Episode: (check one) [☐] Major Fiber Release [☐] Minor Fiber release.

Date of episode: _____.

Provide the description of the fiber release episode, including the location, type of ACBM, method of repair, and preventative measure or response action taken:

Provide the names of each person performing the work:

If ACBM is removed, provide the name and location of the storage or disposal site of the ACM_____

PERIODIC SURVEILLANCE

AHERA Six-Month Surveillance Inspection Date: _____

(Print Name): _____

Signature: _____

Hatherly Elementary School-72 Ann Vinal Road

Location	ACBM Description	Estimated Quantity	April 2021 Cond.	Oct. 2021 Cond.	April 2022 Cond.	Oct. 2022 Cond.	April 2023 Cond.	Oct. 2023 Cond.
<i>First Floor</i>								
A/V Room	Pipe Fitting Insulation	3 Units	G					
Storage M-1	Pipe Fitting Insulation	4 Units	G					
Hallway by Boiler Room	Pipe Fitting Insulation	4 Units	G					
Janitor Office	Pipe Fitting Insulation	3 Units	G					
Kitchen Storage	Pipe Fitting Insulation	19 Units	G					
Kitchen	Ceramic Floor Tile Adhesive	2,100 ft ²	C					
	Pipe Fitting Insulation	5 Units	G					
	1' x 1' Ceiling Tile (Pinhole)	2,100 ft ²	G					
Kitchen Office	9" x 9 " Brown Floor Tile	77 ft ²	G					
	Black Floor Tile Mastic	77 ft ²	C					
	1' x 1' Ceiling Tile (Pinhole)	77 ft ²	G					
Motor Room	Pipe Fitting Insulation	9 Units	G					
	Canvas Covering on Duct Insulation	260 ft ²	G					
Cafeteria	9" x 9 " Tan Floor Tile	3,000 ft ²	G					
	Black Floor Tile Mastic	3,000 ft ²	C					
	2' x 4' Ceiling Tile (Fissure Pattern)	3,000 ft ²	G					
Room 1	9" x 9 " Gray Floor Tile	900 ft ²	MD (6 ft ²)					
	Black Floor Tile Mastic	900 ft ²	C					
Room 2	9" x 9 " Gray Floor Tile	900 ft ²	MD (3 ft ²)					
	Black Floor Tile Mastic	900 ft ²	C					
Room 3	9" x 9 " Gray Floor Tile	900 ft ²	MD (2 ft ²)					
	Black Floor Tile Mastic	900 ft ²	C					
Room 4	9" x 9 " Gray Floor Tile	900 ft ²	MD (4 ft ²)					
	Black Floor Tile Mastic	900 ft ²	C					

AHERA Six-Month Surveillance Inspection Date: _____

(Print Name): _____

Signature: _____

Hatherly Elementary School-72 Ann Vinal Road

Location	ACBM Description	Estimated Quantity	April 2021 Cond.	Oct. 2021 Cond.	April 2022 Cond.	Oct. 2022 Cond.	April 2023 Cond.	Oct. 2023 Cond.
<i>First Floor</i>								
Room 4.5	9" x 9 " Gray Floor Tile (Under Carpet)	168 ft ²	C					
	Black Floor Tile Mastic	168 ft ²	C					
Room 5	9" x 9 " Gray Floor Tile	900 ft ²	G					
	Black Floor Tile Mastic	900 ft ²	C					
Room 6	9" x 9 " Gray Floor Tile	900 ft ²	G					
	Black Floor Tile Mastic	900 ft ²	C					
Hallway by Room 6	9" x 9 " Green Floor Tile	256 ft ²	MD (4 ft ²)					
	Black Floor Tile Mastic	256 ft ²	C					
Room 7	9" x 9 " Gray Floor Tile	900 ft ²	MD (8 ft ²)					
	Black Floor Tile Mastic	900 ft ²	C					
Room 8	9" x 9 " Gray Floor Tile	900 ft ²	G					
	Black Floor Tile Mastic	900 ft ²	C					
Room 9	9" x 9 " Gray Floor Tile	900 ft ²	MD (2 ft ²)					
	Black Floor Tile Mastic	900 ft ²	C					
Attic in Janitor Closet	Pipe Fitting Insulation	7 Units	G					
	Canvas Covering on Duct Insulation	160 ft ²	G					
Lobby	9" x 9 " Tan Floor Tile	780 ft ²	MD (20 ft ²)					
	Black Floor Tile Mastic	780 ft ²	C					
Main Office	9" x 9 " Gray Floor Tile	300 ft ²	G					
	Black Floor Tile Mastic	300 ft ²	C					
Nurse Office	9" x 9 " Gray Floor Tile	272 ft ²	MD (4 ft ²)					
	Black Floor Tile Mastic	272 ft ²	C					
Principal Office	9" x 9 " Gray Floor Tile	120 ft ²	G					
	Black Floor Tile Mastic	120 ft ²	C					
	Cementitious Panel under Windows	27 ft ²	G					

AHERA Six-Month Surveillance Inspection Date: _____

(Print Name): _____

Signature: _____

Hatherly Elementary School-72 Ann Vinal Road

Location	ACBM Description	Estimated Quantity	April 2021 Cond.	Oct. 2021 Cond.	April 2022 Cond.	Oct. 2022 Cond.	April 2023 Cond.	Oct. 2023 Cond.
<i>First Floor</i>								
Rainbow Room (21A)	9" x 9 " Gray Floor Tile	240 ft ²	MD (2 ft ²)					
	Black Floor Tile Mastic	240 ft ²	C					
Main Hallway	9" x 9 " Tan Floor Tile	1472 ft ²	G					
	Black Floor Tile Mastic	1472 ft ²	C					
Room 10	9" x 9 " Gray Floor Tile	1026 ft ²	G					
	Black Floor Tile Mastic	1026 ft ²	G					
	Cementitious Panel under Windows	90 ft ²	G					
Room 10 Storage	9" x 9 " Brown Floor Tile	112 ft ²	G					
	Black Floor Tile Mastic	112 ft ²	G					
	Pipe Fitting Insulation	25 Units	MD (2)					
Room 10 Boys and Girls Rooms	Pipe Fitting Insulation	4 Units	G					
Room 11	9" x 9 " Gray Floor Tile	1026 ft ²	G					
	Black Floor Tile Mastic	1026 ft ²	G					
	Cementitious Panel under Windows	90 ft ²	G					
Hallway by Room 11	9" x 9 " Tan Floor Tile	900 ft ²	G					
	Black Floor Tile Mastic	900 ft ²	C					
Art Room	9" x 9 " Gray Floor Tile	900 ft ²	G					
	Black Floor Tile Mastic	900 ft ²	C					
	Cementitious Panel under Windows	102 ft ²	G					
Teachers Room	12" x 12" Teal Floor Tile	450 ft ²	G					
	9" x 9 " Color Floor Tile (Assumed Under 12")	450 ft ²	C					
	Black Floor Tile Mastic	450 ft ²	C					
	Cementitious Panel under Windows	36 ft ²	G					
Teachers Room Closet	Pipe Fitting Insulation	6 Units	G					
	Canvas Covering on Duct Insulation	32 ft ²	G					

AHERA Six-Month Surveillance Inspection Date: _____

(Print Name): _____

Signature: _____

Hatherly Elementary School-72 Ann Vinal Road

Location	ACBM Description	Estimated Quantity	April 2021 Cond.	Oct. 2021 Cond.	April 2022 Cond.	Oct. 2022 Cond.	April 2023 Cond.	Oct. 2023 Cond.
<i>First Floor</i>								
Room 12	9" x 9 " Tan Floor Tile	1,064 ft ²	MD (20 ft ²)					
	Black Floor Tile Mastic	1,064 ft ²	C					
Janitor Closet by Gym	Pipe Fitting Insulation	2 Units	G					
Room 13	9" x 9 " Gray Floor Tile	900 ft ²	MD (2 ft ²)					
	Black Floor Tile Mastic	900 ft ²	C					
Room 14	9" x 9 " Gray Floor Tile	900 ft ²	MD (2 ft ²)					
	Black Floor Tile Mastic	900 ft ²	C					
Room 15	9" x 9 " Gray Floor Tile	900 ft ²	MD (2 ft ²)					
	Black Floor Tile Mastic	900 ft ²	C					
Room 16	9" x 9 " Tan Floor Tile	900 ft ²	MD (2 ft ²)					
	Black Floor Tile Mastic	900 ft ²	C					
Room 17	Black Floor Tile Mastic (Under 12" Tile)	900 ft ²	C					
Room 18	9" x 9 " Gray Floor Tile	900 ft ²	MD (32 ft ²)					
	Black Floor Tile Mastic	900 ft ²	C					
Room 19	Black Floor Tile Mastic (Under 12" Tile)	900 ft ²	C					
Room 20	9" x 9 " Gray Floor Tile	900 ft ²	MD (2 ft ²)					
	Black Floor Tile Mastic	900 ft ²	C					
Gymnasium	9" x 9 " Tan Floor Tile	3,000 ft ²	G					
	Black Floor Tile Mastic	3,000 ft ²	C					
P.E. Office	Pipe Fitting Insulation	16 Units	G					
Pipe Tunnels/Crawl Space	Pipe Fitting Insulation	400 Units	NA					

Notes:

ft² = Square Foot

lf = Linear Foot

Unit = Each

Y= Yes

N = No

Cond. = Condition

G = Good

MD = Minor Damage

D = Damaged

Fri. = Friable

U = Unknown

C = Covered

M = Miscellaneous

S= Surfacing

TSI = Thermal System Insulation

NA = Not Accessible

TRAINING RECORDS

00 4/21/21



Two-Hour Asbestos Awareness Training Attendance Sheet

Instructor: Jason Mohre (The VERTEX Companies, Inc.)

Printed Name	Date	Time In	Time Out	Signature
DAVE RAHUEL	4/21	9:00	11:00	
Jaime Oliver	4/21	9:00	11:00	
Justin Whyte	4/21	9:00	11:00	
Sandy Mancini	4/21	9:00	11:00	
Dominic Sacchi ^{Sacchi talks}	4/21	8:52	11:00	
Edna Borelli	4/21	8:52	11:00	
L Sacchi talks	4/21	8:53	11:00	
Tony Schiano	4/21	9:00	11:00	
Robert Dillo	4/21	9:00	11:00	
Brian Reid	4/21	9:00	11:00	
BEARCE	4-21	9:00	11:00	
T Whitlock	4-21	9:00	11:00	
McCarthy K.	4/21	9:00	11:00	
Gerald Duffi	4/21	9:00	11:00	



4/21/21



Two-Hour Asbestos Awareness Training Attendance Sheet

Instructor: Jason Mohre (The VERTEX Companies, Inc.)

Printed Name	Date	Time In	Time Out	Signature
Corrie Bartlett	4/21	12:00	2:00	Corrie Bartlett
JAIME Rykows	"	"	2	Jaime Rykows
Steve Bonetti	"	"	2	Steve Bonetti
William Connor	"	"	2	William Connor
Joseph Connolly	"	"	out	Joe Connolly
Bob Stafford	4/21	12:00	2:00	Bob Stafford
Ailton GABRIEL DOS SANTOS	4/21	12:00	2:00	Ailton Gabriel dos Santos
Trevor Tubridy	4/21	12:00	2:00	Trevor Tubridy
FLEDISON DOS SANTOS	4-21	12:00	2:00	F. Santos
Donna Street	4.21	12:00	2:00	D. Street



PLAN TO INFORM

Under 40 CFR ' 763.93(g)(4), at least once each school year, the LEA must notify in writing parent, teacher, and employee organizations of the availability of the Asbestos Management Plan (AMP) and must include in the AMP, a description of the steps taken to notify such organizations, and a dated copy of the notification. In the absence of any such organizations for parents, teachers, or employees, the LEA must provide written notice to that relevant group of the availability of the AMP and must include in the AMP a description of the steps taken to notify such groups, and a dated copy of the notification.

Under 40 CFR ' 763.93(e)(10), the AMP must include a description of the steps taken to inform workers and building occupants, or their legal guardians, about inspections, re-inspections, response actions, and post-response action activities, including periodic reinspection and surveillance activities that are planned or in progress. Under 40 CFR ' 763.84(c), the LEA must inform them about these activities at least once each school year.

Tips for Superintendents – Sample Annual Written Notification

SAMPLE: Schools may adapt or expand this sample template in order to comply with minimum requirements to provide annual notification to staff and guardians. Keep a dated copy in each school's Management Plan. For more assistance with AHERA compliance, visit www.mass.gov/dols/ahera

INSERT YOUR LETTERHEAD

ANNUAL ASBESTOS NOTIFICATION LETTER

For School Year 2013-2014

Date: September 20##

Dear Staff, Guardians and Students:

A copy of our district's Asbestos Management Plan is available in each school and at the main administrative office during regular school hours.

The district continues to update and improve the AHERA Asbestos Management Plans. Any inquiries regarding the management of asbestos-containing materials in our schools should be directed to our district's AHERA Designated Person, __ (name) __ who can be reached at __ (work location) __, and __ (email)____ and __ (phone)____.

Guidance for Superintendents – Sample Template for Notification to Contractors and Short-Term Workers about Asbestos

Background:

Schools must notify contractors and short-term workers who perform work in the building about the presence of asbestos-containing materials in the vicinity of their work area. The intent is twofold: 1) material should not be accidentally disturbed which could result in occupant exposure or building contamination; and 2) if work will disturb the material, the contractor must use trained, licensed workers and use work practices to prevent occupant exposure and building contamination.

The school may decide the most efficient and effective method for notification. Some schools elect to notify contractors when contracts are awarded. Some schools use a “log-in book” to confirm that all employees of the contractor visiting the school on that particular day are notified about the presence of asbestos-containing materials in the building.

Contractors include electricians, plumbing and heating, HVAC, flooring, and Information Technology. For example, before an IT vendor installs wiring above a suspended ceiling, the school’s Asbestos Management Plan should be referenced to determine if the ceiling tiles contain asbestos, and determine if there is spray-on insulation or textured plaster above the ceiling which contain asbestos. Dust control work practices, and worker asbestos training, must be used if asbestos-containing materials will be disturbed. At the completion of work, the area may require O&M cleaning with wet methods or HEPA vacuums.

INSERT YOUR LETTERHEAD

NOTICE TO CONTRACTORS

This notice must be signed by all contractors and vendors conducting work in the schools. The original copy will be maintained in the school office. Each contractor must sign into the school Visitor's Log and complete a copy of this Notice.

To: All contractors who perform work in the ____XX____ School

Date: September 2013

From: _____

RE: Presence of Asbestos-Containing-Materials in the XX School

Your work in the _____ School may disturb Asbestos-Containing Materials.

Locations of Asbestos-Containing Materials:

A diagram of known and presumed asbestos-containing materials is attached to this notice.

Materials include: *(list materials in your school)*

Ceiling tiles

Floor tiles – all 9x9 and 12x12 tile

Boiler insulation

Pipe elbow insulation

Spray-on textured ceiling

Disturbing Asbestos-Containing Materials and Presumed Asbestos-Containing Materials:

- If you suspect a material may contain asbestos, contact the district Designated Person, ____ (name) ____ at 617-###-#### before disturbing it.
- Personnel must be trained and authorized to disturb asbestos-containing materials.
- Personnel must follow Operations and Maintenance procedures to ensure that school occupants are not exposed to asbestos dust, and ensure that asbestos dust does not contaminate building areas. A licensed Asbestos Contractor is required when more than 3 square feet or 3 linear feet is disturbed.

Labels are located on asbestos-containing materials located in non-public mechanical areas. The lack of a label does not demonstrate that the material does not contain asbestos.

Please sign below and return this document to the school receptionist as agreement that you have been notified of the presence of asbestos-containing materials, and your acceptance that you will not disturb suspect asbestos-containing materials.

Printed name: _____ Signature: _____

Company: _____ Date: _____